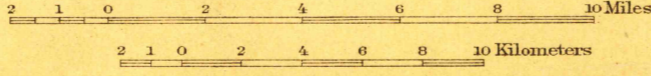
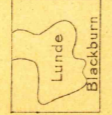




U.S.G.S.
FILE COPY

U.S.G.S.
FILE COPY

R. B. Marshall, Chief Geographer.
T. G. Gardine, Geographer in charge.
Topography by J. E. Blackburn and S. G. Lunde.
Control by Coast and Geodetic Survey, C. F. Urquhart and L. F. Biggs.
Surveyed in 1909-1910.



Contour interval 100 feet.
Datum is mean sea level.

Edition of June 1912.

JUN 29 1912 3589

USGS
Historical File
Topographic Division

IVANPAH