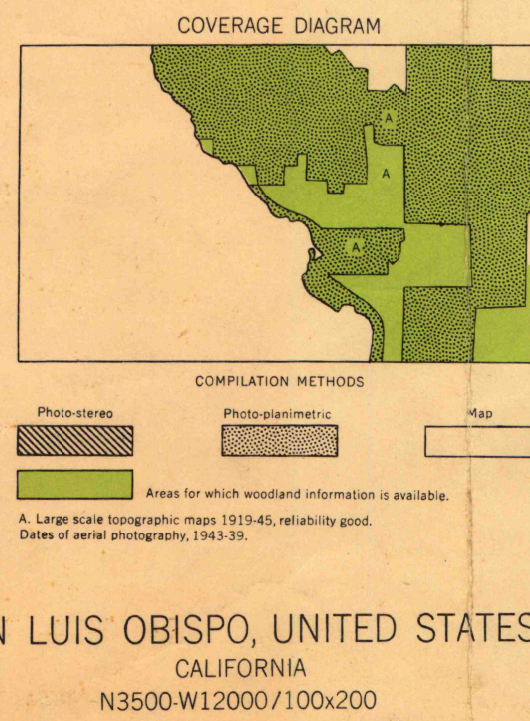
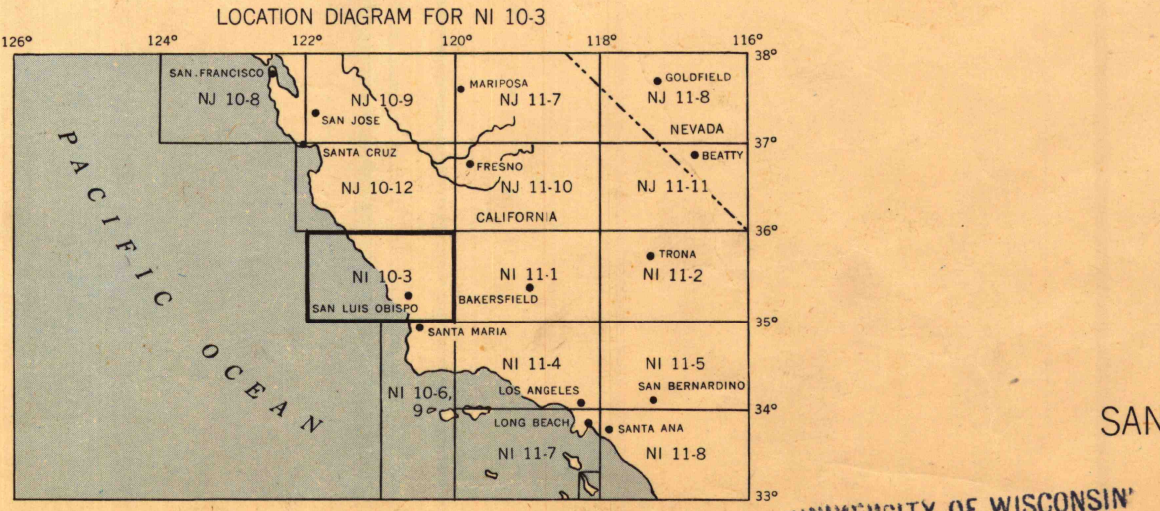
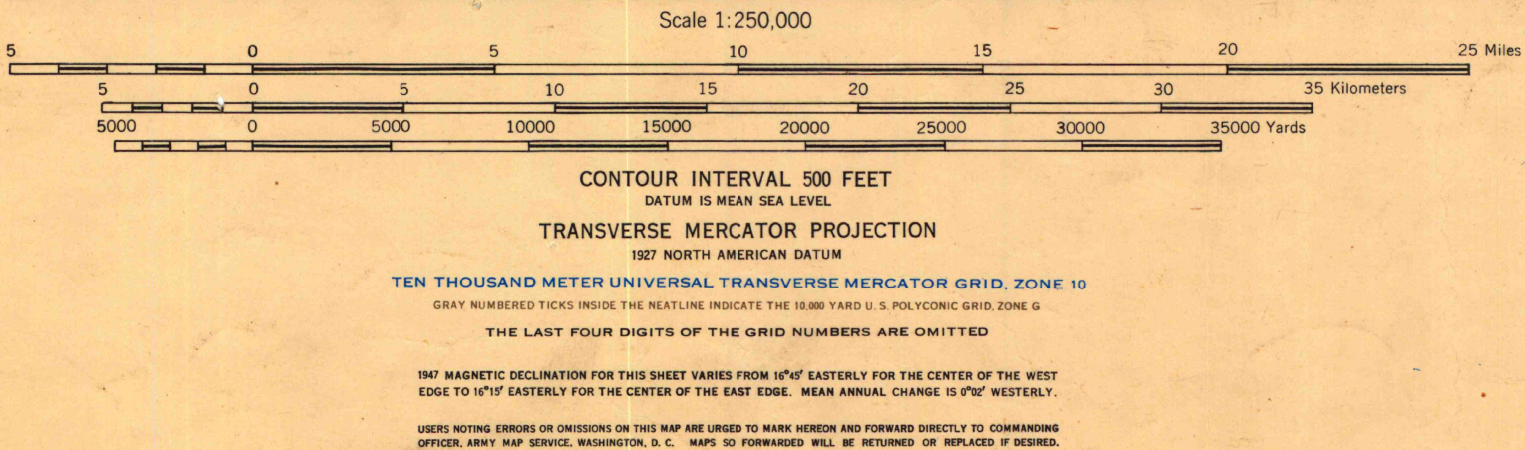
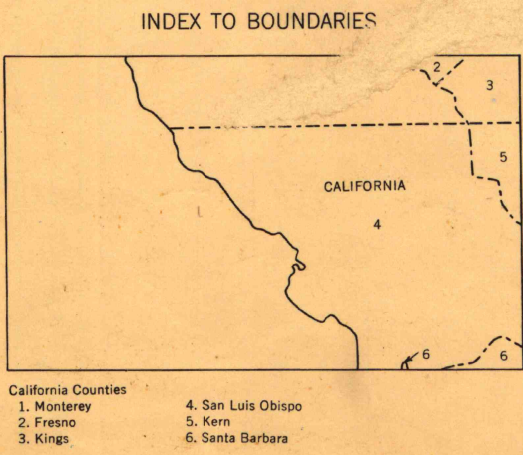
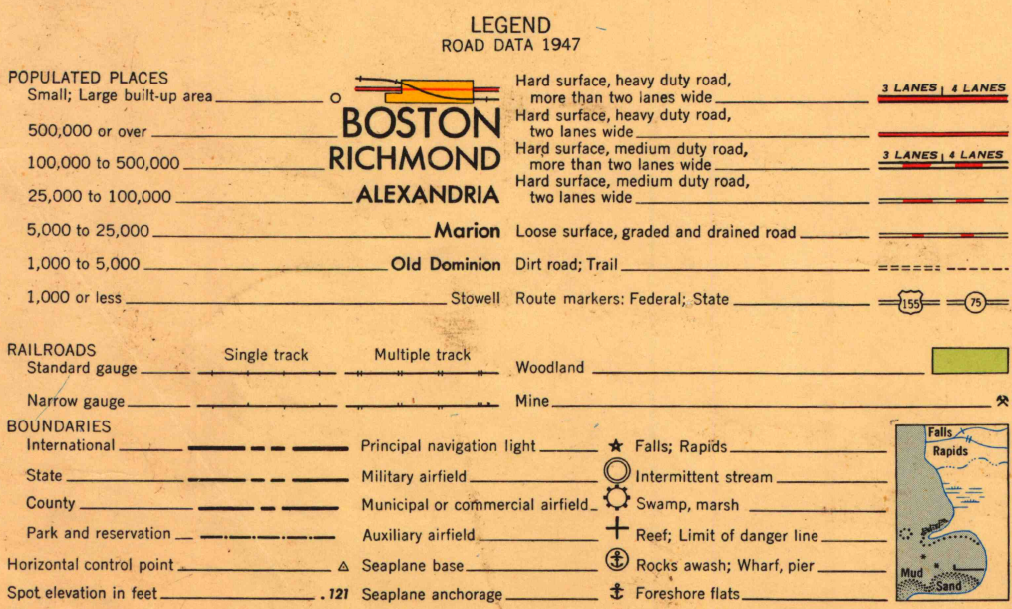




A.M.S. V502

AMS 1, 1947

Prepared under the direction of the Chief of Engineers by the Army Map Service (AM), Corps of Engineers, Department of the Army, Washington, D. C. Compiled in 1947 from United States Quadrangles, 1:31,680, 1:50,000, 1:62,500, Corps of Engineers and U. S. Geological Survey, 1919-1945; County Highway Maps, 1941; and Intelligence Data to 1946. Planimetric detail partially revised by photogrammetric methods. Aerial photography 1939-1943. Road and railroad data verified by state authorities 1947. Control by U. S. Coast and Geodetic Survey.



SAN LUIS OBISPO, UNITED STATES
CALIFORNIA
N3500-W12000/100x200

UNIVERSITY OF WISCONSIN
Department of Geography