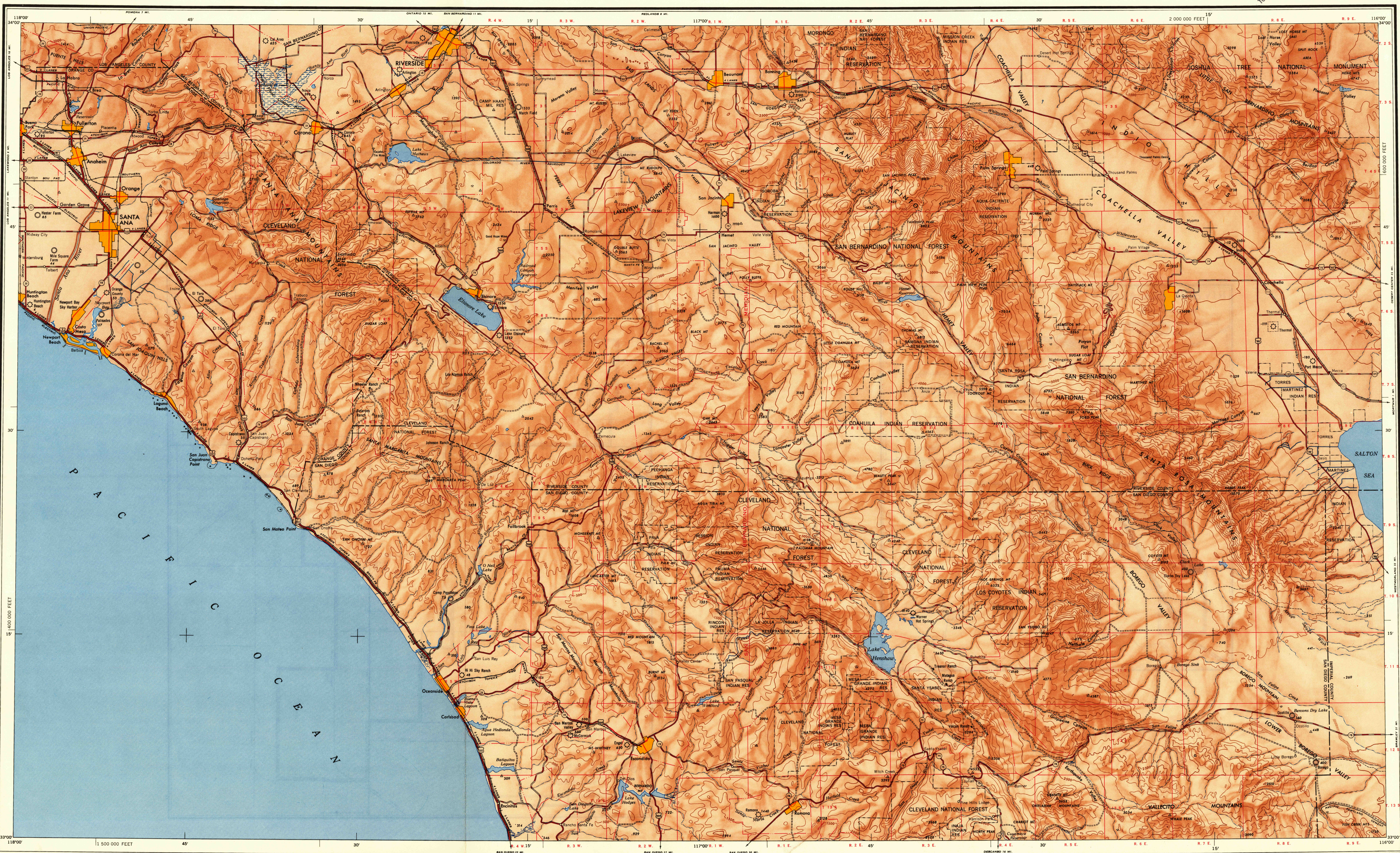


U.S.G.S.  
FILE COPY  
TOPOGRAPHIC DIVISION



V502

Prepared under the direction of the Chief of Engineers by the Army Map Service (AM), Corps of Engineers, Department of the Army, Washington, D. C. Compiled in 1947 from United States Quadrangles, 1:62,500. Corps of Engineers, 1941-43. County Highway Maps, 1941. U.S. Coast and Geodetic Survey maps, Nos. 5101, 5108, 1939-40. Planimetric details partially revised by photogrammetric methods. Aerial photography 1938-44. Road and railroad data verified by state authorities, 1947. Control by U. S. Coast and Geodetic Survey. Marginal data and Universal Transverse Mercator Grid values revised, 1955.

**LEGEND**

**ROAD DATA 1953**  
 More than two lanes wide, heavy duty road  
 More than two lanes wide, hard surface, heavy duty road  
 Two lanes wide, hard surface, medium duty road  
 More than two lanes wide, hard surface, medium duty road  
 Two lanes wide, hard surface, medium duty road

**Marion** Loose surface, graded and drained road  
**Old Dominion** Dirt road; Trail  
 1,000 or less Stowell Route markers: Federal; State

**RAILROADS**  
 Standard gauge Single track Multiple track  
 Narrow gauge Interlocking Mine

**BOUNDARIES**  
 International Principal navigation light Falls; Rapids  
 State Military airfield Intermittent stream  
 County Municipal or commercial airfield Swam; marsh  
 Park and reservation Auxiliary airfield Reef; Limit of danger line  
 Horizontal control point Seaplane base Rocks awash; Wharf, pier  
 Spot elevation in feet Seaplane anchorage Foreshore flats

Scale 1:250,000

0 5 10 15 20 25 30 35 Miles  
 0 5000 10000 15000 20000 25000 30000 35000 Yards

0 5 10 15 20 25 30 35 Kilometers

CONTOUR INTERVAL 500 FEET  
 DATUM IS MEAN SEA LEVEL

TRANSVERSE MERCATOR PROJECTION  
 1927 NORTH AMERICAN DATUM

100,000 FOOT GRIDS BASED ON CALIFORNIA COORDINATE SYSTEM, ZONE 6

1955 MAGNETIC DECLINATION FOR THIS SHEET VARIES FROM 15°00' EASTERLY FOR THE CENTER OF THE WEST EDGE TO 14°30' EASTERLY FOR THE CENTER OF THE EAST EDGE. MEAN ANNUAL CHANGE IS 0°02' WESTERLY.

LOCATION DIAGRAM FOR NI 118

COVERED BY THIS SHEET

COVERED BY OTHER SHEETS

COMPILED BY PHOTOGRAMMETRY

COMPILED BY PHOTOGRAMMETRY

SECTIONIZED TOWNSHIP

6	5	4	3	2	1
7	8	9	10	11	12
13	14	15	16	17	18
19	20	21	22	23	24
25	26	27	28	29	30
31	32	33	34	35	36

U.S.G.S.  
FILE COPY  
TOPOGRAPHIC DIVISION  
Historical File  
Topographic Division

PRINTED BY ARMY MAP SERVICE, CORPS OF ENGINEERS, 4-56, 91261-067

TOWNSHIP OR RANGE LINE  
LAND GRANT BOUNDARY

FOR SALE BY U. S. GEOLOGICAL SURVEY, FEDERAL CENTER, DENVER, COLORADO OR WASHINGTON 25, D. C.

SANTA ANA, CALIFORNIA  
MAY 28 1956 (4560)  
Printed by A.M.S. for G.S.