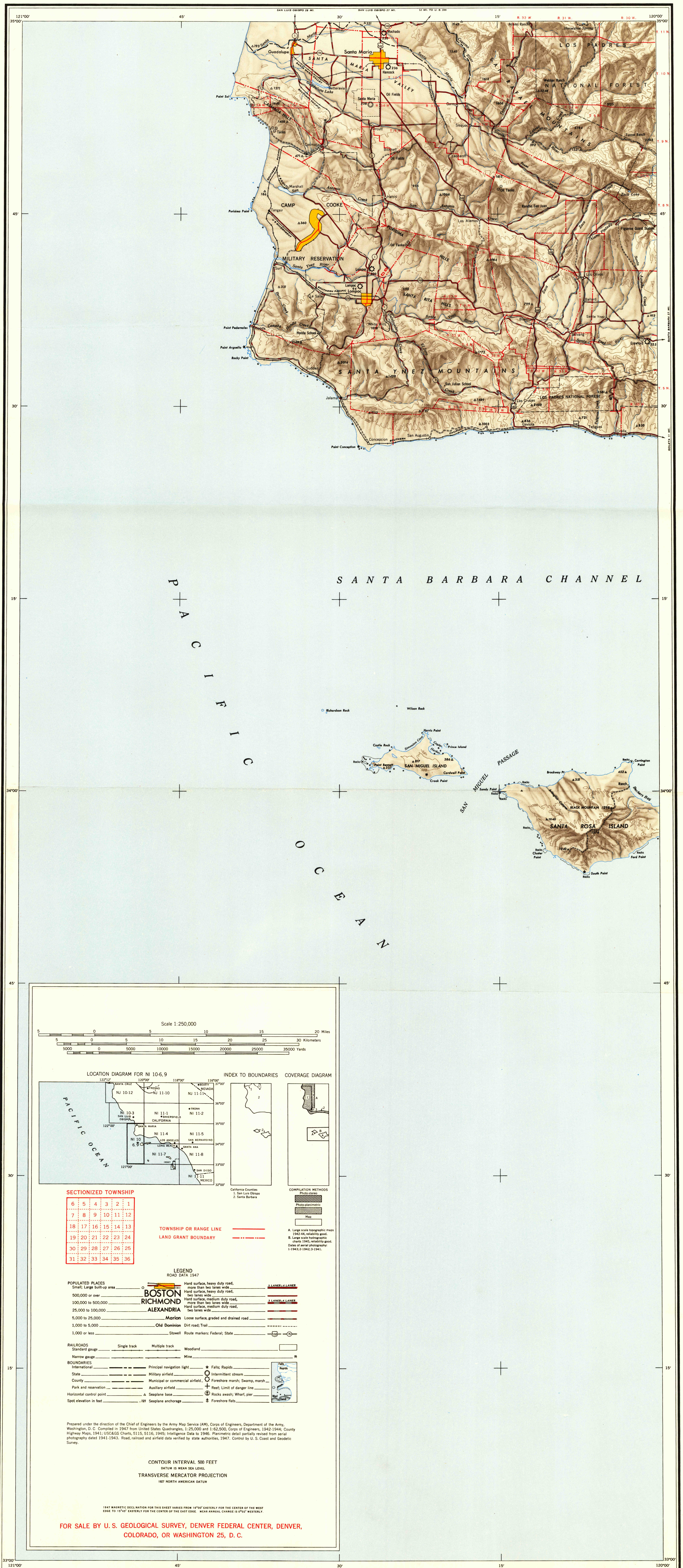


USGS
Historical
Topographic

DS
al File
Division

DS
COPY
Division

DS
FILE
Division



Scale 1:250,000

5 10 15 20 Miles
5 10 15 20 25 Kilometers
5000 10000 15000 20000 25000 Yards

LOCATION DIAGRAM FOR NI 10-6, 9

INDEX TO BOUNDARIES

COVERAGE DIAGRAM

PACIFIC OCEAN

SECTIONIZED TOWNSHIP

6	5	4	3	2	1
7	8	9	10	11	12
13	14	15	16	17	18
19	20	21	22	23	24
25	26	27	28	29	30
31	32	33	34	35	36

TOWNSHIP OR RANGE LINE

LAND GRANT BOUNDARY

LEGEND

ROAD DATA 1947

POPULATED PLACES

Small: Large built-up area

500,000 or over

100,000 to 500,000

25,000 to 100,000

5,000 to 25,000

1,000 to 5,000

1,000 or less

Hard surface, heavy duty road, more than two lanes wide

Hard surface, heavy duty road, two lanes wide

Hard surface, medium duty road, more than two lanes wide

Hard surface, medium duty road, two lanes wide

Loose surface, graded and drained road

Old Dominion Div road, Trail

Stowell

Route markers: Federal; State

RAILROADS

Standard gauge

Narrow gauge

Single track

Multiple track

Woodland

Mine

BOUNDARIES

International

State

County

Park and reservation

Horizontal control point

Spot elevation in feet

Principal navigation light

Military airfield

Municipal or commercial airfield

Auxiliary airfield

A. Seaplane base

B. Seaplane anchorage

Falls; Rapids

Intermittent stream

Foreshore marsh; Swamp, marsh

Rest; Limit of danger line

Rocks awash; Wharf, pier

Foreshore flats

Prepared under the direction of the Chief of Engineers by the Army Map Service (AMS), Corps of Engineers, Department of the Army, Washington, D. C. Compiled in 1947 from United States Quadrangles, 1:250,000 and 1:62,500, Corps of Engineers, 1942-1946; County Highway Maps, 1941; USCGS Charts, 5115, 5116, 1945; Intelligence Data to 1946. Planimetric detail partially revised from aerial photography dated 1941-1943. Road, railroad and airfield data verified by state authorities, 1947. Control by U. S. Coast and Geodetic Survey.

CONTOUR INTERVAL 500 FEET

DATUM IS MEAN SEA LEVEL

TRANSVERSE MERCATOR PROJECTION

1827 NORTH AMERICAN DATUM

1947 MAGNETIC DECLINATION FOR THIS SHEET VARIES FROM 15°00' WESTERLY FOR THE CENTER OF THE SHEET TO 15°45' EASTERLY FOR THE CENTER OF THE EAST EDGE. MEAN ANNUAL CHANGE IS 0°00' WESTERLY.

FOR SALE BY U. S. GEOLOGICAL SURVEY, DENVER FEDERAL CENTER, DENVER, COLORADO, OR WASHINGTON 25, D. C.

DS
FILE
Division