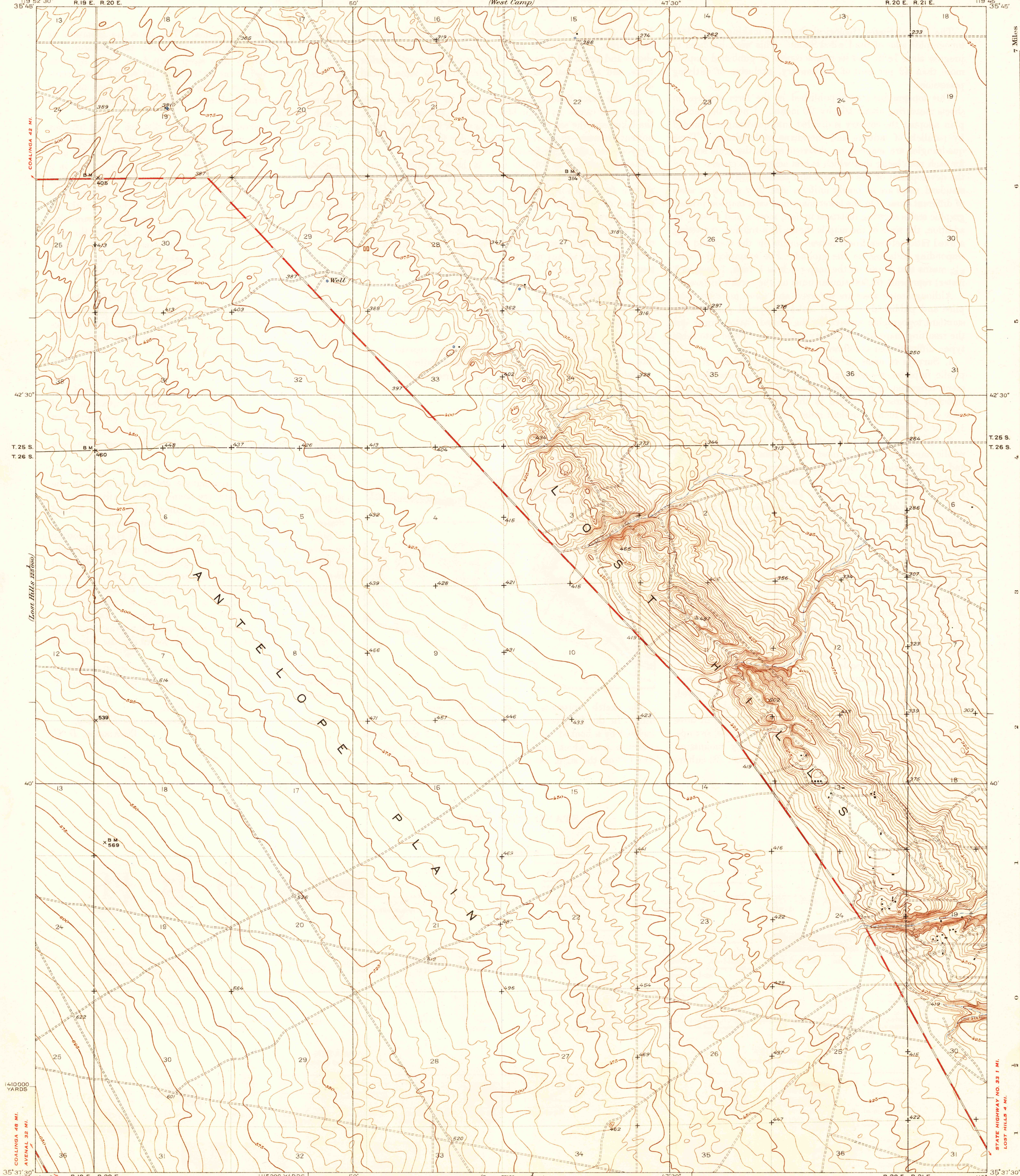


U. S. G. S.  
FILE COPY  
Inspection and Editing

DEPARTMENT OF THE INTERIOR  
U. S. GEOLOGICAL SURVEY

STATE OF CALIFORNIA  
FRANK F. MERRIAM, GOVERNOR  
EARL LEE KELLY, DIRECTOR OF PUBLIC WORKS  
EDWARD HYATT, STATE ENGINEER  
(West Camp)

CALIFORNIA  
(KERN COUNTY)  
ANTELOPE PLAIN QUADRANGLE  
R. 20 E. R. 21 E.



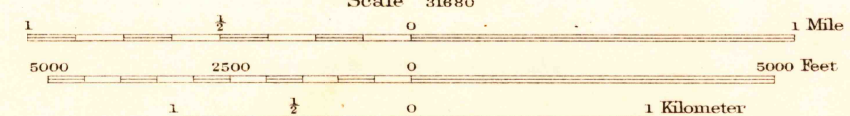
Vertical text on the left margin: (General Copy), COALINGA 42 MI., T. 25 S., T. 26 S., (Lost Hills 125000), COALINGA 48 MI., AVALON 32 MI., 1410000 YARDS, (Lost Hills 125000), 1115000 YARDS, 50', 47' 30", 119° 52' 30", R. 19 E. R. 20 E., 35° 37' 30"

Vertical text on the right margin: 7 Miles, T. 25 S., T. 26 S., 40', STATE HIGHWAY NO. 33 1 MI., LOST HILLS 4 MI., (Lost Hills 125000), R. 20 E. R. 21 E., 119° 45', 35° 37' 30"

Topography by S.C. Kain  
Control by U.S. Geological Survey  
Surveyed in 1932

LOST HILLS 11 MI.  
FAMOSO 38 MI.

TRUE NORTH  
MAGNETIC NORTH  
APPROXIMATE MEAN  
DECLINATION, 1932



Contour interval 5 feet  
Datum is mean sea level

USGS  
Historical File  
Topographic Division

Polyconic projection; North American datum  
5000 yard grid based upon U. S. zone system, G  
HARD IMPERVIOUSLY SURFACED ROADS  
OTHER MAIN TRAVELED ROADS  
1935

ANTELOPE PLAIN, CALIF.  
Edition of 1936

1652;0625; / 49

JUN 12 1936 (1905)

1905