

SAN LUIS OBISPO 88 MI.
MC KITTRICK 10.5 MI.

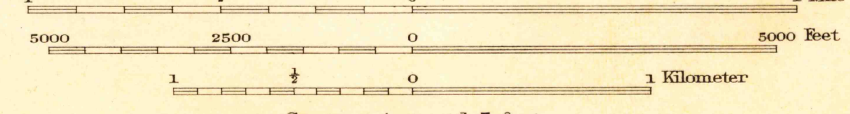
SHAFER 8.8 MI.
WASCO 17 MI.
RIO BRAVO 5 MI.
BAKERSFIELD 22 MI.

Topography by H.L. McDonald
Surveyed in 1928-1929

Goose Lake
West Elk Hills

R. 23 E. R. 24 E. (East Elk Hills)
Scale 1:31650

Polyconic projection, 1927 North American datum
5000 yard grid based upon U.S. zone system, G



ROUTES USUALLY TRAVELED
HARD IMPERVIOUS SURFACES
OTHER SURFACE IMPROVEMENTS
U. S. ROUTE 1943 STATE ROUTE

To join Goose Lake, Leonards, and Wasco
maps use dotted projection corners

Contour interval 5 feet.
Datum is mean sea level.

BUTTONWILLOW CALIF.
Edition of 1932
reprinted 1943

USGS
Historical File
Topographic Division

N3522.5-W11922.5/7.5

JUL 8 - 1943 2135