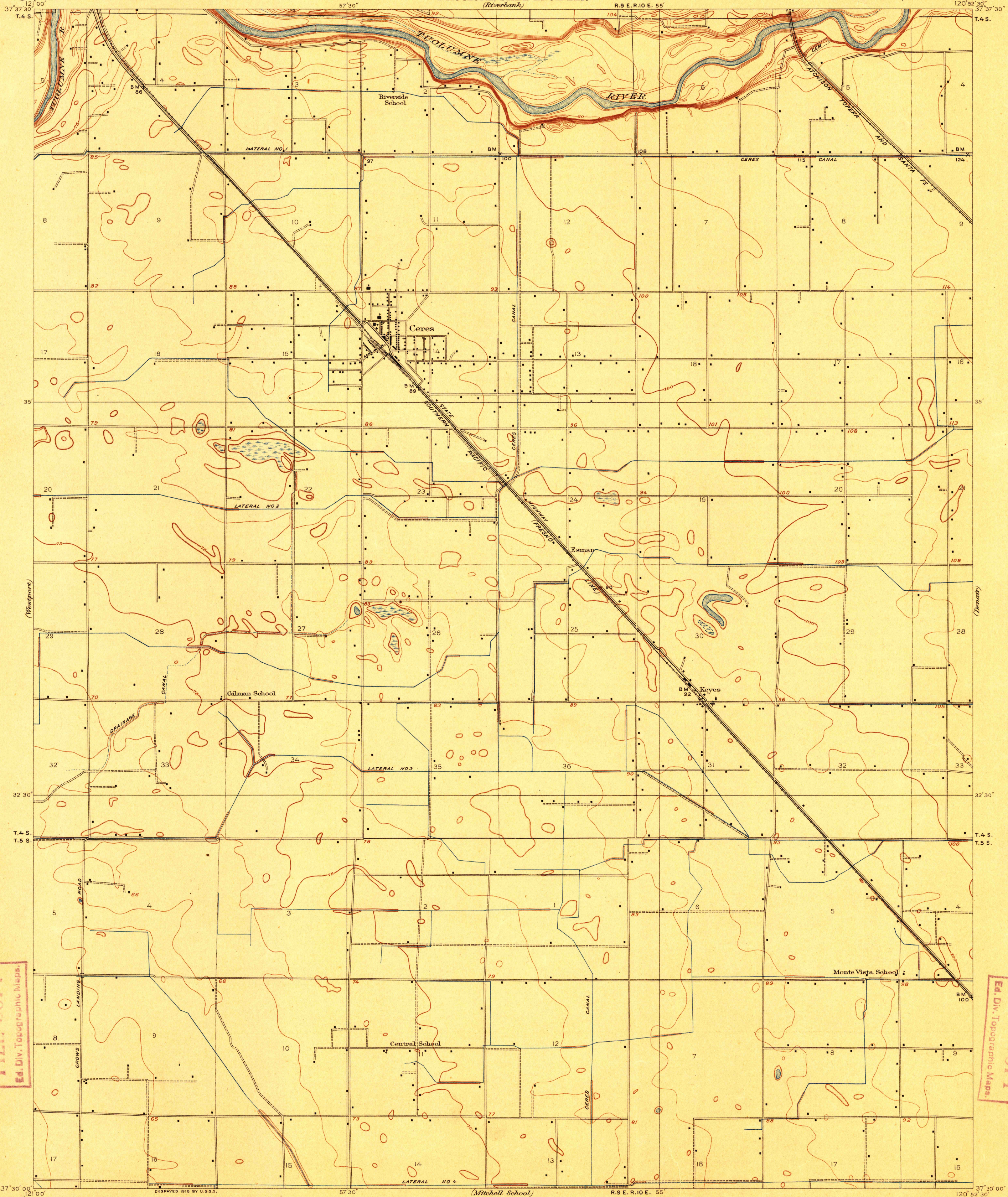


TOPOGRAPHY

DEPARTMENT OF THE INTERIOR
FRANKLIN K. LANE, SECRETARY
U.S. GEOLOGICAL SURVEY
GEORGE OTIS SMITH, DIRECTOR

STATE OF CALIFORNIA
HIRAM W. JOHNSON, GOVERNOR
W. F. MCCLURE, STATE ENGINEER
(Riverbank)

CALIFORNIA
(STANISLAUS COUNTY)
CERES QUADRANGLE

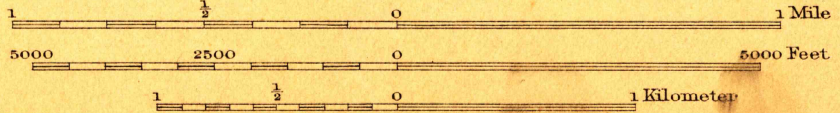


U.S.G.S.
FILE COPY
Ed. Div. Topographic Maps.

U.S.G.S.
FILE COPY
Ed. Div. Topographic Maps.

ENGRAVED 1916 BY U.S.G.S.
R. B. Marshall, Chief Geographer.
Geo. F. Davis, Geographer in charge.
Topography by F. A. Danforth and C. A. Stonesifer.
Control by C. F. Urquhart, C. H. Semper, and D. S. Birkett.
Surveyed in 1914.

Stonesifer
Danforth



Contour interval 5 feet.
Datum is mean sea level.

Edition of 1916.

DEC 20 1916 3425

CERES