

SAN LUIS OBISPO COUNTY, CALIFORNIA  
CHOLAME QUADRANGLE

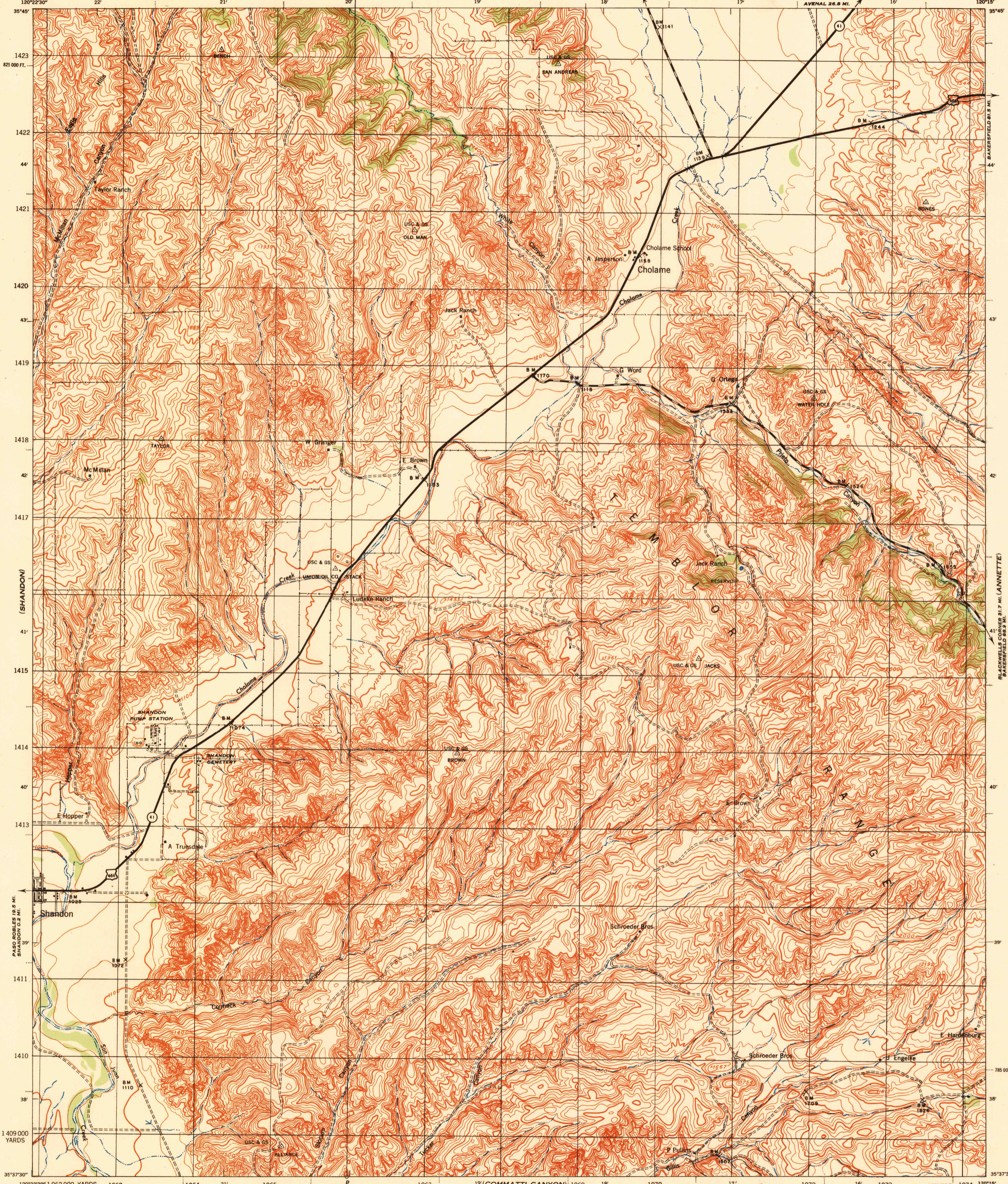
WAR DEPARTMENT  
CORPS OF ENGINEERS, U. S. ARMY

SAN LUIS OBISPO COUNTY, CALIFORNIA  
CHOLAME QUADRANGLE

GRID ZONE "G"

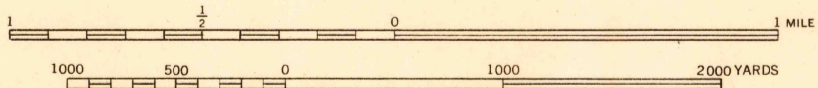
FIRST EDITION - AMS 1

GRID ZONE "G"



Prepared under the direction of the Chief of Engineers, U. S. Army, 1942.  
Compiled by Fairchild Aerial Surveys, Inc., Los Angeles, California.  
Topography by Fairchild Aerial Surveys, Inc., Los Angeles, California by stereophotogrammetric process.  
Control by U. S. Coast and Geodetic Survey and Fairchild Aerial Surveys, Inc.  
Aerial photography by Fairchild Aerial Surveys, Inc.  
Polyconic Projection, North American Datum 1927.

Scale 1:31,680



CONTOUR INTERVAL 25 FEET  
DATUM IS MEAN SEA LEVEL

ONE THOUSAND YARD GRID COMPUTED FROM GRID SYSTEM FOR PROGRESSIVE MAPS  
IN THE U. S. ZONE "G" U. S. C. & G. S. SPECIAL PUBLICATION NO. 89  
THE LAST THREE DIGITS OF THE GRID NUMBER ARE OMITTED  
CALIFORNIA STATE GRID ZONE "S" IS INDICATED BY DOTTED  
TICKS OUTSIDE THE NEAR LINE AT 5,000 FOOT INTERVALS  
NOTE: OFFICERS USING THIS MAP WILL MARK HEREON CORRECTIONS AND ADDITIONS WHICH COME  
TO THEIR ATTENTION AND MAIL DIRECT TO THE CHIEF OF ENGINEERS, WASHINGTON, D. C.

APPROXIMATE MEAN DECLINATION 1943  
FOR CENTER OF SHEET  
ANNUAL MAGNETIC CHANGE 1" DECREASE  
Use diagram only to obtain numerical values. To determine  
magnetic north line, connect the pivot point "P" on the  
north edge of the map with the value of the angle between  
GRID NORTH and MAGNETIC NORTH, as plotted on the  
degree scale at the north edge of the map.

ROAD CLASSIFICATION 1943  
Dependable hard surface, heavy-duty road. U. S. Route 160  
Loose surface graded, dry weather road. State Route 30  
Secondary, hard surface, all-weather road. Dirt Road  
More than two lanes indicated by note along road with tick at point of change. 3 LANE 4 LANE

CHOLAME, CALIF.  
N3537.5-W12015/7.5

USGS  
HISTORICAL FILE  
TOPOGRAPHIC DIVISION