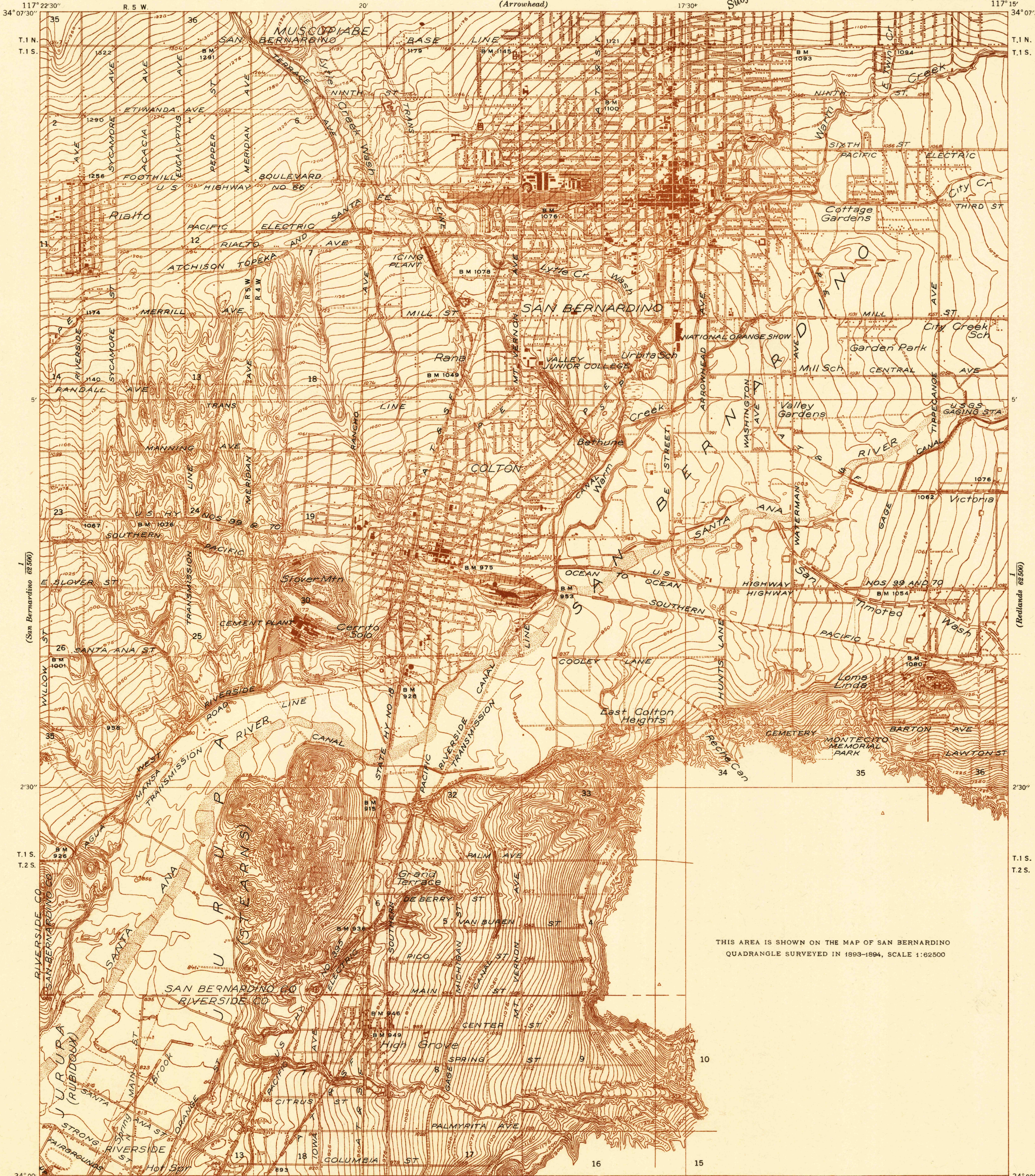


UNITED STATES
DEPARTMENT OF THE INTERIOR
GEOLOGICAL SURVEY

STATE OF CALIFORNIA
CULBERT L. OLSON, GOVERNOR
FRANK W. CLARK, DIRECTOR OF PUBLIC WORKS
EDWARD HYATT, STATE ENGINEER

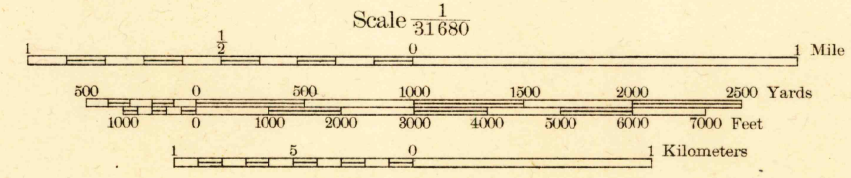
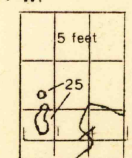
Unedited advance sheet
Subject to correction

CALIFORNIA
COLTON QUADRANGLE

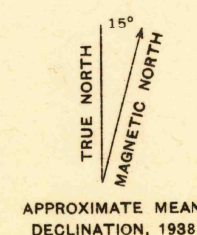


THIS AREA IS SHOWN ON THE MAP OF SAN BERNARDINO
QUADRANGLE SURVEYED IN 1893-1894, SCALE 1:62500

H. H. Hodgeson, Division Engineer
Topography by W. B. Upton, Jr.
Surveyed in 1936-1938



Contour intervals 5 and 25 feet (see diagram)
Datum is mean sea level



USGS
Historical File
Topographic Division

COLTON, CALIF.
N 3400 - W 11715 / 7.5