

UNITED STATES
DEPARTMENT OF THE INTERIOR
GEOLOGICAL SURVEY

STATE OF CALIFORNIA
EARL WARREN, GOVERNOR
FRANK W. CLARK, DIRECTOR OF PUBLIC WORKS
EDWARD HYATT, STATE ENGINEER

U. S. G. S.
FILE COPY
Inspection and Editing.

CALIFORNIA
COLTON QUADRANGLE
7 1/2-MINUTE SERIES

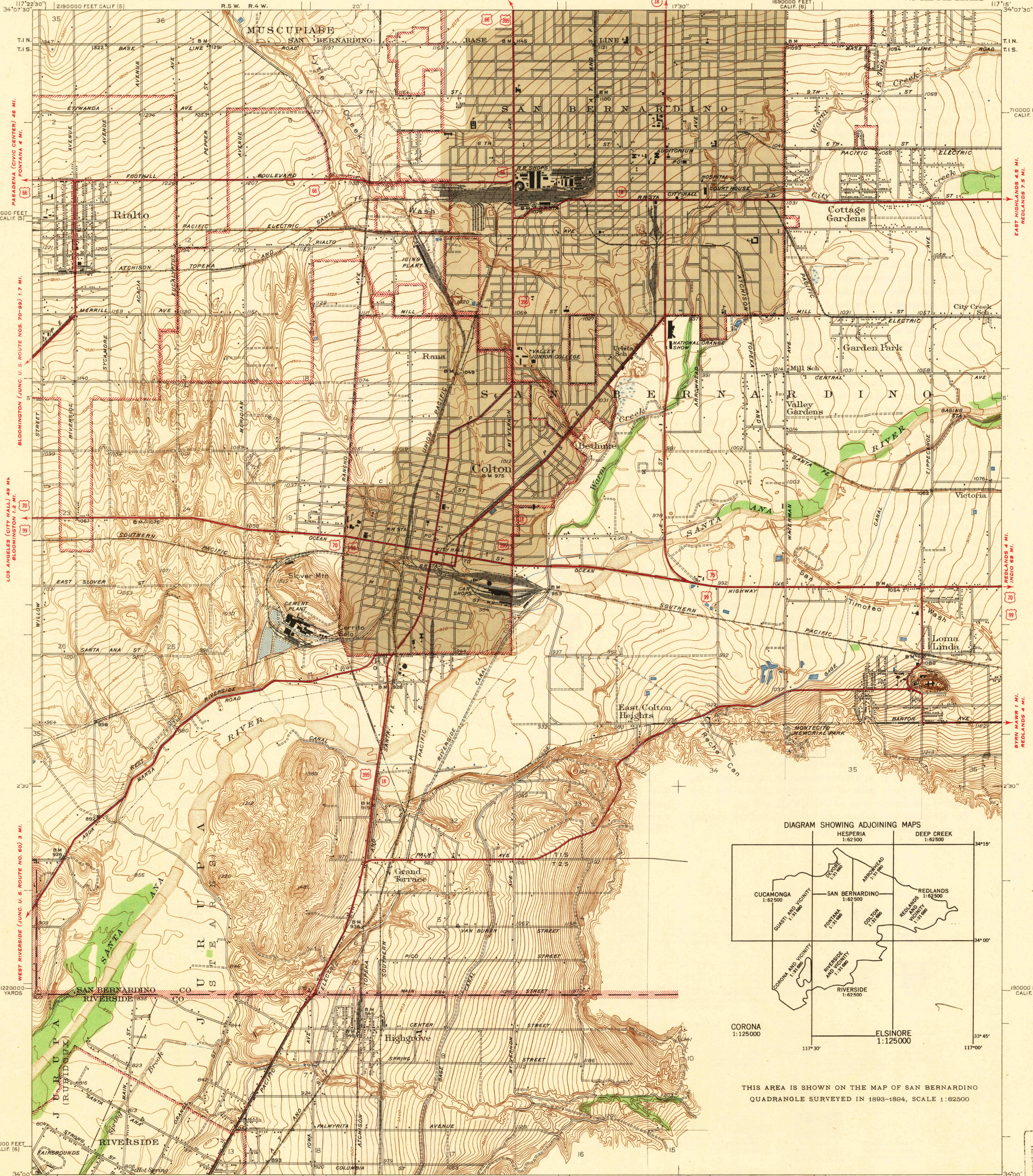
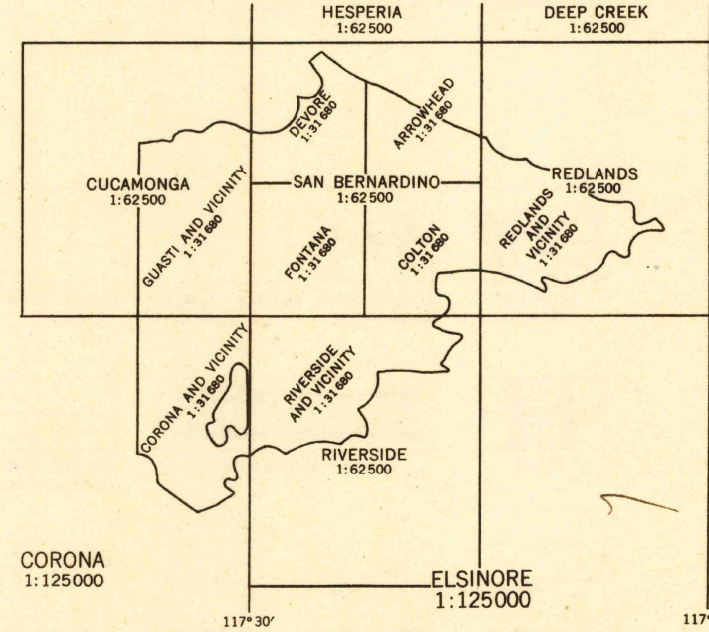


DIAGRAM SHOWING ADJOINING MAPS

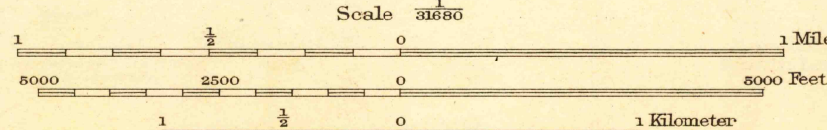


THIS AREA IS SHOWN ON THE MAP OF SAN BERNARDINO
QUADRANGLE SURVEYED IN 1893-1894, SCALE 1:62500

Topography by W.B. Upton, Jr.
Surveyed in 1936-1938
Gray tint indicates areas in which only
landmark buildings are shown

RIVERSIDE (CIVIC CENTER) 2 MI.
SAN DIEGO (CIVIC CENTER) 127 MI.

APPROXIMATE MEAN
DECLINATION, 1938



Contour intervals 5 and 25 feet (see diagram)
Datum is mean sea level

ROUTES USUALLY TRAVELED
HARD IMPROVED SURFACES
OTHER SURFACE IMPROVEMENTS
U. S. ROUTE
USGS
Historical File
Topographic Division

Polyconic projection, 1927 North American datum
5000 yard grid based on U.S. zone system, G
10000 foot grid based on California (5) and
California (6) rectangular coordinate systems

Name changed to San Bernardino South
COLTON, CALIF.
Edition of 1943

MAY 24 1948

N3400-W11715/7.5

U. S. G. S.
FILE COPY
Inspection and Editing.

3175