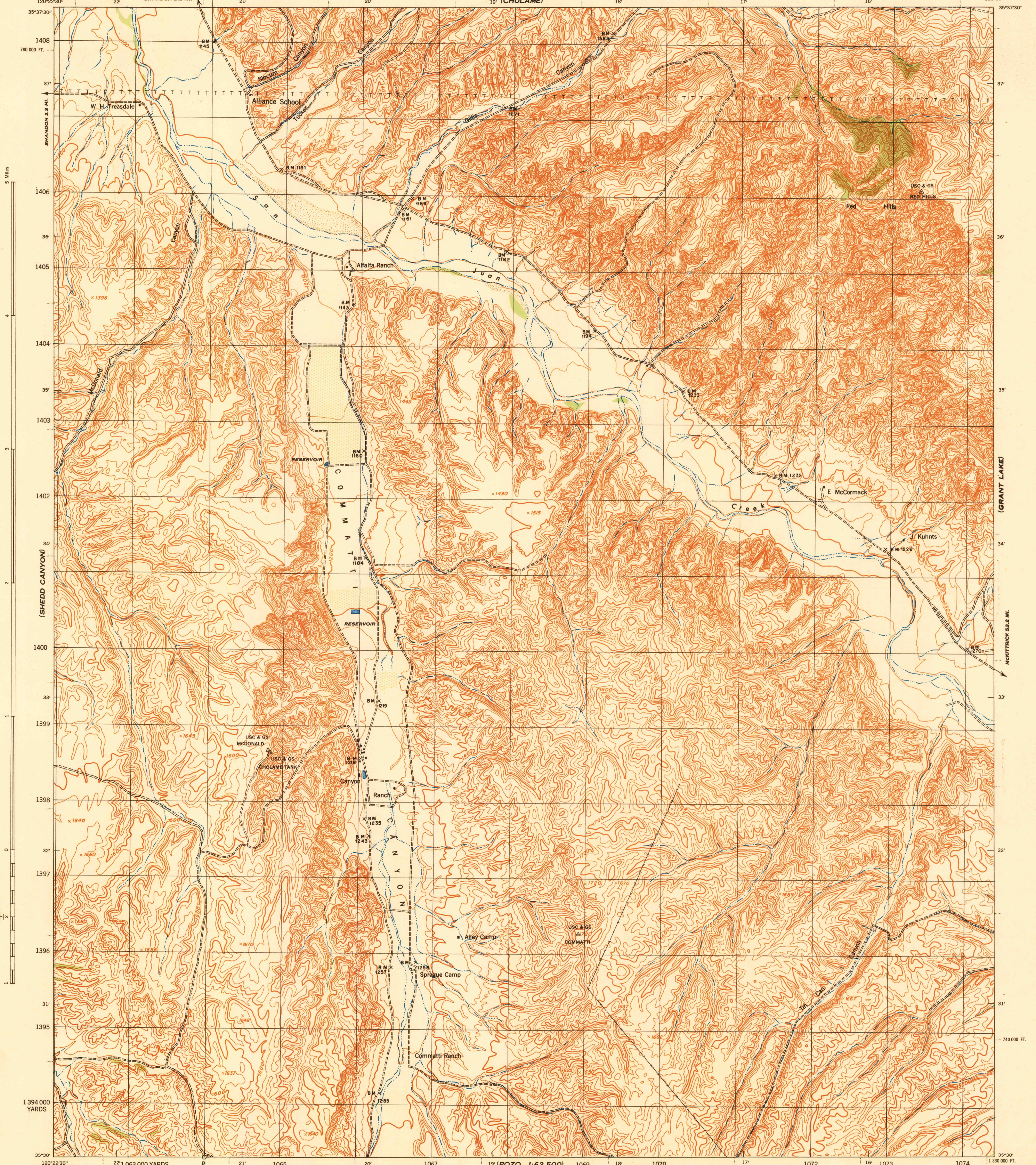


GRID ZONE "G"

FIRST EDITION - AMS 1

GRID ZONE "G"



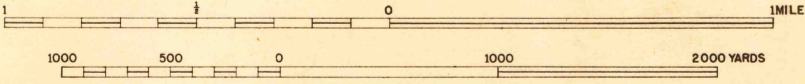
5 Miles

1 1/2 Miles

1 1/2 Miles

First Edition 1943  
Prepared under the direction of the Chief of Engineers, U. S. Army, 1942.  
Compiled by Fairchild Aerial Surveys, Inc., Los Angeles, California.  
Topography by Fairchild Aerial Surveys, Inc., Los Angeles, California,  
by stereophotogrammetric process.  
Control by U. S. Coast and Geodetic Survey  
and Fairchild Aerial Surveys, Inc.  
Aerial photography by Fairchild Aerial Surveys, Inc.  
Polyconic Projection, North American Datum 1927.

Scale 1:31,680



CONTOUR INTERVAL 25 FEET  
DATUM IS MEAN SEA LEVEL

ONE THOUSAND YARD GRID COMPUTED FROM "GRID SYSTEM FOR PROGRESSIVE MAPS  
IN THE U. S." ZONE "G", U. S. C. & G. S. SPECIAL PUBLICATION NO. 59  
THE LAST THREE DIGITS OF THE GRID NUMBERS ARE OMITTED  
CALIFORNIA STATE GRID ZONE "G" IS INDICATED BY DOTTED  
TICKER OUTSIDE THE HEAT LINE AT 1,000 FOOT INTERVALS  
NOTE: OFFICERS USING THIS MAP WILL MAKE NECESSARY CORRECTIONS AND ADJUSTMENTS WHICH COME  
TO THEIR ATTENTION AND MAIL DIRECT TO THE CHIEF OF ENGINEERS, WASHINGTON, D. C.

APPROXIMATE MEAN DECLINATION 1943  
FOR CENTER OF SHEET  
ANNUAL MAGNETIC CHANGE 1" DECREASE  
Use diagram only to obtain numerical values. To determine  
magnetic north line, connect the pivot point "P" on the  
south edge of the map with the value of the angle between  
GRID NORTH and MAGNETIC NORTH, as plotted on the  
degree scale of the north edge of the map.

ROAD CLASSIFICATION 1943  
Dependable hard surface, heavy-duty road. U. S. Route 160  
Loose surface grade, dry weather road.  
Secondary, hard surface, all-weather road. State Route 30  
Dirt Road  
More than two lanes indicated by note along road with tick at point of change. 3 LANE 4 LANE

COMMATTI CANYON, CALIF.  
N3530-W12015/7.5

USGS  
HISTORICAL FILE  
TOPOGRAPHIC DIVISION

NAME CHANGED TO CHOLAME (1:24000)