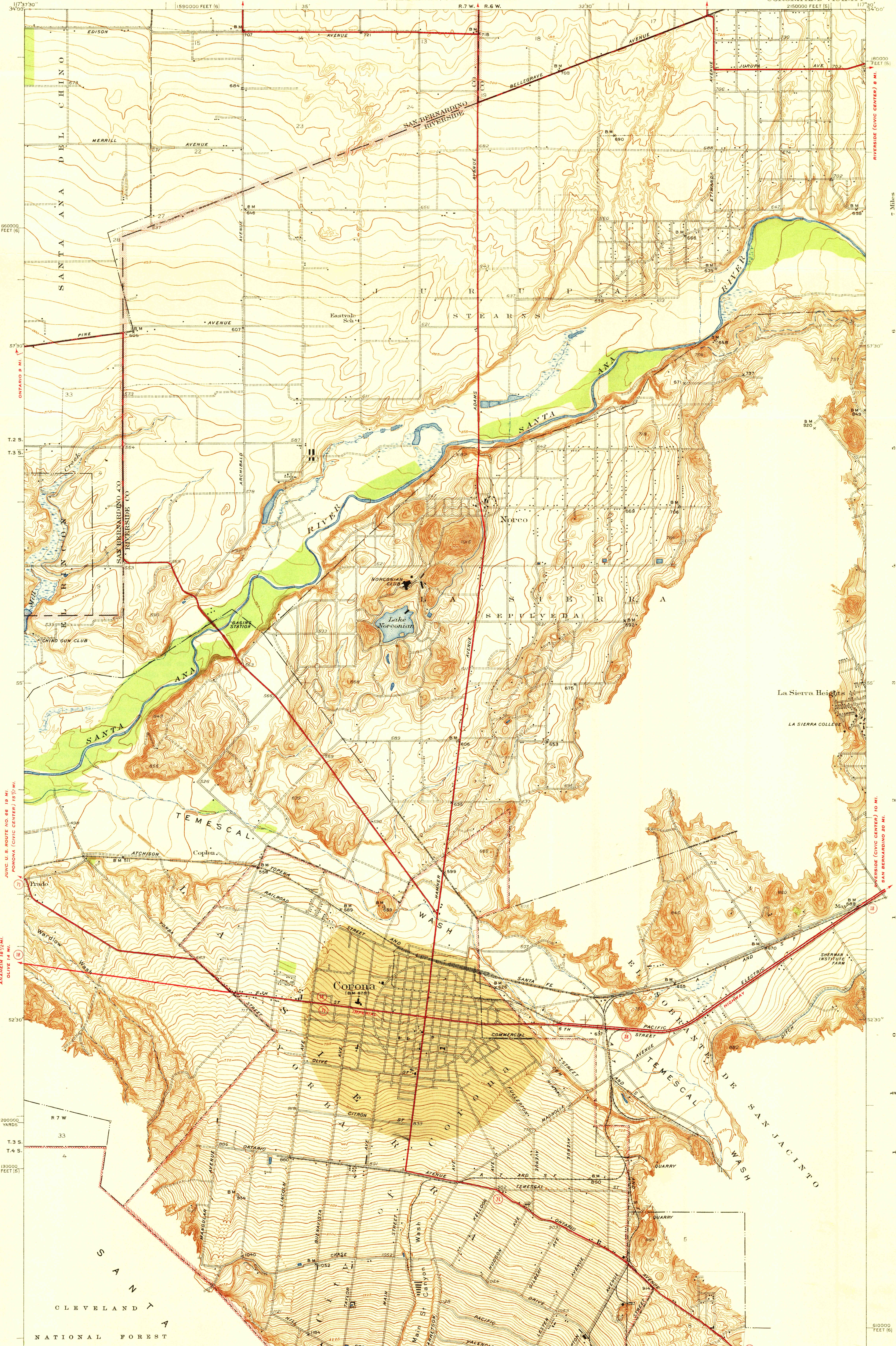


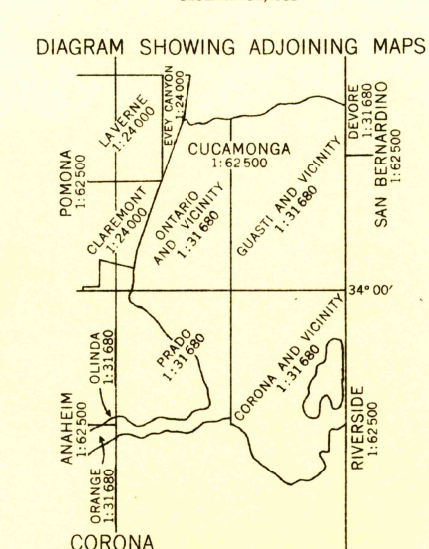
FILE COPY

JUNO. U. S. ROUTE NOS. 70-99 4 1/2 MI.
MIRA LOMA (JUNC. U. S. ROUTE NO. 60) 1 1/4 MI.

CALIFORNIA
CORONA AND VICINITY
2150000 FEET (5) | 117°30'



Topography by W.B. Upton, Jr. and R.S. Stevens
Surveyed in 1933
Gray tint indicates areas in which only landmark buildings are shown



Polyconic projection, 1927 North American datum
5000 yard grid based on U.S. zone system, G
10000 foot grids based on California (5) and California (6) rectangular coordinate systems

CORONA AND VICINITY CALIF
Edition of 1942
N3350-W11730/75X10

ROUTES USUALLY TRAVELED
HARD IMPROVED SURFACES
OTHER SURFACE IMPROVEMENTS 1941
② U. S. ROUTE
③ STATE ROUTE

USGS
Historical File
Topographic Division
Instructions and Printing

Scale 1:125,000
1 Mile
1 Kilometer
Contour interval 5 feet
Datum to mean sea level

JAN 21 1942

2375