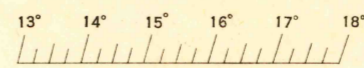


(CALLENE MTN.)
1:52500

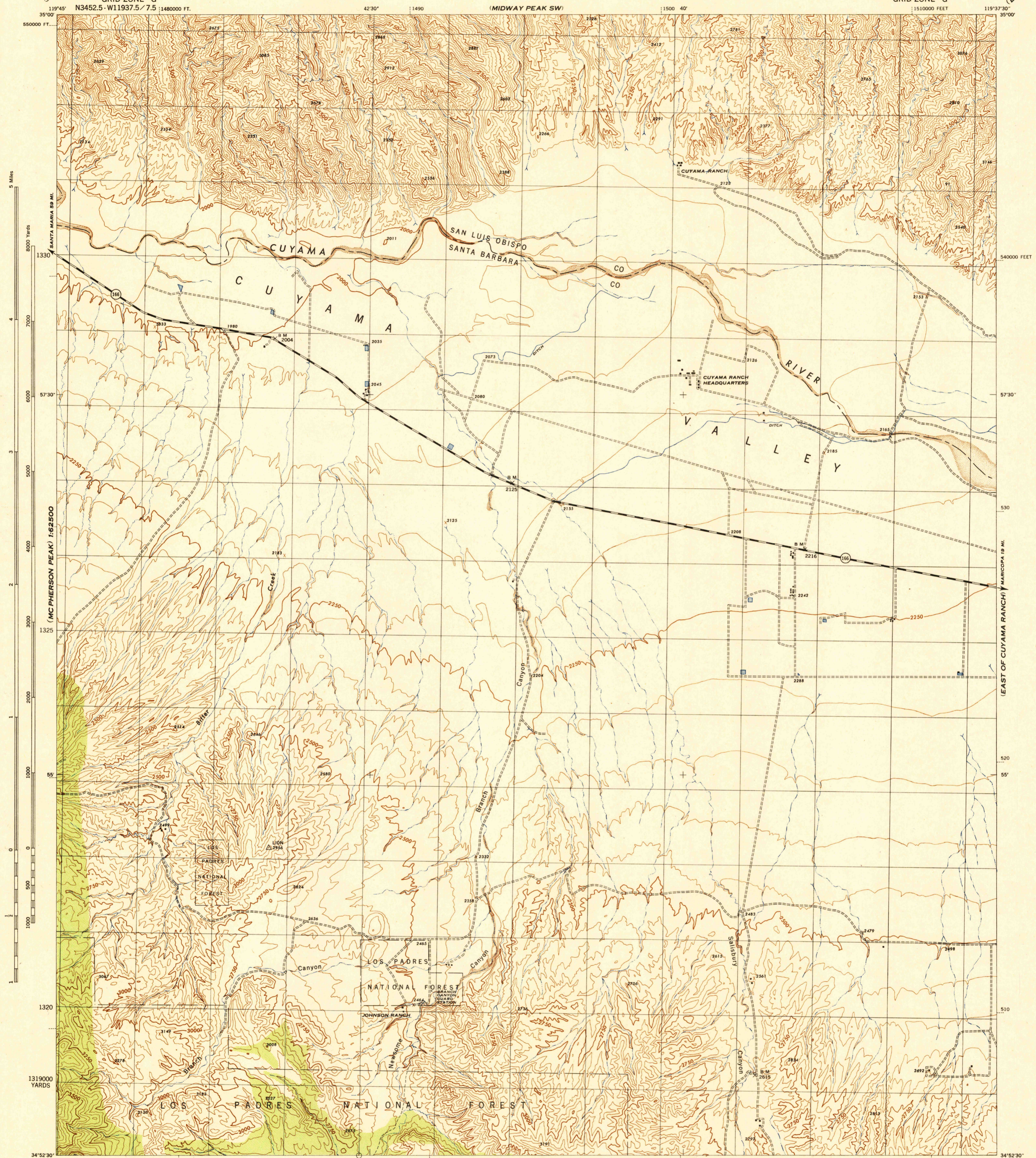
CALIFORNIA
CUYAMA RANCH QUADRANGLE
GRID ZONE "G"

WAR DEPARTMENT
CORPS OF ENGINEERS, U. S. ARMY



CALIFORNIA
CUYAMA RANCH QUADRANGLE
7.5 MINUTE SERIES
GRID ZONE "G"

(ELKHORN HILLS)

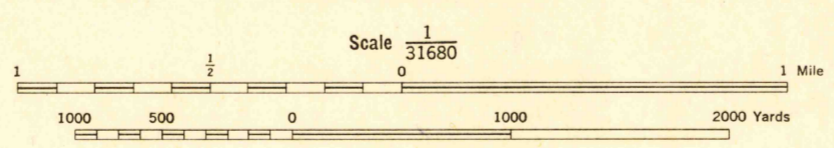


5 Miles
8000 Yards
7000
6000
5000
4000
3000
2000
1000
0
500
1000
1320
1319000 YARDS
1126000 YARDS

540000 FEET
5730'
530
520
55'
510
51230'

(MCPHERSON PEAK)
1:62500

Prepared under the direction of the Chief of Engineers, U. S. Army, 1943.
Control by U. S. Coast and Geodetic Survey, U. S. Geological Survey,
and U. S. Forest Service.
Topography by U. S. Forest Service stereophotogrammetric methods (KEK plotter)
Photography by U. S. Forest Service, 1942.
Polyconic Projection, 1927 North American Datum.



CONTOUR INTERVAL 50 FEET
DATUM IS 1929 MEAN SEA LEVEL

ONE THOUSAND YARD GRID COMPUTED FROM "GRID SYSTEM FOR PROGRESSIVE MAPS
IN THE U. S.," ZONE G, U. S. C. & G. S. SPECIAL PUBLICATION NO. 59
TEN THOUSAND FOOT GRID BASED ON CALIFORNIA PLANE COORDINATE SYSTEM, ZONE 5
THE LAST THREE DIGITS OF THE GRID NUMBERS ARE OMITTED

NOTE: OFFICERS USING THIS MAP WILL MARK MERIDIAN CORRECTIONS AND ADJUSTMENTS WHICH COME
TO THEIR ATTENTION AND WILL DIRECT TO "THE CHIEF OF ENGINEERS, WASHINGTON, D. C."

APPROXIMATE MEAN DECLINATION 1943
FOR CENTER OF SHEET
ANNUAL MAGNETIC CHANGE 0.1' DECREASE
USE DIAGRAM ONLY TO OBTAIN NUMERICAL VALUES. TO DETERMINE MAGNETIC
NORTH LINE, CONNECT THE POINT "P" ON THE SOUTH EDGE OF THE
MAP WITH THE VALUE OF THE ANGLE BETWEEN GRID AND MAGNETIC NORTH,
AS PLOTTED ON THE DEGREE SCALE AT THE NORTH EDGE OF THE MAP.

29TH ENGINEER REPRODUCTION PLANT, PORTLAND, OREGON
ARG NO. 120343
1943

CUYAMA RANCH, CALIF.
N3452.5-W11937.5/7.5

USGS
HISTORICAL FILE
TOPOGRAPHIC DIVISION

(FOX MOUNTAIN)