

(Coalinga)
1:25000

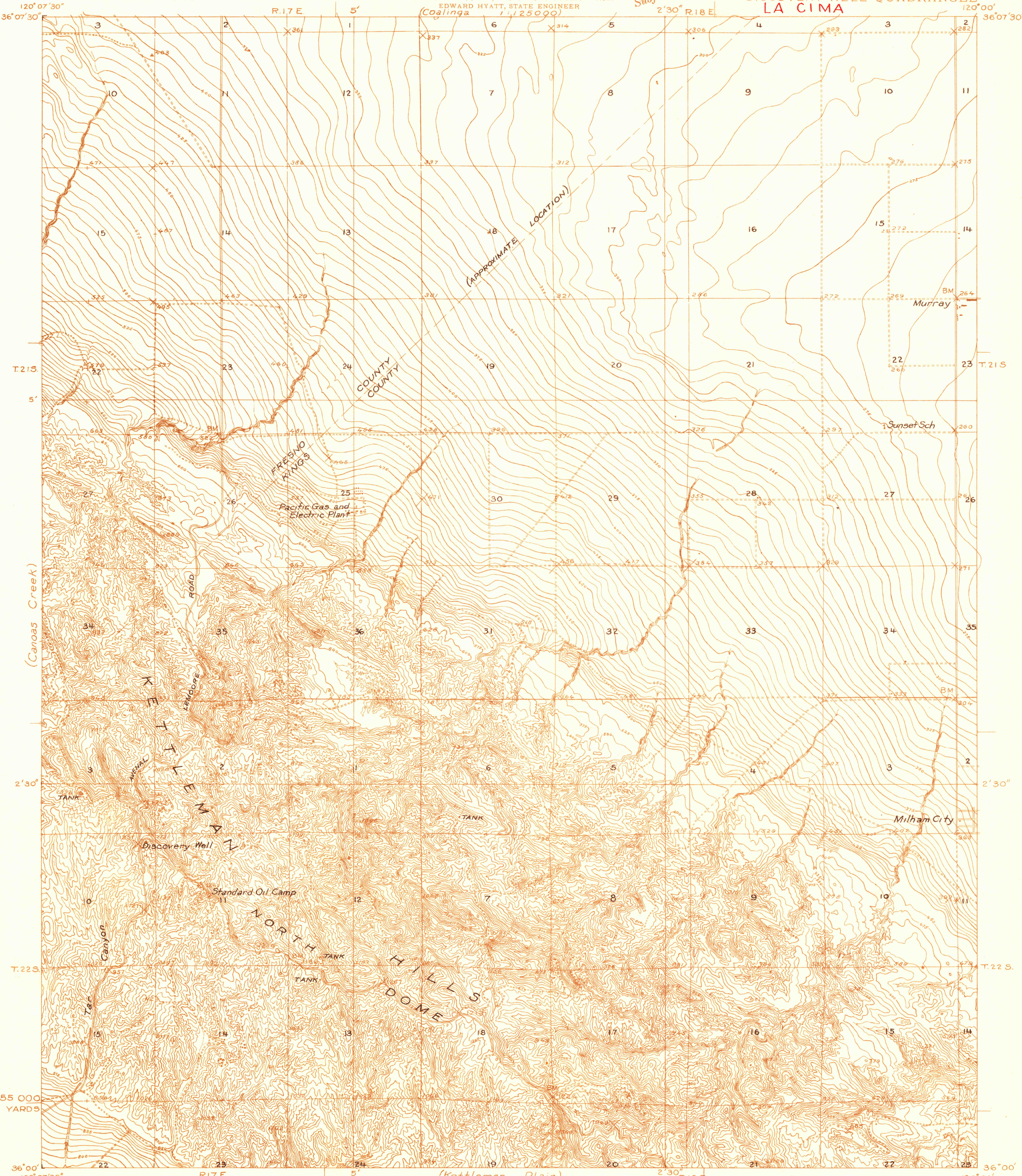
U. S. G. S.
FILE COPY
Inspection and Editing.

DEPARTMENT OF THE INTERIOR
U. S. GEOLOGICAL SURVEY

60-S-IV-E/2
STATE OF CALIFORNIA
JAMES ROLPH, JR., GOVERNOR
WALTER E. GARRISON, DIRECTOR OF PUBLIC WORKS
EDWARD HYATT, STATE ENGINEER
(Coalinga 1:25000)

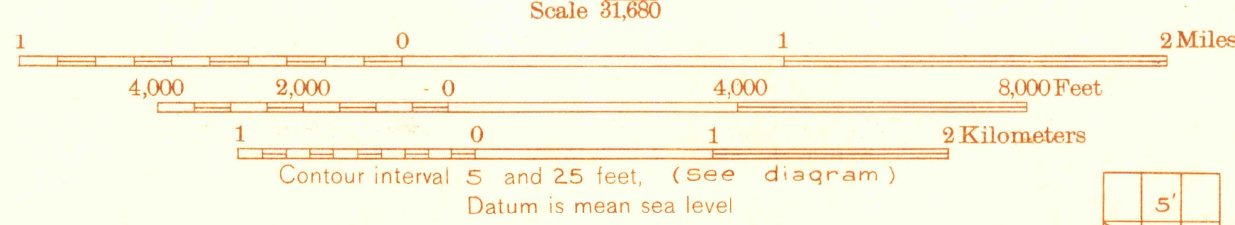
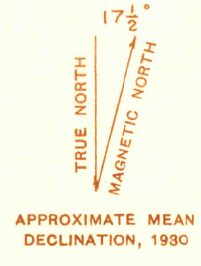
Advance sheet
Subject to correction

CALIFORNIA
DISCOVERY WELL QUADRANGLE
LA CIMA

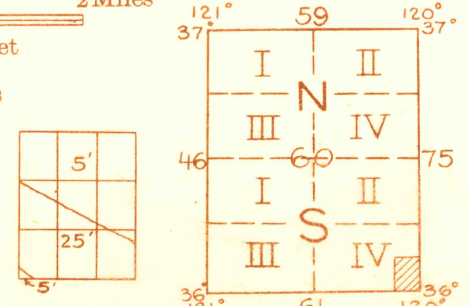


(Cholame)
1:25000

H. H. Hodgeson, Division Engineer
Topography by E. P. Davis
Control by U. S. Geological Survey
Surveyed in 1930



Polyconic projection. North American datum
5000 yard grid based upon U. S. zone system, G



USGS
Historical Photos
Topographic Division

(ADV. NAME)
DISCOVERY WELL, CALIF.
LA CIMA

NAME CHANGED TO

(Middle Dome)