

(PANORAMA HILLS)

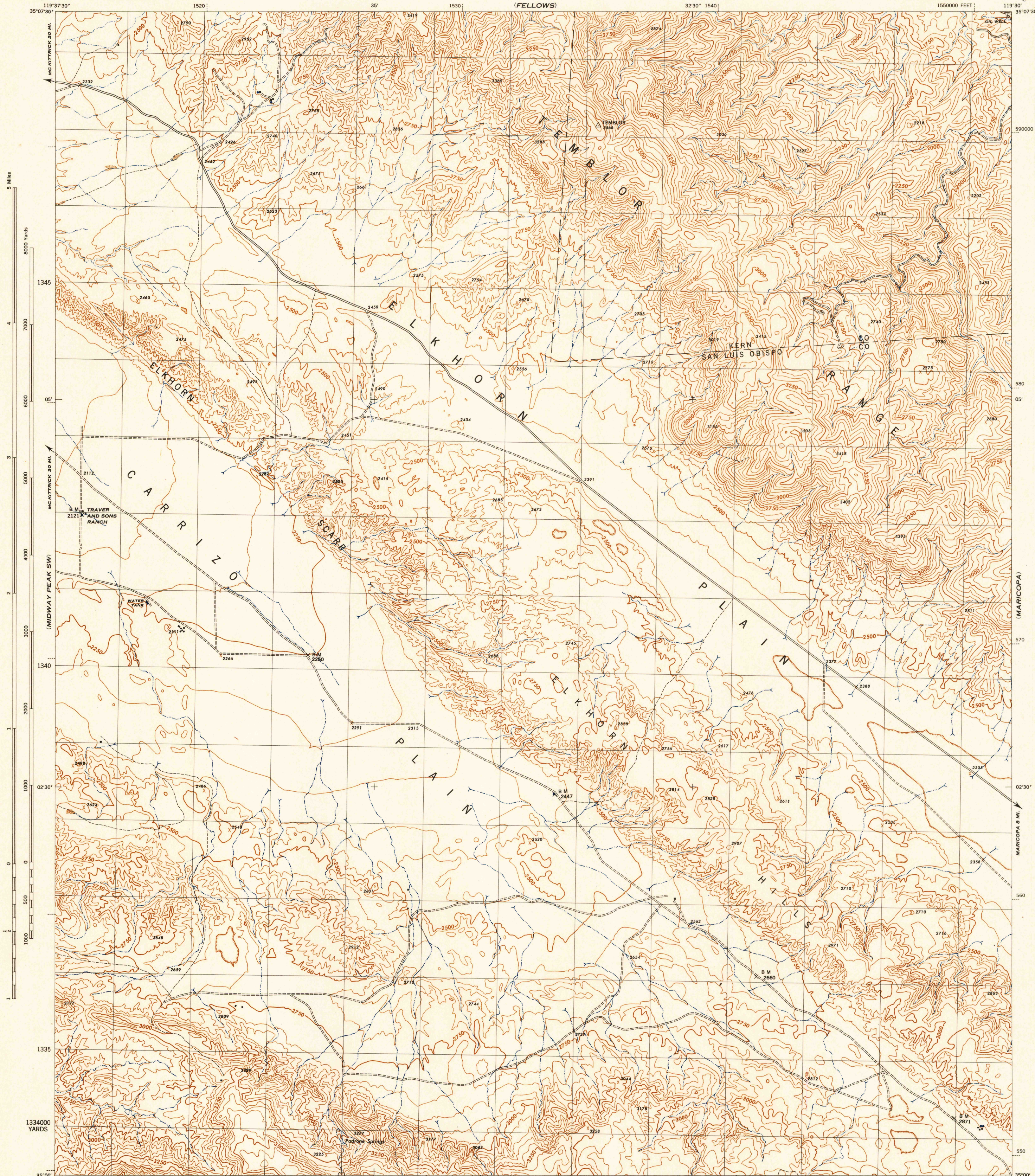
CALIFORNIA  
ELKHORN HILLS QUADRANGLE  
GRID ZONE "G"

WAR DEPARTMENT  
CORPS OF ENGINEERS, U. S. ARMY

13° 14° 15° 16° 17° 18°

CALIFORNIA  
ELKHORN HILLS QUADRANGLE  
7.5 MINUTE SERIES  
GRID ZONE "G"

(BUENA VISTA HILLS)



(CUYAMA RANCH)

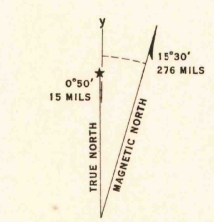
Prepared by U. S. Department of Agriculture, Forest Service, under the direction of the Chief of Engineers, U. S. Army, 1943.  
Control by U. S. Coast and Geodetic Survey, U. S. Geological Survey and U. S. Forest Service.  
Topography by U. S. Forest Service stereophotogrammetric methods (Kek plotter).  
Photography by U. S. Forest Service, 1942.  
Polyconic Projection, 1927 North American Datum.

ROAD CLASSIFICATION  
Dependable hard-surface, heavy-duty road. Loose-surface graded, dry weather road. U. S. Route 160  
Secondary, hard-surface, all-weather road. Dirt road. State Route 30  
More than two lanes indicated by note along road with tick at point of change. 3 LANE 14 LANE  
THIS MAP COMPLIES WITH THE NATIONAL STANDARD MAP ACCURACY REQUIREMENTS.

Scale 1/31680  
1 0 1000 2000 Yards  
1 Mile

CONTOUR INTERVAL 50 FEET  
DATUM IS 1929 MEAN SEA LEVEL

ONE THOUSAND YARD GRID COMPUTED FROM "GRID SYSTEM FOR PROGRESSIVE MAPS IN THE U. S." ZONE G, U. S. C. & G. S. SPECIAL PUBLICATION NO. 59  
TEN THOUSAND FOOT GRID BASED ON CALIFORNIA PLANE COORDINATE SYSTEM, ZONE 5  
THE LAST THREE DIGITS OF THE GRID NUMBERS ARE OMITTED  
NOTE: OFFICER USING THIS MAP WILL HAVE HEARD CORRECTIONS AND ADJUSTMENTS WHEN COME TO THEIR ATTENTION AND MAIL DIRECT TO "THE CHIEF OF ENGINEERS, WASHINGTON, D. C."



USGS  
Historical File  
Topographic Division

29TH ENGINEER REPRODUCTION PLANT, PORTLAND, OREGON  
ANS NO. 120348  
EDITION OF 1944

ELKHORN HILLS, CALIF.  
N3500-W11930/7.5

HISTORICAL  
U. S. G. S.  
FILE COPY  
Inspector and Editor  
HISTORICAL