

(BIG PINE MTN.)

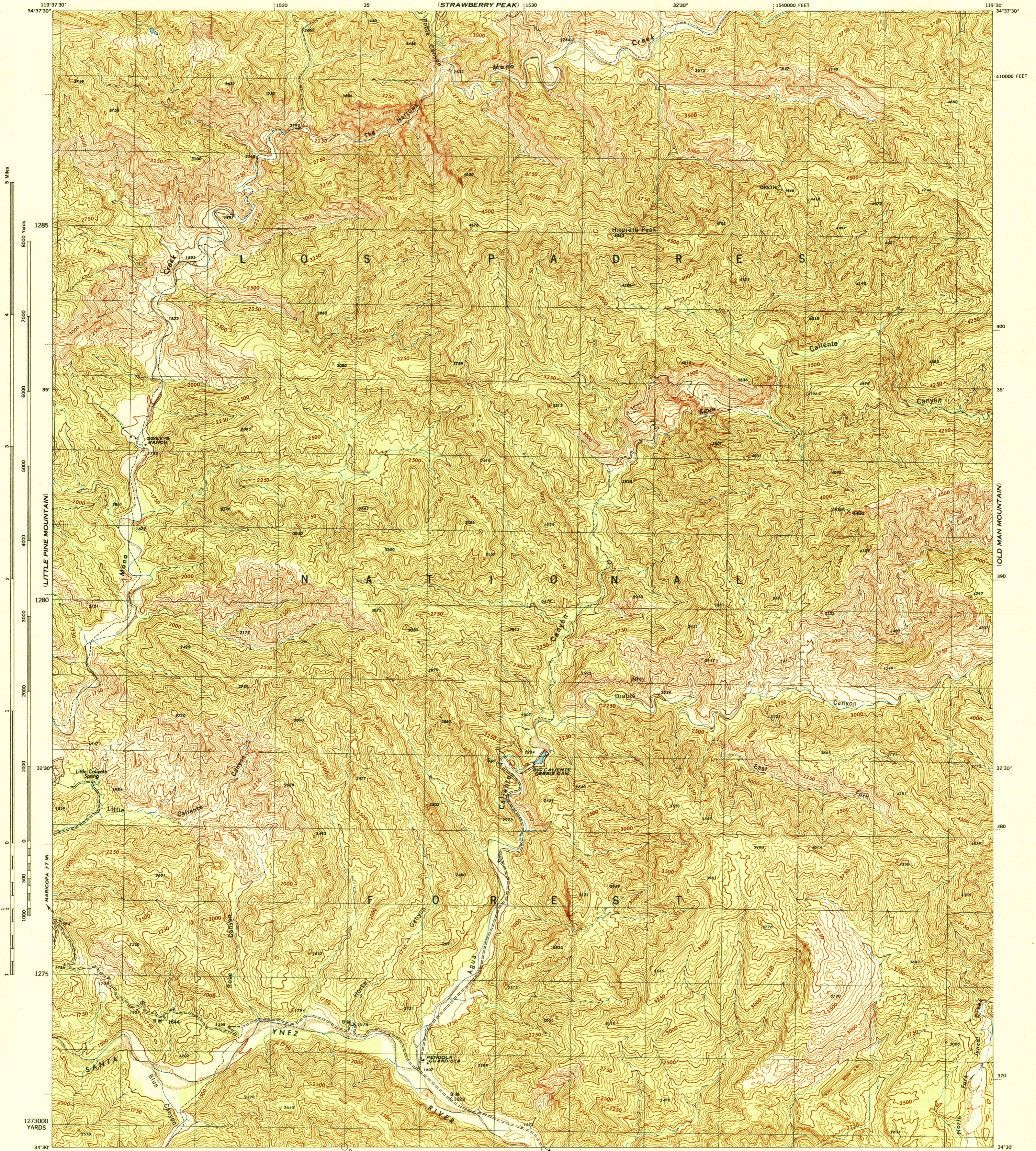
CALIFORNIA  
HILDRETH PEAK QUADRANGLE  
GRID ZONE "G"

WAR DEPARTMENT  
CORPS OF ENGINEERS, U. S. ARMY

FIRST EDITION - 29E 2  
13° 14° 15° 16° 17° 18°

CALIFORNIA  
HILDRETH PEAK QUADRANGLE  
7.5 MINUTE SERIES  
GRID ZONE "G"

(MORRO HILL)



5 Miles  
8000 Yards

7000

6000

5000

4000

3000

2000

1000

0

1000

2000

3000

4000

5000

6000

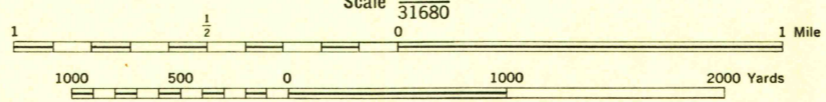
7000

1139000 YARDS 1140

(CARPINTERIA) 1145 SANTA BARBARA 21 MI.

1150

Prepared by U. S. Department of Agriculture, Forest Service, under the direction of the Chief of Engineers, U. S. Army, 1943.  
Control by U. S. Coast and Geodetic Survey, U. S. Geological Survey and U. S. Forest Service.  
Topography by U. S. Forest Service stereophotogrammetric methods (KEK plotter).  
Photography by U. S. Forest Service, 1942.  
Polyconic Projection North American, 1927 Datum.



CONTOUR INTERVAL 50 FEET  
DATUM IS 1929 MEAN SEA LEVEL

ONE THOUSAND YARD GRID COMPUTED FROM "GRID SYSTEM FOR PROGRESSIVE MAPS IN THE U. S. - ZONE G, U. S. C. & G. S. SPECIAL PUBLICATION NO. 99"  
TEN THOUSAND FOOT GRID BASED ON CALIFORNIA PLANE COORDINATE SYSTEM, ZONE 5  
THE LAST THREE DIGITS OF THE GRID NUMBERS ARE OMITTED  
NOTE: OFFICERS USING THIS MAP WILL MAKE NECESSARY CORRECTIONS AND ADDITIONS WHEN COME TO THEIR ATTENTION AND WILL SEND TO THE CHIEF OF ENGINEERS, WASHINGTON, D. C.

APPROXIMATE MEAN DECLINATION 1943  
ANNUAL MAGNETIC CHANGE 0.1" DECREASE  
USE DIAGRAM ONLY TO OBTAIN NUMERICAL VALUES TO DETERMINE MAGNETIC NORTH LINE. CONNECT THE POINT "P" ON THE SOUTH EDGE OF THE MAP WITH THE VALUE OF THE ANGLE BETWEEN GRID AND MAGNETIC NORTH, AS PLOTTED ON THE DEGREE SCALE AT THE NORTH EDGE OF THE MAP.

HILDRETH PEAK, CALIF.  
N3430-W11930/7.5

28TH ENGINEER REPRODUCTION PLANT, PORTLAND, OREGON  
MAP NO. 125932  
EDITION OF 1944

(SANTA BARBARA)

(VENTURA 1:62,500)

USGS  
HISTORICAL FILE