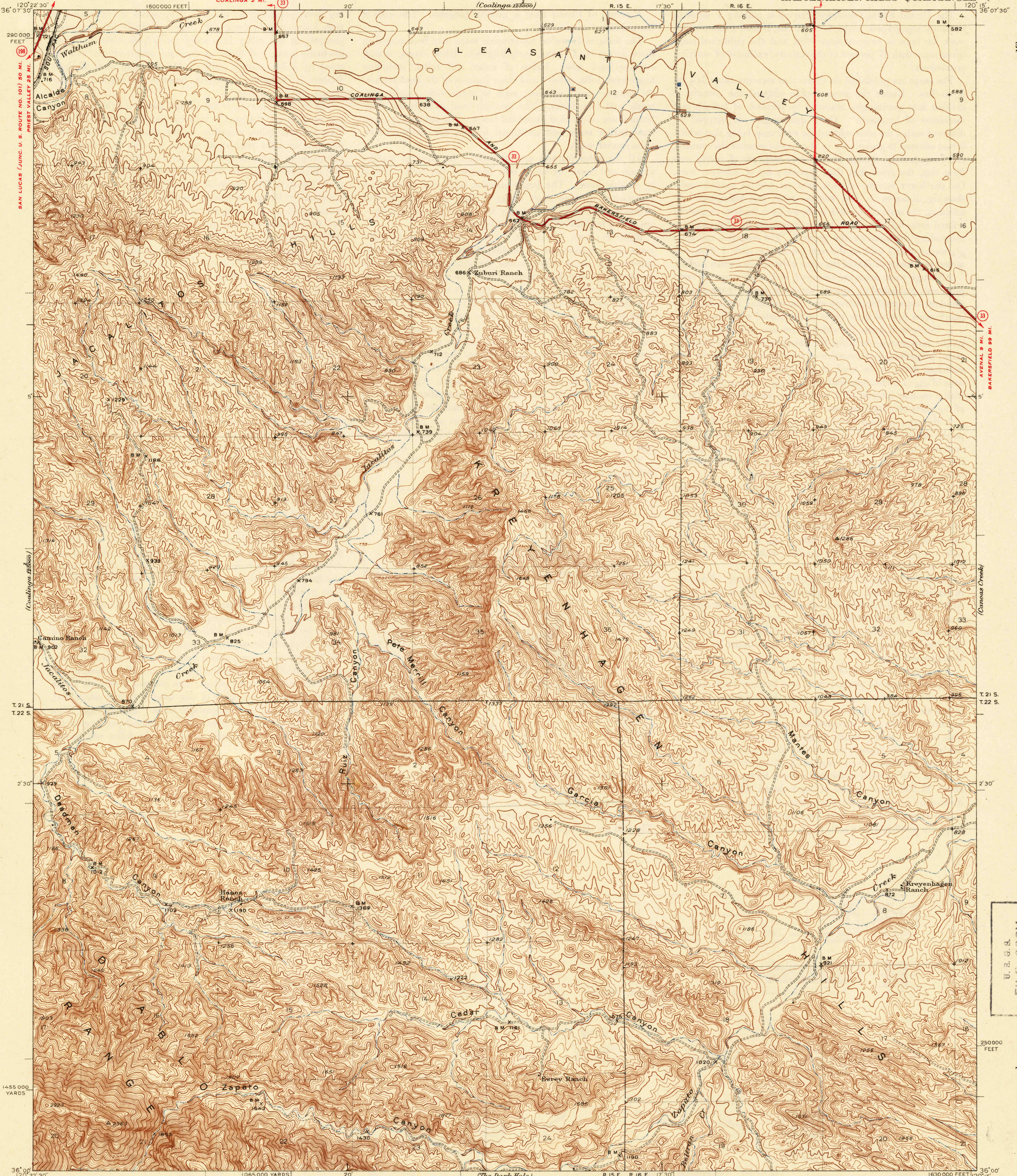


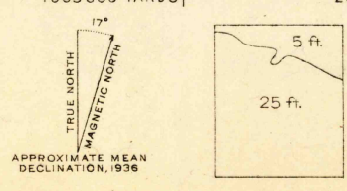
U. S. G. S.  
FILE COPY  
Inspection and Editing.

FRESNO (CIVIC CENTER) 62 MI.  
COALINGA 1 MI. UNITED STATES  
DEPARTMENT OF THE INTERIOR  
GEOLOGICAL SURVEY

FRESNO (CIVIC CENTER) 65 MI. CALIFORNIA  
HURON 15 MI. (FRESNO COUNTY)  
KREYENHAGEN HILLS QUADRANGLE



Topography by W.R. Chenoweth  
and F.K. Van Zandt  
Surveyed in 1935-1936



ROUTES USUALLY TRAVELED  
HARD IMPERVIOUS SURFACES  
OTHER SURFACE IMPROVEMENTS  
1940  
② U. S. ROUTE  
③ STATE ROUTE

Polyconic projection. North American datum  
5000 yard grid based on U. S. zone system, G  
10000 foot grid based on California (4)  
rectangular coordinate system

KREYENHAGEN HILLS, CALIF. USGS  
Edition of 1941  
Historical File  
Topographic Division  
N3600-W12015/75  
MAY 13 1941 2460

U. S. G. S.  
FILE COPY  
Inspection and Editing.