

TOPOGRAPHIC FILES

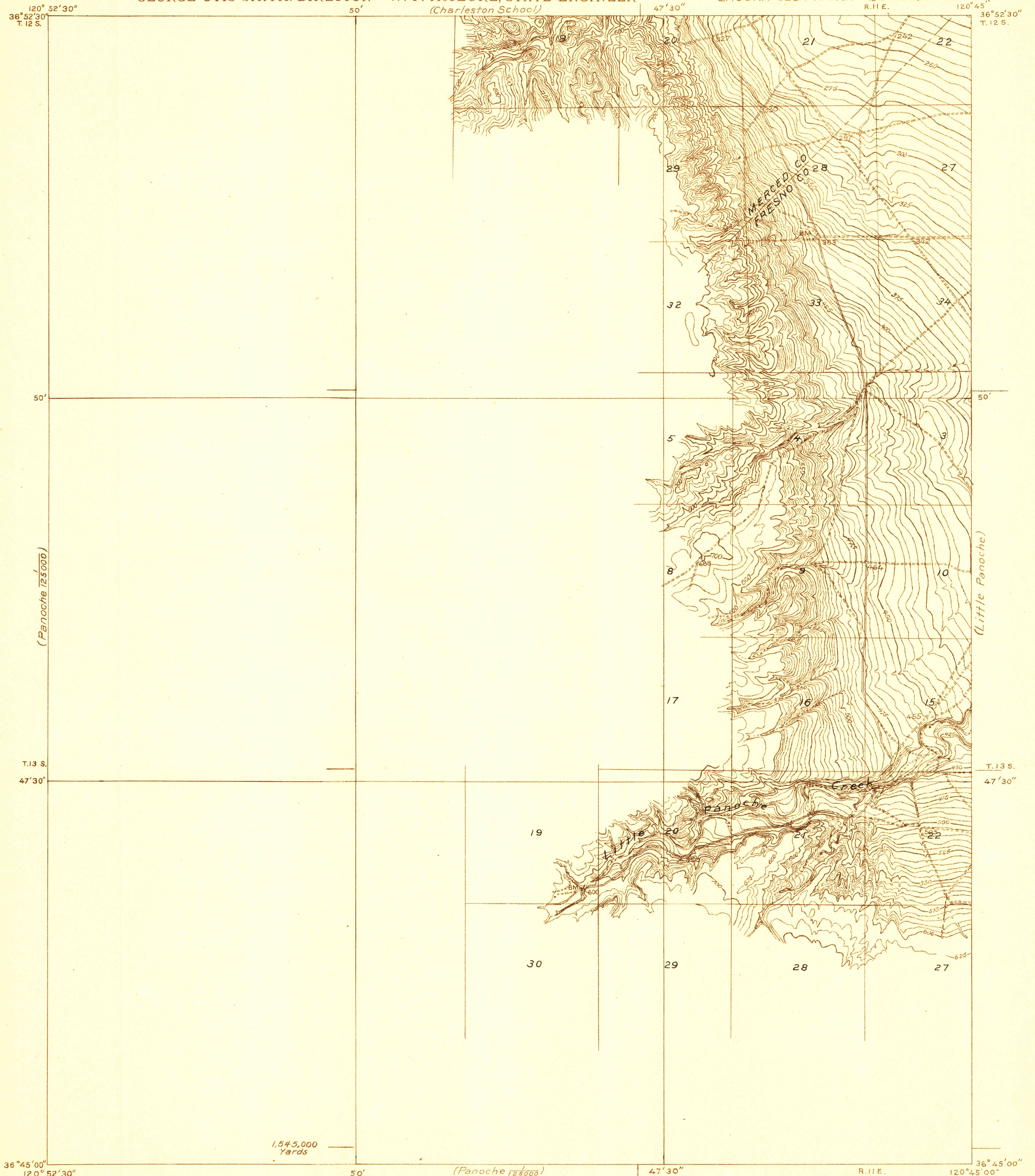
RETAINED COPY
SEP 2 1921
This sheet must not be taken from the files without an order from the Chief Geographer.

60-N-1-W/2-Pt. of SE/4
TOPOGRAPHY
STATE OF CALIFORNIA
WILLIAM D. STEPHENS, GOVERNOR
W. F. McCLURE, STATE ENGINEER
(Charleston School)

Advance sheet.
Subject to correction.

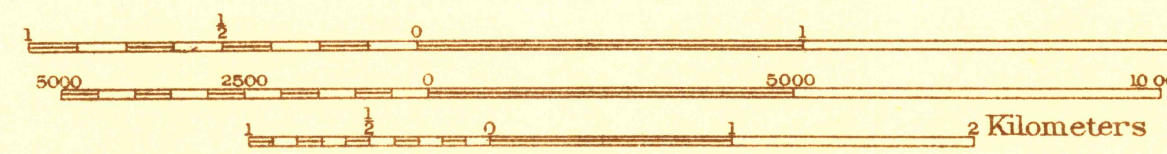
CALIFORNIA
LAGUNA SECA RANCH QUADRANGLE
R. 11 E.

(Dos Palos)

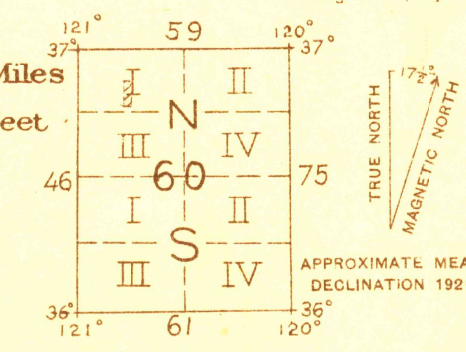


1,545,000 Yards
Scale 31680
1,020,000 Yards
T. 13 S. 47' 30" R. 11 E. 120° 45' 00" T. 12 S. 36° 45' 00" 120° 52' 30"

C. H. Birdseye, Chief Topographic Engineer
Geo. R. Davis, Division Topographic Engineer.
Topography by RA Kiger and W.G. Carson.
Control by L.F. Biggs, C.F. Urquhart, and W.H. Monahan.
Surveyed in 1920.



Contour interval 5 feet and 25 feet,
Changing on the 600 foot contour.
Datum is mean sea level.



SURVEYED IN COOPERATION WITH THE STATE OF CALIFORNIA

LAGUNA SECA RANCH
Edition of 1921

(Tierra Loma School)