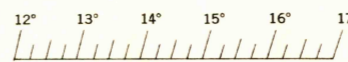


(SAWMILL MOUNTAIN)

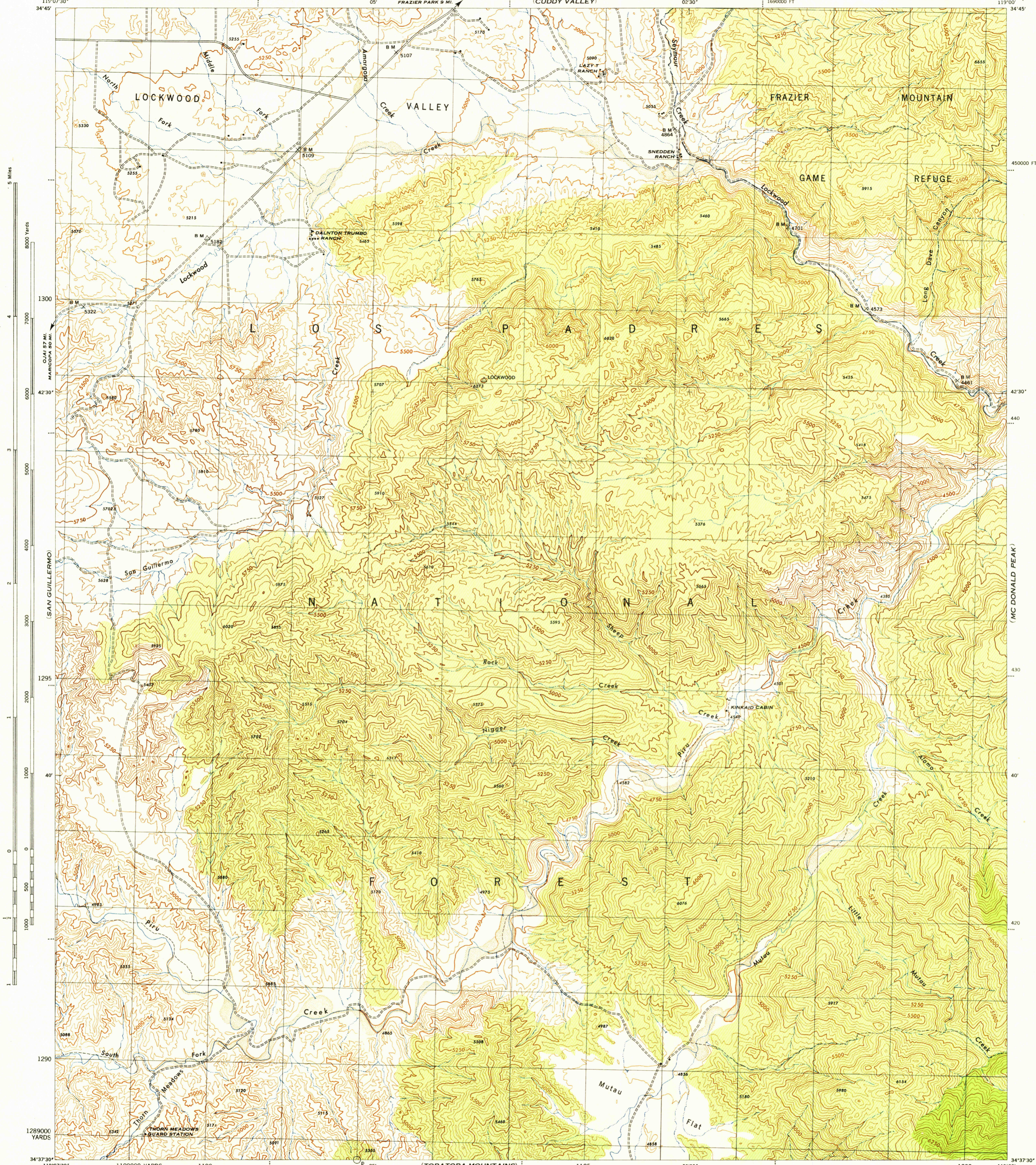
CALIFORNIA
LOCKWOOD VALLEY QUADRANGLE
GRID ZONE "G"

WAR DEPARTMENT
CORPS OF ENGINEERS, U. S. ARMY



CALIFORNIA
LOCKWOOD VALLEY QUADRANGLE
7.5 MINUTE SERIES
GRID ZONE "G"

(FRAZIER MOUNTAIN)



Prepared by U. S. Department of Agriculture, Forest Service, under the direction of the Chief of Engineers, U. S. Army, 1943.
 Control by U. S. Coast and Geodetic Survey, U. S. Geological Survey and U. S. Forest Service.
 Topography by U. S. Forest Service stereophotogrammetric methods (KEK plotter).
 Photography by U. S. Forest Service, 1942.
 Polyconic Projection, 1927 North American Datum.

ROAD CLASSIFICATION
 Dependable hard surface, heavy-duty road. Loose-surface graded, dry weather road. U. S. Route 160
 Secondary, hard-surface, all-weather road. Dirt road. State Route 30
 More than two lanes indicated by note along road with tick at point of change. 3 LANE 4 LANE
 THIS MAP COMPLIES WITH THE NATIONAL STANDARD MAP ACCURACY REQUIREMENTS.

Scale 1/31680
 1 1/2 0 1 2
 1000 500 0 1000 2000 Yards

CONTOUR INTERVAL 50 FEET
 DATUM IS 1929 MEAN SEA LEVEL
 ONE THOUSAND YARD GRID COMPUTED FROM GRID SYSTEM FOR PROGRESSIVE MAPS IN THE U. S. ZONE G, U. S. C. & G. S. SPECIAL PUBLICATION NO. 59
 TEN THOUSAND FOOT GRID BASED ON CALIFORNIA PLANE COORDINATE SYSTEM, ZONE 5
 THE LAST THREE DIGITS OF THE GRID NUMBERS ARE OMITTED
 NOTE: OFFICERS USING THIS MAP WILL BEAR HEAVY RESPONSIBILITY AND SHOULD BECOME ACCQUAINTED WITH THE NATIONAL STANDARD MAP ACCURACY REQUIREMENTS AND SHALL DIRECT TO THE CHIEF OF ENGINEERS, WASHINGTON, D. C.

APPROXIMATE MEAN DECLINATION 1944
 ANNUAL MAGNETIC CHANGE 1" DECREASE
 USE DIAGRAM ONLY TO OBTAIN NUMERICAL VALUES TO DETERMINE MAGNETIC NORTH LINE. CONNECT THE PIVOT POINT "P" ON THE SOUTH EDGE OF THE MAP WITH THE VALUE OF THE ANGLE BETWEEN GRID AND MAGNETIC NORTH, AS PLOTTED ON THE DEGREE SCALE AT THE NORTH EDGE OF THE MAP.

25TH ENGINEER REPRODUCTION PLANT, PORTLAND, OREGON
 AFS NO. 120556
 EDITION OF 1944

LOCKWOOD VALLEY, CALIF.
N3437.5-W11900/7.5

USGS
Historical File
Topographic FILE COPY
Inspector and Printing

(LION CANYON)

(DEVILS HEART PK)