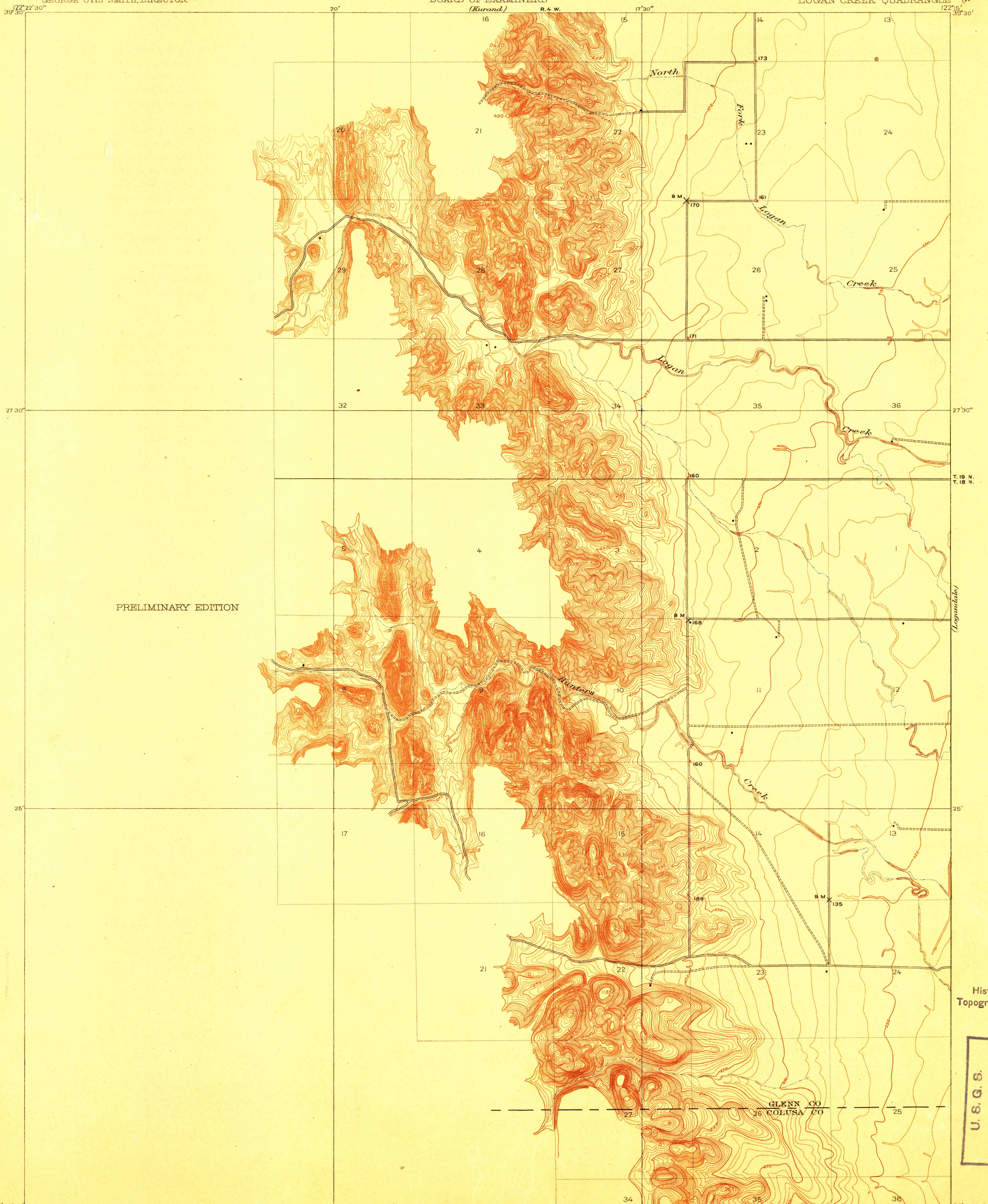


DEPARTMENT OF THE INTERIOR  
FRANKLIN K. LANE, SECRETARY  
U.S. GEOLOGICAL SURVEY  
GEORGE OTIS SMITH, DIRECTOR

TOPOGRAPHY  
STATE OF CALIFORNIA  
GEORGE C. PARDEE, GOVERNOR  
C.F. CURRY, SEC. OF STATE U.S. WEBB, ATTY. GEN.  
BOARD OF EXAMINERS  
(Kurand) R. & W.

CALIFORNIA  
LOGAN CREEK QUADRANGLE

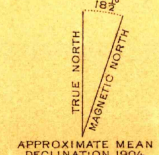
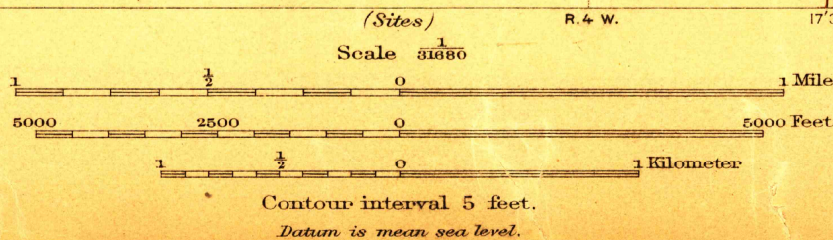
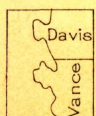


PRELIMINARY EDITION

USGS  
Historical File  
Topographic Division

U.S.G.S.  
FILE COPY  
Ed. Div. Topographic Maps.

ENGRAVED 1918 BY U.S.G.S.  
E.M. Douglas, Geographer.  
R.B. Marshall, in charge of section.  
Topography by Geo. R. Davis and W.N. Vance.  
Control by C.F. Urquhart and H. Hartley.  
Surveyed in 1904.



Edition of 1918.

FEB 7 - 1918 1915

LOGAN CREEK