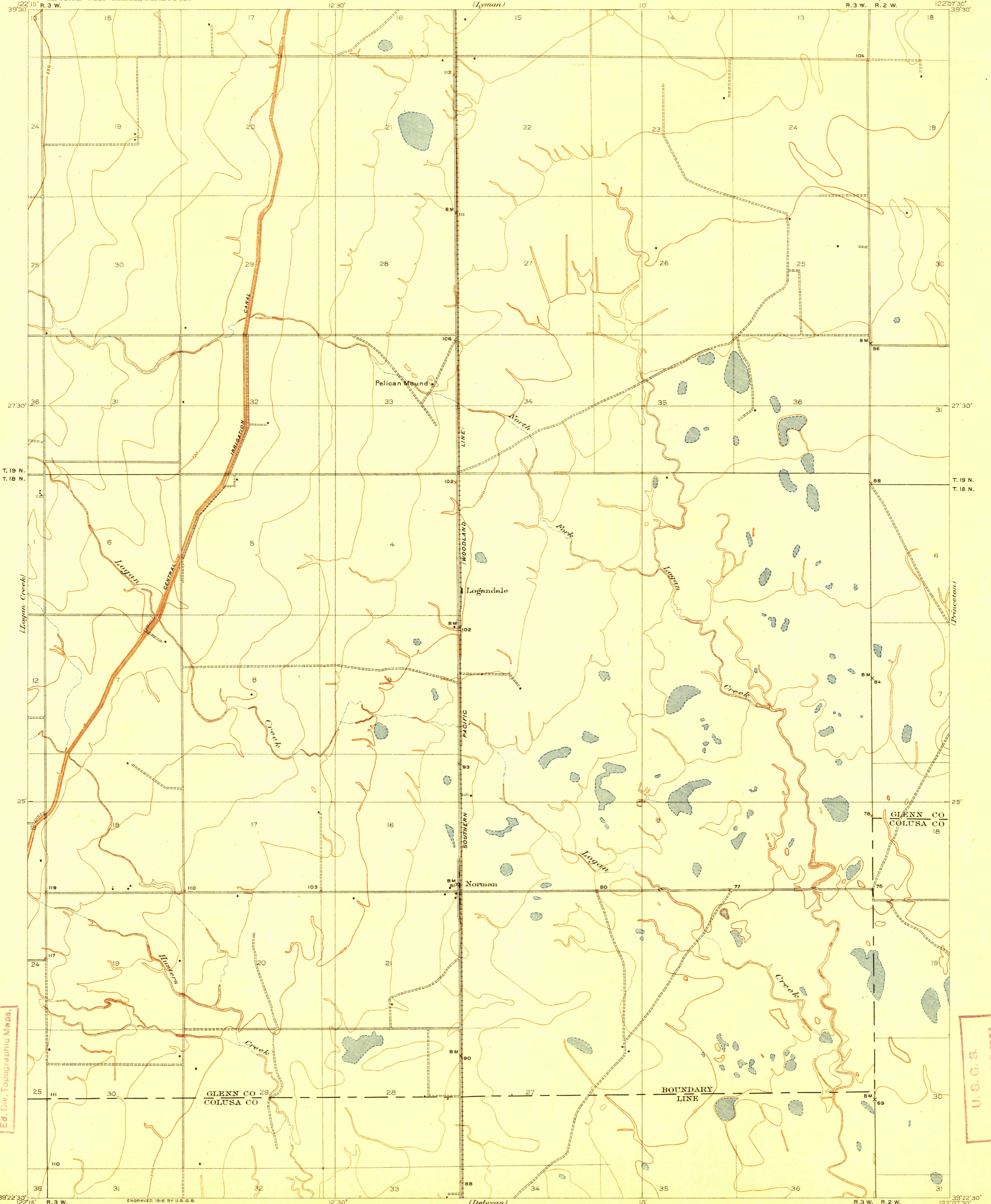


TOPOGRAPHY

DEPARTMENT OF THE INTERIOR
FRANKLIN K. LANE, SECRETARY
U.S. GEOLOGICAL SURVEY
GEORGE OTIS SMITH, DIRECTOR

STATE OF CALIFORNIA
GEORGE C. PARDEE, GOVERNOR
C.F. CURRY, SEC. OF STATE U.S. WEBB, ATTY. GEN.
BOARD OF EXAMINERS
(Lyman)

CALIFORNIA
LOGANDALE QUADRANGLE
R. 3 W. R. 2 W.

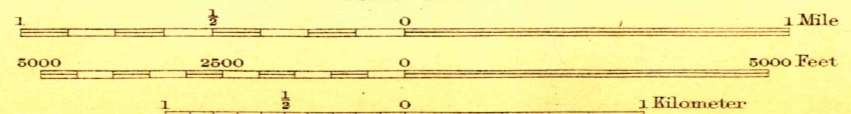


U.S.G.S.
FILE COPY
Ed. Div. Topographic Maps.

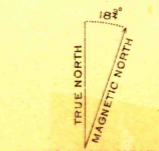
U.S.G.S.
FILE COPY
Ed. Div. Topographic Maps.

ENGRAVED 1916 BY U.S.G.S.
E.M. Douglas, Geographer.
R.B. Marshall, in charge of section.
Topography by Geo. R. Davis, W.N. Vance,
H.R. Ferris, and J.P. Harrison.
Control by C.F. Urquhart, E.W. Glafko, and E.M. Fry.
Surveyed in 1904.

Davis	H.
Vance	Ferris



Contour interval 5 feet.



U.S.G.S. 7 1917 3650
Historical File
Topographic Division
LOGANDALE

SURVEYED IN COOPERATION WITH THE STATE OF CALIFORNIA.