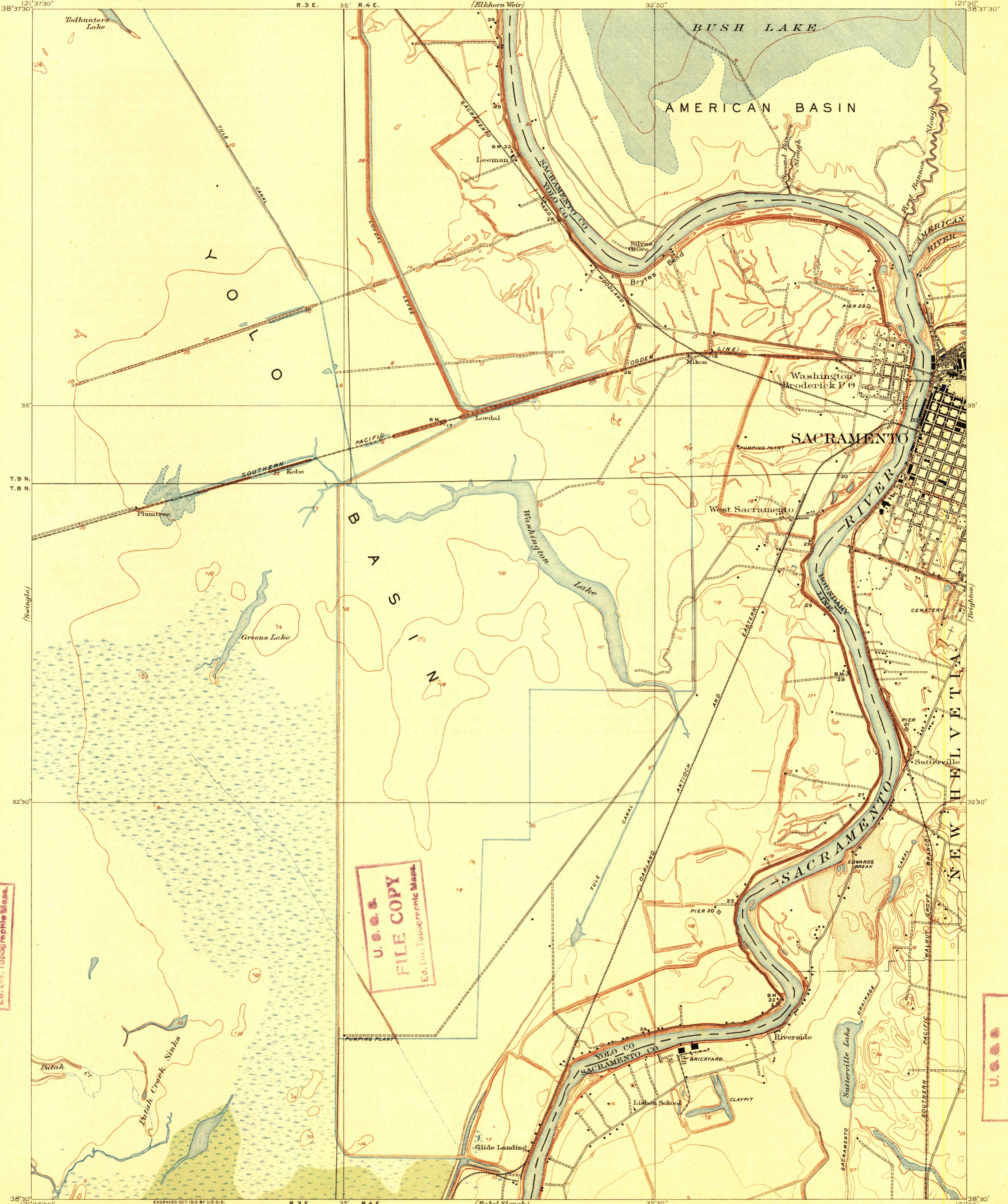


TOPOGRAPHY

DEPARTMENT OF THE INTERIOR
 FRANKLIN K. LANE, SECRETARY
 U. S. GEOLOGICAL SURVEY
 GEORGE OTIS SMITH, DIRECTOR

STATE OF CALIFORNIA
 GEORGE C. PARDEE, GOVERNOR
 C. F. CURRY, SEC. OF STATE U. S. WEBB, ATTY. GEN.
 BOARD OF EXAMINERS

CALIFORNIA
 LOVDAL QUADRANGLE



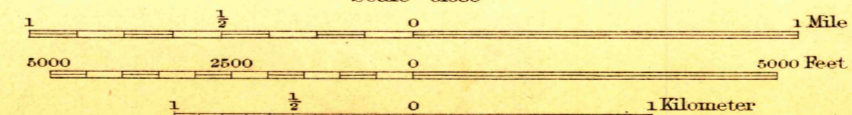
U.S.G.S.
FILE COPY
 Ed. Div. Topographic Maps.

U.S.G.S.
FILE COPY
 Ed. Div. Topographic Maps.

U.S.G.S.
FILE COPY
 Ed. Div. Topographic Maps.

ENGRAVED OCT. 1915 BY U.S.G.S.
 E. M. Douglas, Geographer.
 R. B. Marshall, in charge of section.
 Topography by H. R. Ferriss and W. N. Vance.
 Control by C. F. Urquhart, C. H. Birdseye,
 C. H. Semper, L. F. Biggs, and G. C. Douglas.
 Surveyed in 1905.

Ferriss
 Vance



Contour interval 5 feet.
 Datum is mean sea level.

TRUE NORTH
 MAGNETIC NORTH
 APPROXIMATE MEAN
 DECLINATION 1905.

Edition of 1916.

JUN 17 1916 3575
 USGS

Historical File
 Topographic Division

LOVDAL

NAME CHANGED TO SACRAMENTO WEST (1:24,000)