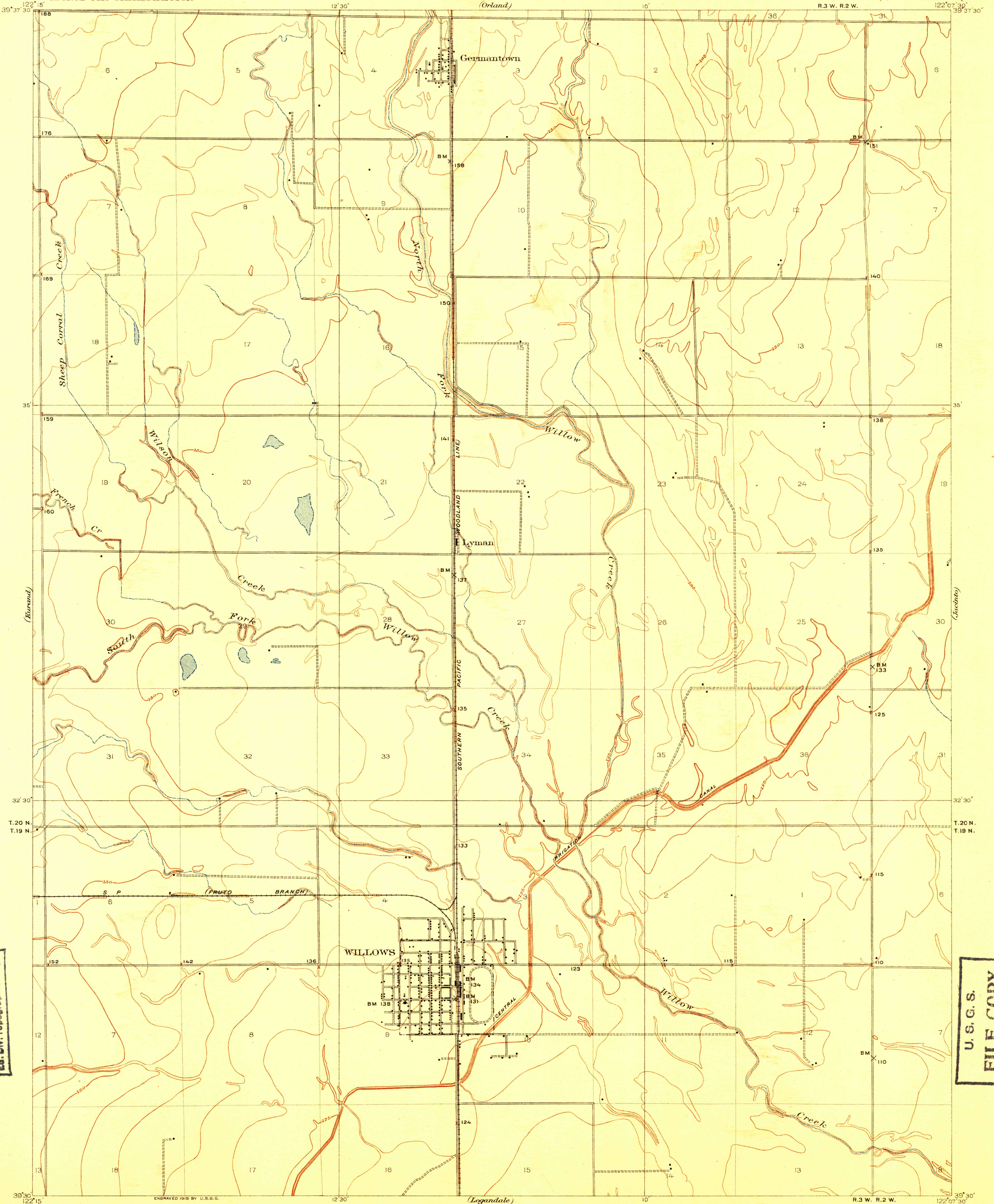


TOPOGRAPHY

DEPARTMENT OF THE INTERIOR
FRANKLIN K. LANE, SECRETARY
U. S. GEOLOGICAL SURVEY
GEORGE OTIS SMITH, DIRECTOR

STATE OF CALIFORNIA
GEORGE C. PARDEE, GOVERNOR
C. F. CURRY, SEC. OF STATE U. S. WEBB, ATTY. GEN.
BOARD OF EXAMINERS

CALIFORNIA
(GLENN COUNTY)
LYMAN QUADRANGLE

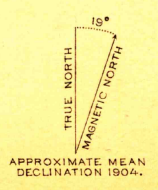
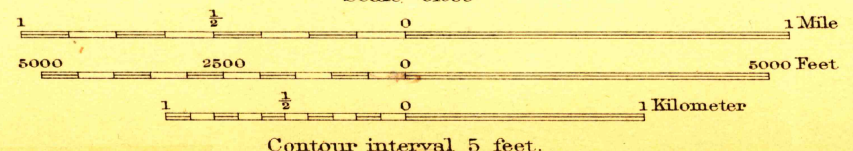


U. S. G. S.
FILE COPY
Ed. Div. Topographic Maps.

U. S. G. S.
FILE COPY
Ed. Div. Topographic Maps.

ENGRAVED 1915 BY U.S.G.S.
E. M. Douglas, Geographer.
R. B. Marshall, in charge of section.
Topography by Geo. R. Davis, J. P. Harrison,
and E. P. Davis.
Control by C. F. Urquhart, E. W. Glafko, and H. Hartley.
Surveyed in 1904.

G.R.D.	E.P.D.
H	



Edition of 1917.
MAY 25 1917 2100

USCS
Historical File
Topographic Division
LYMAN