

TOPOGRAPHY

U.S. GEOLOGICAL SURVEY  
GEORGE OTIS SMITH, DIRECTOR

STATE OF CALIFORNIA  
DEPARTMENT OF ENGINEERING  
(Vina 02300)

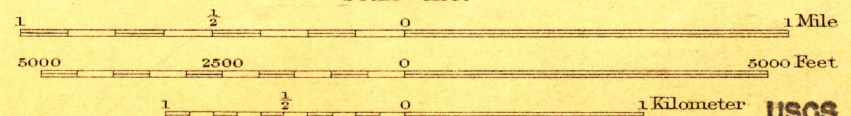
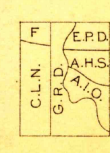
CALIFORNIA  
MC INTOSH LANDING QUADRANGLE



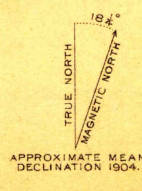
U. S. G. S.  
FILE COPY  
Ed. Div. Topographic Maps.

U. S. G. S.  
FILE COPY  
Ed. Div. Topographic Maps.

(Hamilton)  
E. M. Douglas, Geographer.  
R. B. Marshall, in charge of section.  
Topography by G. R. Davis, C. L. Nelson, A. H. Sylvester,  
A. I. Oliver, E. P. Davis and S. P. Floore.  
Control by C. F. Urquhart and A. I. Oliver.  
Surveyed in 1904.



Contour interval 5 feet.  
Datum is mean sea level.



Edition of Mar. 1914.

JUN 30 1914 3613.

MC INTOSH LANDING

NAME CHANGED TO FOSTER ISLAND  
(1:24000)

SURVEYED IN COOPERATION WITH THE STATE OF CALIFORNIA.