

CALIENTE MOUNTAIN  
1:62500

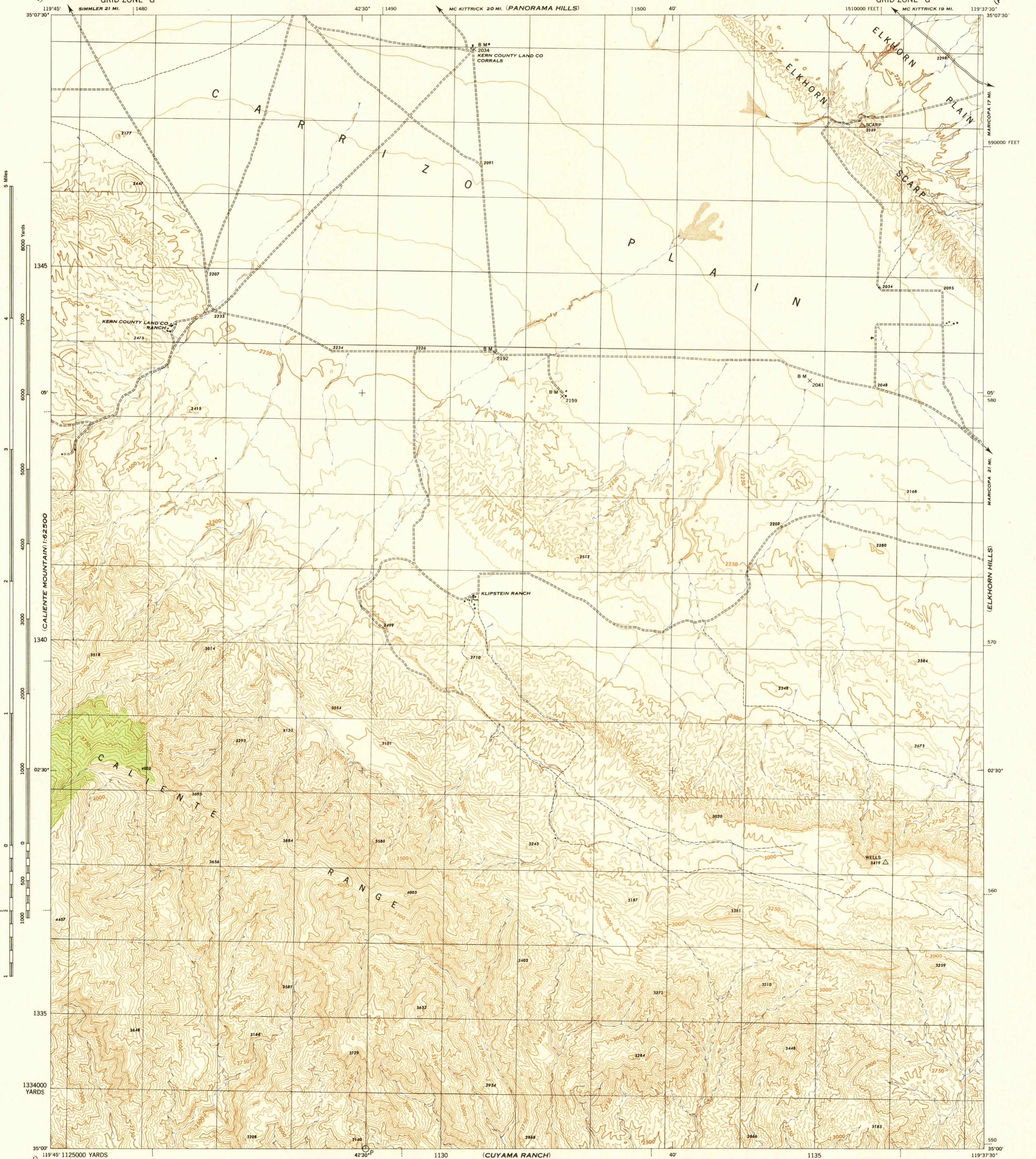
CALIFORNIA  
MIDWAY PEAK SW QUADRANGLE  
GRID ZONE "G"

WAR DEPARTMENT  
CORPS OF ENGINEERS, U. S. ARMY

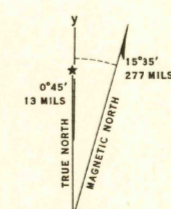
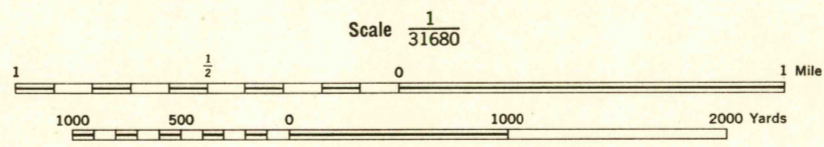
FIRST EDITION - 29E 2  
13° 14° 15° 16° 17° 18°

CALIFORNIA  
MIDWAY PEAK SW QUADRANGLE  
7.5 MINUTE SERIES  
GRID ZONE "G"

(FELLOWS)



Prepared by U. S. Department of Agriculture, Forest Service, under the direction of the Chief of Engineers, U. S. Army, 1943.  
Control by U. S. Coast and Geodetic Survey, U. S. Geological Survey and U. S. Forest Service.  
Topography by U. S. Forest Service stereophotogrammetric methods (MEK plotter).  
Photography by U. S. Forest Service, 1942.  
Polyconic Projection, 1927 North American Datum.



29TH ENGINEER REPRODUCTION PLANT, PORTLAND, OREGON  
AMS NO. 121893  
EDITION OF 1944

**ROAD CLASSIFICATION**  
Dependable hard-surface, heavy-duty road. Loose-surface graded, dry weather road. U. S. Route 160  
Secondary, hard-surface, all-weather road. Dirt road. State Route 30  
More than two lanes indicated by note along road with tick at point of change. 3 LANE 4 LANE  
THIS MAP COMPLIES WITH THE NATIONAL STANDARD MAP ACCURACY REQUIREMENTS.



CONTOUR INTERVAL 50 FEET  
DATUM IS 1929 MEAN SEA LEVEL

ONE THOUSAND YARD GRID COMPUTED FROM "GRID SYSTEM FOR PROGRESSIVE MAPS IN THE U. S." ZONE O, U. S. C. & G. S. SPECIAL PUBLICATION NO. 99  
TEN THOUSAND FOOT GRID BASED ON CALIFORNIA PLANE COORDINATE SYSTEM, ZONE 9  
THE LAST THREE DIGITS OF THE GRID NUMBERS ARE OMITTED  
NOTE: OFFICERS USING THIS MAP WILL MAKE NECESSARY CORRECTIONS AND ADJUSTMENTS WHICH COME TO THEIR ATTENTION AND WILL REFER TO "THE CHIEF OF ENGINEERS, WASHINGTON, D. C."

APPROXIMATE MEAN DECLINATION 1944  
ANNUAL MAGNETIC CHANGE 1" DECREASE  
USE DIAGRAM ONLY TO OBTAIN NUMERICAL VALUES TO DETERMINE MAGNETIC NORTH LINE. CONNECT THE PIVOT POINT "M" ON THE SOUTH EDGE OF THE MAP WITH THE VALUE OF THE ANGLE BETWEEN GRID AND MAGNETIC NORTH, AS PLOTTED ON THE GRAPHIC SCALE AT THE NORTH EDGE OF THE MAP.

MIDWAY PEAK SW, CALIF.  
N3500-W1937.5/7.5

(MC PHERSON PEAK)  
1:62500

(CUYAMA RANCH)

1953  
HISTORICAL FILE  
TOPOGRAPHIC DIVISION