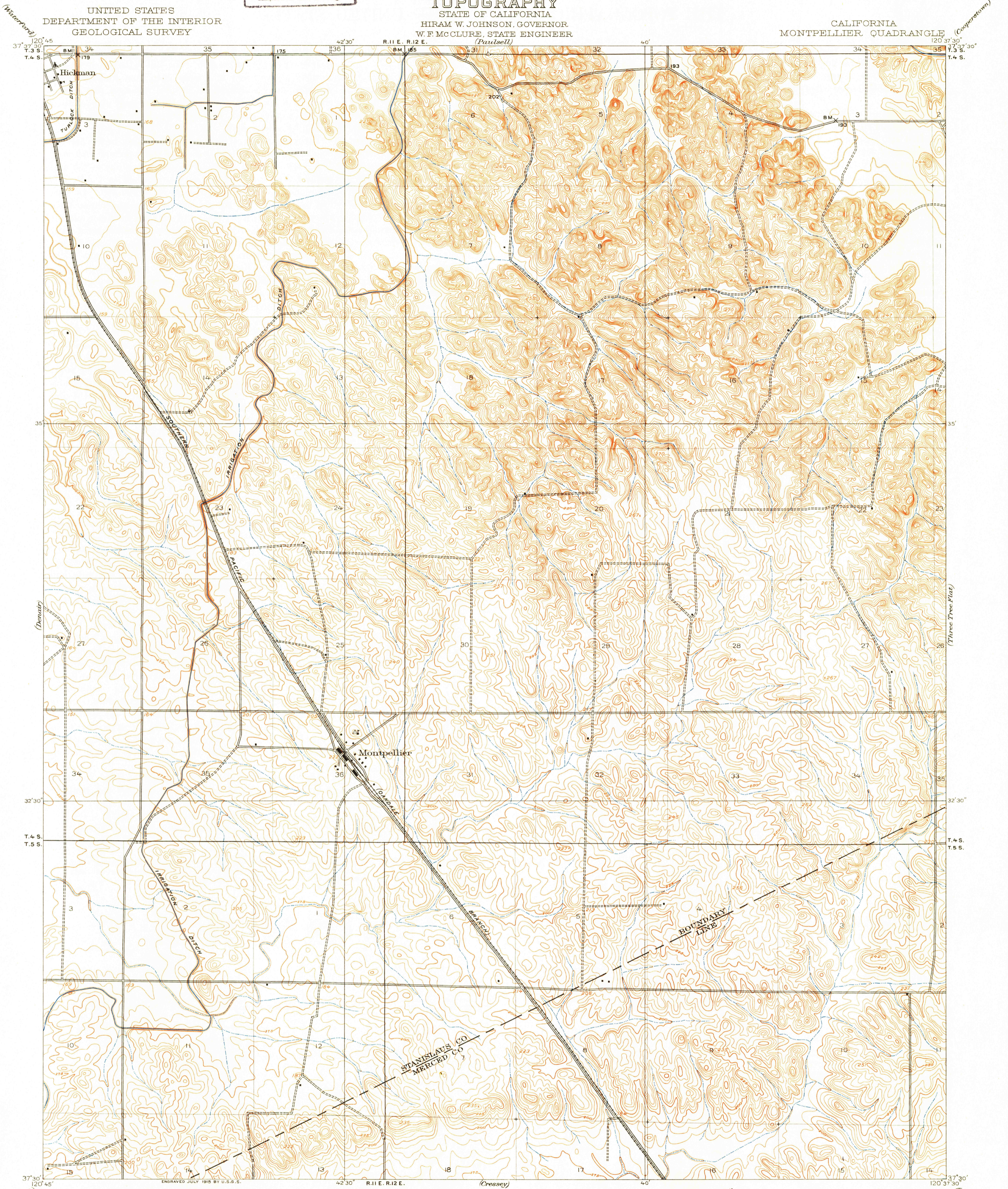


U. S. G. S.  
FILE COPY  
Inspection and Editing.

UNITED STATES  
DEPARTMENT OF THE INTERIOR  
GEOLOGICAL SURVEY

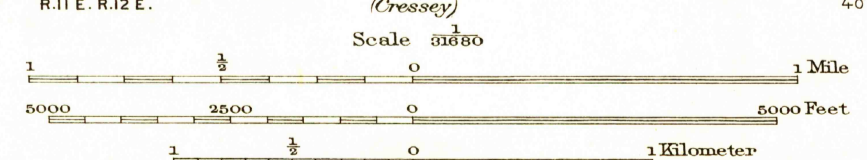
TOPOGRAPHY  
STATE OF CALIFORNIA  
HIRAM W. JOHNSON, GOVERNOR  
W. F. MCCLURE, STATE ENGINEER  
(Parissell)

CALIFORNIA  
MONTPELLIER QUADRANGLE



R. B. Marshall, Chief Geographer.  
Geo. R. Davis, Geographer in charge.  
Topography by Duncan Hannegan and W. N. Vance.  
Control by C. F. Urquhart and D. S. Birkett.  
Surveyed in 1913.

Vance
Hannegan



17 4'  
TRUE NORTH  
MAGNETIC NORTH  
APPROXIMATE MEAN  
DECLINATION 1913.

Edition of 1916.

MONTPELLIER, CAL.

USGS  
Historical File  
Topographic Division

U. S. G. S.  
FILE COPY  
Inspection and Editing.

OCT 20 1949 1065