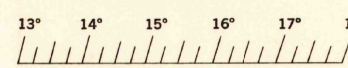


FOX MOUNTAIN

CALIFORNIA
MORRO HILL QUADRANGLE
GRID ZONE "G"

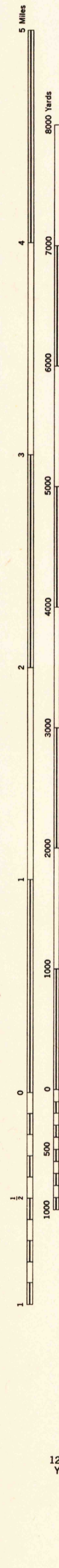
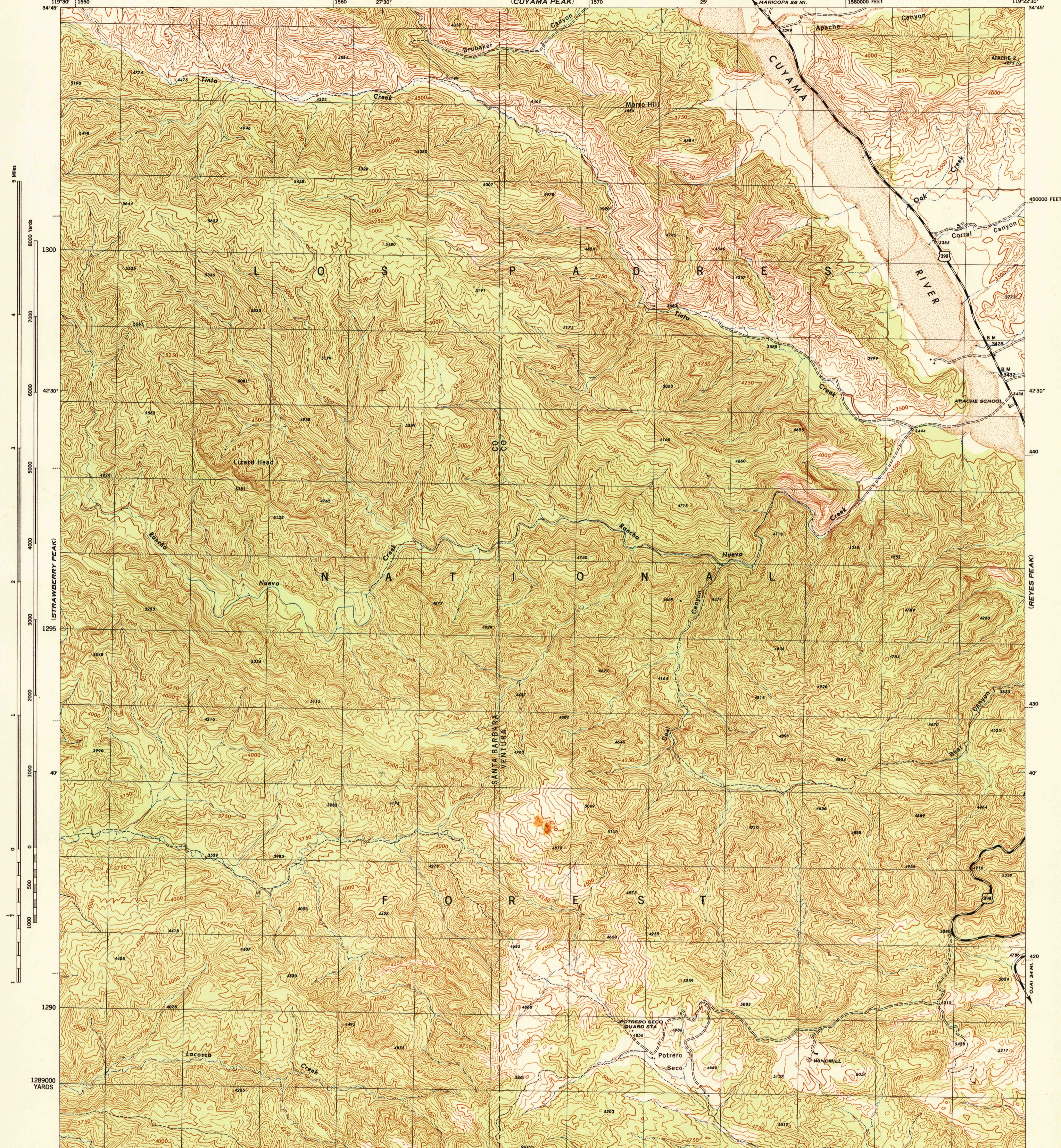
WAR DEPARTMENT
CORPS OF ENGINEERS, U. S. ARMY

FIRST EDITION - 29E 2



CALIFORNIA
MORRO HILL QUADRANGLE
7.5 MINUTE SERIES
GRID ZONE "G"

LAPACHE CANYON



1151000 YARDS
 FIRST EDITION (29E 1) 1944. REVISED (29E 2) 1944.
 Prepared by U. S. Department of Agriculture, Forest Service, under the direction of the Chief of Engineers, U. S. Army, 1943.
 Control by U. S. Coast and Geodetic Survey, U. S. Geological Survey and U. S. Forest Service.
 Topography by U. S. Forest Service stereophotogrammetric methods (KEK plotter).
 Photography by U. S. Forest Service, 1942.
 Polyconic Projection, 1927 North American Datum.

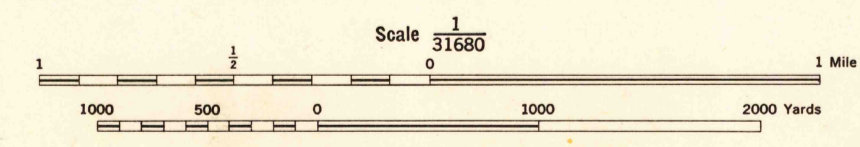
ROAD CLASSIFICATION

Dependable hard-surface, heavy-duty road. Loose-surface graded, dry weather road. U. S. Route **160**

Secondary, hard-surface, all-weather road. Dirt road. State Route **30**

More than two lanes indicated by note along road with tick at point of change. **3 LANE 2 LANE**

THIS MAP COMPLIES WITH THE NATIONAL STANDARD MAP ACCURACY REQUIREMENTS.

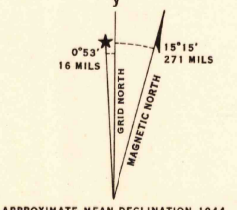


Scale $\frac{1}{31680}$

CONTOUR INTERVAL 50 FEET
DATUM IS 1929 MEAN SEA LEVEL

ONE THOUSAND YARD GRID COMPUTED FROM "GRID SYSTEM FOR PROGRESSIVE MAPS IN THE U. S." ZONE G, U. S. C. & G. S. SPECIAL PUBLICATION NO. 59
TEN THOUSAND FOOT GRID BASED ON CALIFORNIA PLANE COORDINATE SYSTEM, ZONE 5
THE LAST THREE DIGITS OF THE GRID NUMBERS ARE OMITTED

NOTE: OFFICERS USING THIS MAP WILL HAVE NEARER CORRECTIONS AND NOTATIONS WHICH COME TO THEIR ATTENTION AND MAIL DIRECT TO THE CHIEF OF ENGINEERS, WASHINGTON, D. C.



APPROXIMATE MEAN DECLINATION 1944
ANNUAL MAGNETIC CHANGE 1' DECREASE

USE DIAGRAM ONLY TO OBTAIN NUMERICAL VALUES TO DETERMINE MAGNETIC NORTH LINE. CONNECT THE PIVOT POINT "P" ON THE SOUTH EDGE OF THE MAP WITH THE VALUE OF THE ANGLE BETWEEN GRID AND MAGNETIC NORTH, AS PLOTTED ON THE DEGREE SCALE AT THE NORTH EDGE OF THE MAP.

USGS
Historical File
Topographic Division

28TH ENGINEER REPRODUCTION PLANT, PORTLAND, OREGON
AMS NO. 120359
EDITION OF 1944

MORRO HILL, CALIF.
N3437.5-W11922.5/7.5

U. S. G. S.
FILE COPY

NAME CHANGED TO / RANCHO NUEVO CREEK (1:24000)