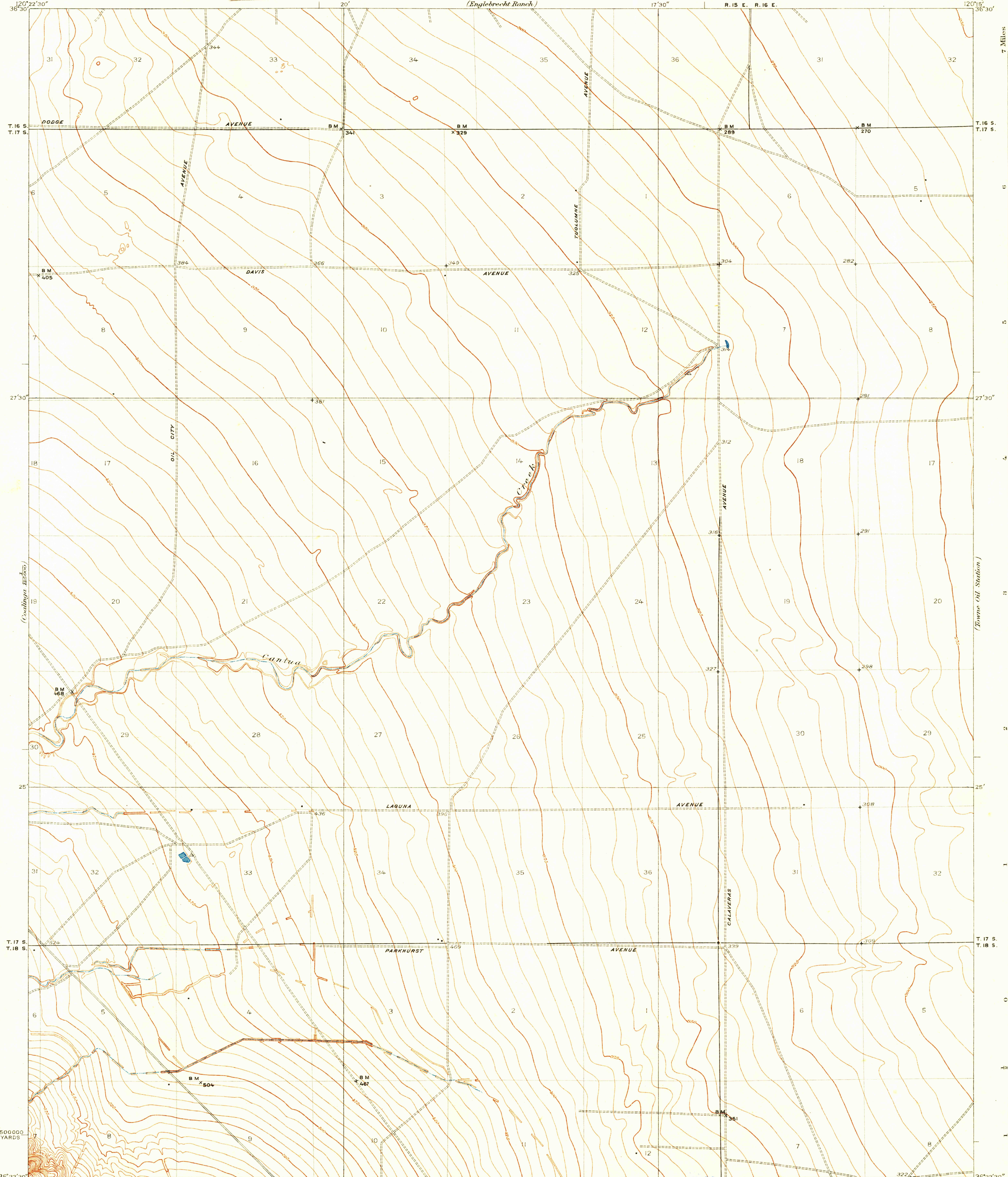


U. S. G. S.  
FILE COPY  
Inspection and Editing.

DEPARTMENT OF THE INTERIOR  
U.S. GEOLOGICAL SURVEY

STATE OF CALIFORNIA  
JAMES ROLPH, JR., GOVERNOR  
WALTER E. GARRISON, DIRECTOR OF PUBLIC WORKS  
EDWARD HYATT, STATE ENGINEER

CALIFORNIA  
(FRESNO COUNTY)  
MOUTH OF CANTUA CREEK QUADRANGLE (San Joaquin)



Topography by J.L. Lewis and L.O. Newsome  
Control by U.S. Geological Survey  
Surveyed in 1927

TRUE NORTH  
MAGNETIC NORTH  
APPROXIMATE MEAN  
DECLINATION, 1928

Scale 1:31680  
1 Mile  
5000 Feet  
1 Kilometer  
Contour interval 5 feet  
Datum is mean sea level

USGS  
Historical File  
Topographic Division

U. S. G. S.  
FILE COPY  
Inspection and Editing.

changed to Tres Picos Farms  
MOUTH OF CANTUA CREEK, CALIF.  
Edition of 1931

NOV 18 1931 (1970) 1970