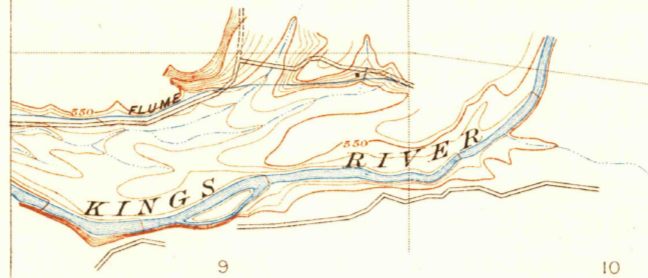


U.S.G.S.
FILE COPY
Inspection and Editing



THIS AREA IS SHOWN ON THE MAP OF DINUBA
QUADRANGLE, SURVEYED IN 1916, SCALE 1:125,000

T. 12 S.
T. 13 S.

1550 000
YARDS

36°45'

(Round Mountain)

(Dinuba 125600)



Topography by M.J. Gleissner and W.R. Chenoweth,
Surveyed in 1920.



Contour interval 5 feet.
Datum is mean sea level.

USGS
Historical File
Topographic Division
U.S.G.S.
FILE COPY
Inspection and Editing

Polyconic projection, North American datum.
5000 yard grid based upon U.S. zone system, G

ORANGEDALE SCHOOL, CALIF.
Edition of 1923,
reprinted 1928

NOV 1 - 1928 (940)