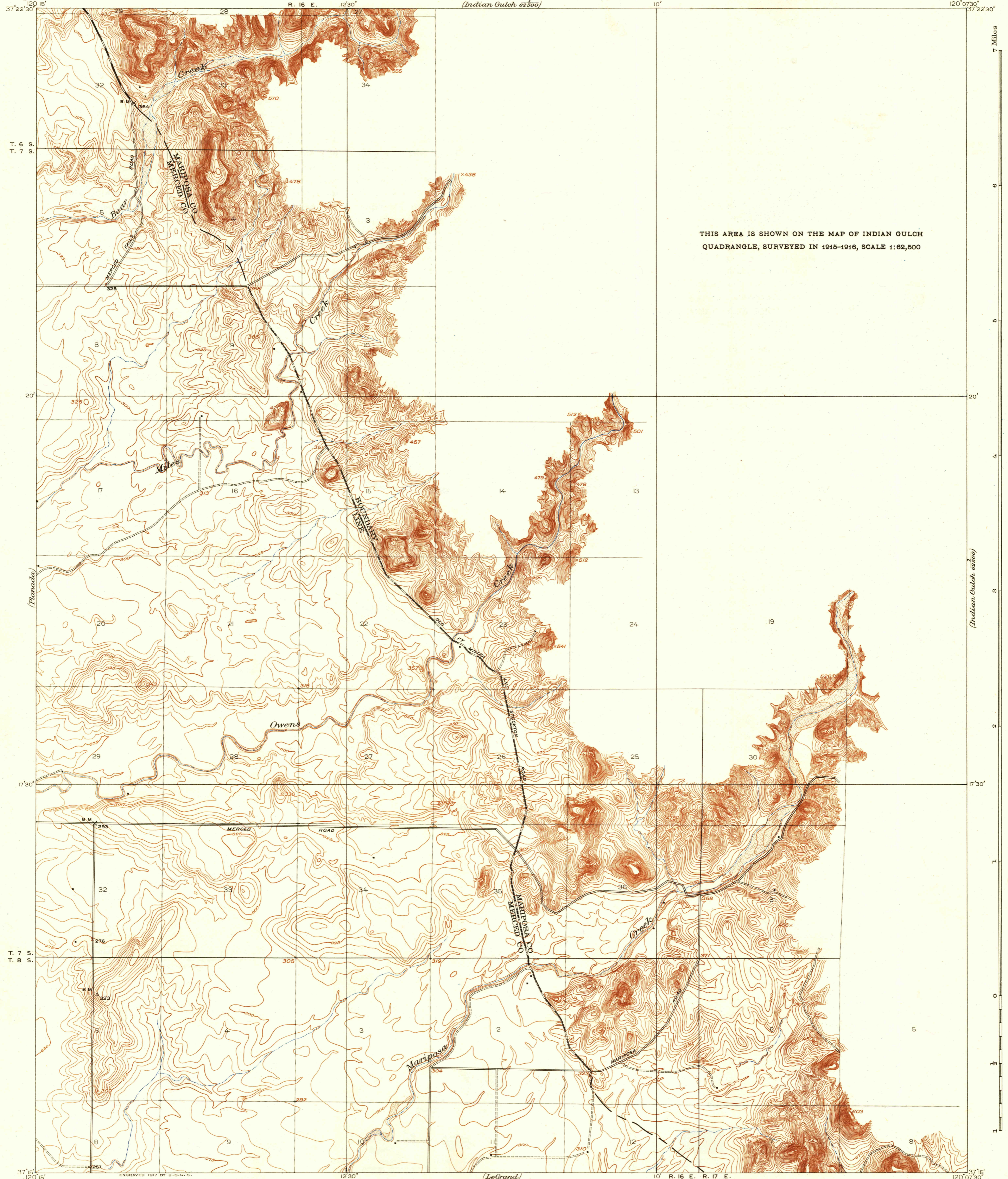


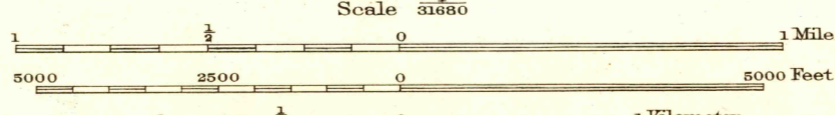
U.S.G.S.
FILE COPY
Inspection and Catalog



THIS AREA IS SHOWN ON THE MAP OF INDIAN GULCH
QUADRANGLE, SURVEYED IN 1915-1916, SCALE 1:62,500

ENGRAVED 1917 BY U.S.G.S.

R.B. Marshall, Chief Geographer.
Geo. R. Davis, Geographer in charge.
Topography by E.P. Davis and J.H. LeFeaver.
Control by C.F. Unguhart and Roscoe Reeves.
Surveyed in 1915.



Contour interval 5 feet.
Datum is mean sea level.

TRUE NORTH
MAGNETIC NORTH
APPROXIMATE MEAN
DECLINATION 1918.

U.S.G.S.
Historical File
Topographic Division

CALIF.
OWENS CREEK

Edition of 1918, reprinted 1936
Polyconic projection, North American datum

(1715) 1715