

(PRIEST VALLEY
1:125,000)

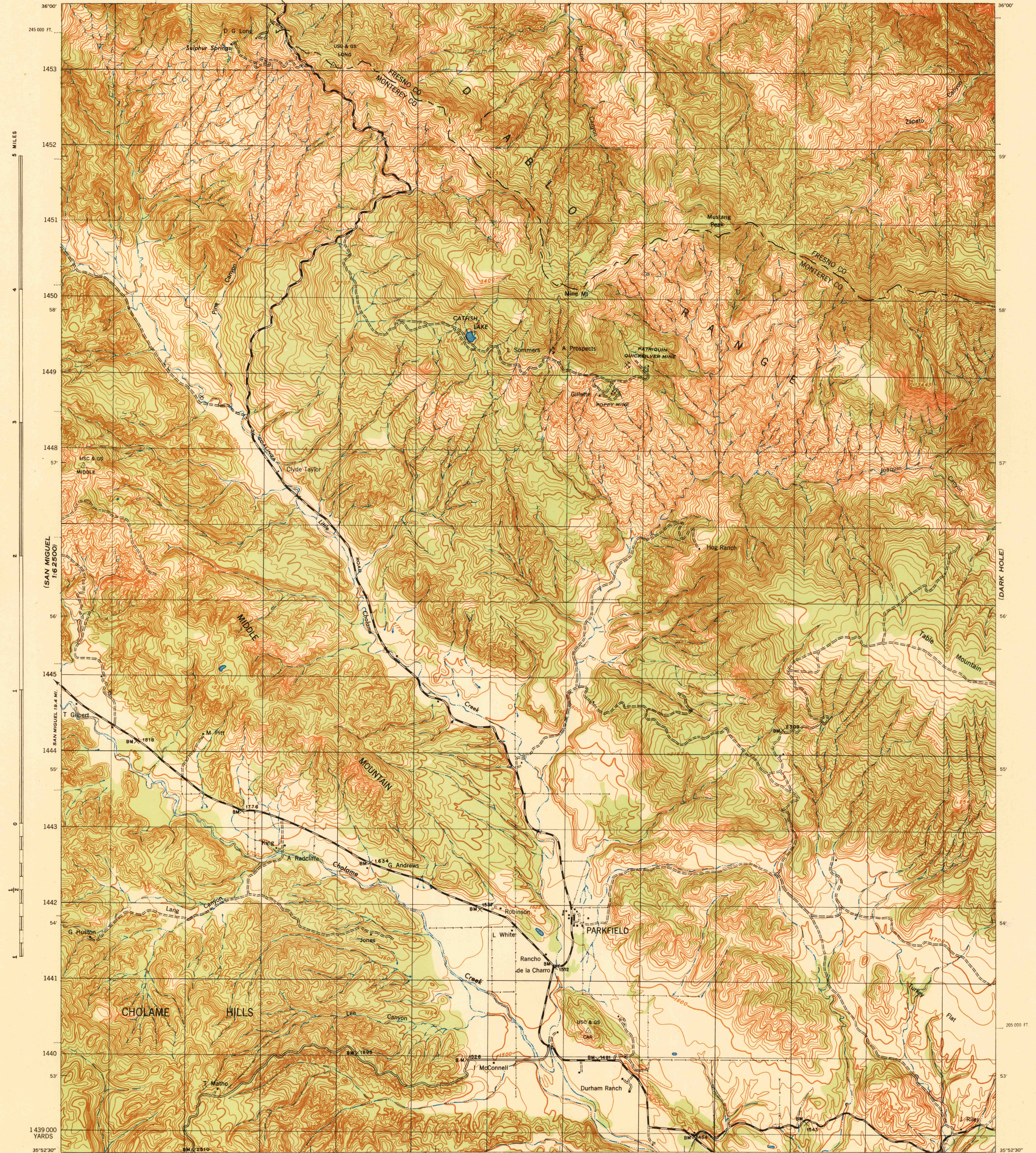
CALIFORNIA
PARKFIELD QUADRANGLE
GRID ZONE "G"

WAR DEPARTMENT
CORPS OF ENGINEERS, U. S. ARMY
(COALINGA 1:125,000)

14° 15° 16° 17° 18° 19°
FIRST EDITION-AMS 1

CALIFORNIA
PARKFIELD QUADRANGLE
GRID ZONE "G"

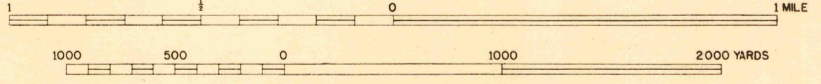
(COALINGA
1:125,000)



(SAN MIGUEL
1:62,500)

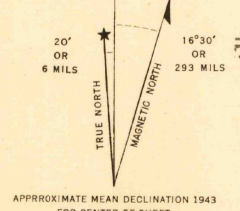
First Edition 1943.
Prepared under the direction of the Chief of Engineers, U. S. Army, 1942.
Compiled by Fairchild Aerial Surveys, Inc., Los Angeles, California.
Topography by Fairchild Aerial Surveys, Inc., Los Angeles, California,
by stereophotogrammetric process.
Control by U. S. Coast and Geodetic Survey
and Fairchild Aerial Surveys, Inc.
Aerial photography by Fairchild Aerial Surveys, Inc.
Polyconic Projection, North American Datum 1927.

Scale 1:31,680



CONTOUR INTERVAL 25 FEET
DATUM IS MEAN SEA LEVEL

THOUSAND YARD GRID COMPUTED FROM GRID SYSTEM FOR PROGRESSIVE MAPS
IN THE U. S. ZONE G, U. S. C. & G. S. SPECIAL PUBLICATION NO. 55
THE LAST THREE DIGITS OF THE GRID NUMBERS ARE OMITTED
CALIFORNIA STATE GRID ZONE 4, IS INDICATED BY DOTTED
TICKS OUTSIDE THE NEAT LINE AT 5,000 FOOT INTERVALS
NOTE: OFFICERS USING THIS MAP WILL MARK HEREON CORRECTIONS AND ADDITIONS WHICH COME
TO THEIR ATTENTION AND MAIL DIRECT TO THE CHIEF OF ENGINEERS, WASHINGTON, D. C.



USGS
Historical File
Topographic Division

ROAD CLASSIFICATION 1943

Dependable hard-surface,
heavy-duty road. U. S. Route 160

Loose-surface graded,
dry weather road. State Route 30

Secondary, hard surface,
all-weather road. 3 LANE | 4 LANE

More than two lanes indicated by tick along road with tick at point of change.

APPROXIMATE MEAN DECLINATION 1943
FOR CENTER OF SHEET
ANNUAL MAGNETIC CHANGE 1" DECREASE

Use diagram only to obtain numerical values. To determine
magnetic north line, connect the point "M" on the
south edge of the map with the value of the angle between
GRID NORTH and MAGNETIC NORTH, as plotted on the
degree scale at the north edge of the map.

PARKFIELD, CALIF.
N3552.5-W12022.5/7.5

(CHOLAME RANCH)