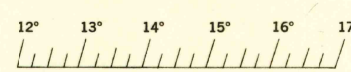


(WEST OF TEJON HILLS)

CALIFORNIA
PASTORIA CREEK QUADRANGLE
GRID ZONE "G"

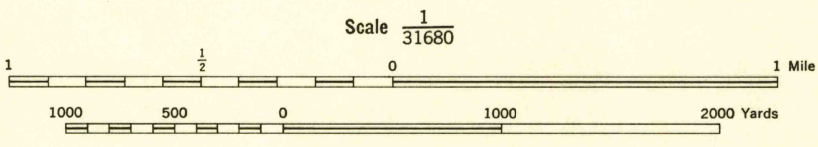
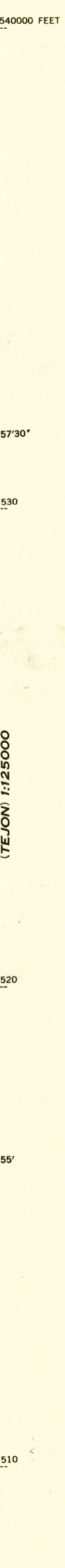
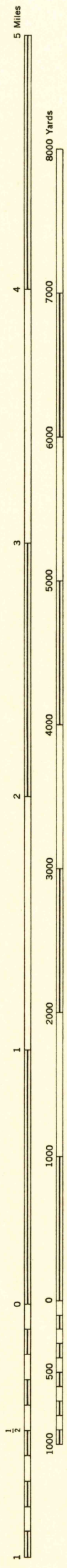
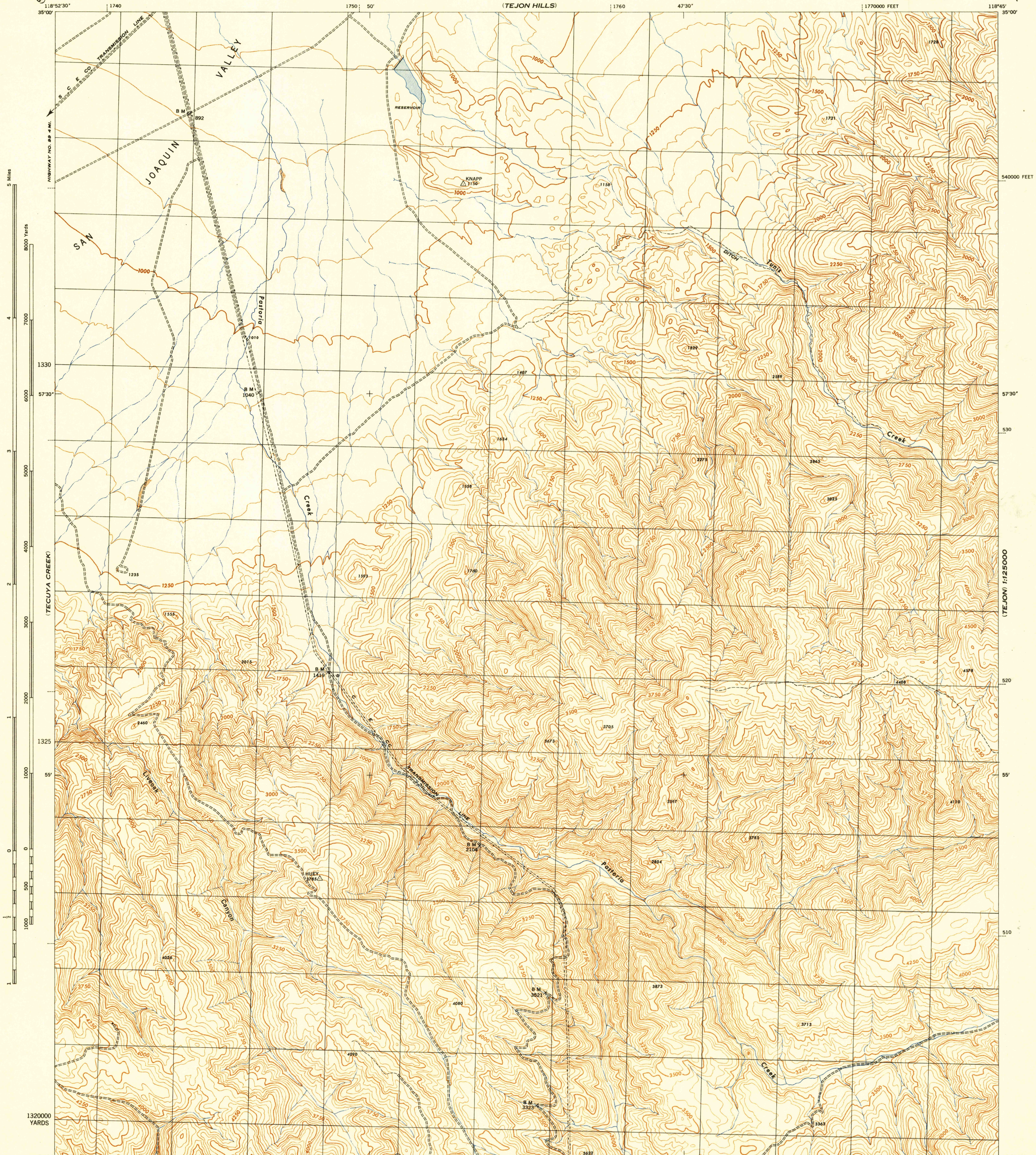
WAR DEPARTMENT
CORPS OF ENGINEERS, U. S. ARMY

FIRST EDITION - 29E 1



CALIFORNIA
PASTORIA CREEK QUADRANGLE
7.5 MINUTE SERIES
GRID ZONE "G"

(CALIENTE)
1:125000



CONTOUR INTERVAL 50 FEET
DATUM IS 1929 MEAN SEA LEVEL

ONE THOUSAND YARD GRID COMPUTED FROM "GRID SYSTEM FOR PROGRESSIVE MAPS IN THE U. S." ZONE G, U. S. C. & G. S. SPECIAL PUBLICATION NO. 59
TEN THOUSAND FOOT GRID BASED ON CALIFORNIA PLANE COORDINATE SYSTEM, ZONE 5
THE LAST THREE DIGITS OF THE GRID NUMBERS ARE OMITTED
NOTE: OFFICERS USING THIS MAP WILL MAKE NECESSARY CORRECTIONS AND ADJUSTMENTS WHICH COME TO THEIR ATTENTION AND WILL DIRECT TO "THE CHIEF OF ENGINEERS, WASHINGTON, D. C."

APPROXIMATE MEAN DECLINATION 1945
ANNUAL MAGNETIC CHANGE 1' DECREASE
USE DIAGRAM ONLY TO OBTAIN NUMERICAL VALUES TO DETERMINE MAGNETIC NORTH LINE. CONNECT THE POINT "P" ON THE SOUTH EDGE OF THE MAP WITH THE VALUE OF THE ANGLE BETWEEN GRID AND MAGNETIC NORTH, AS PLOTTED ON THE DEGREE SCALE AT THE NORTH EDGE OF THE MAP.

25TH ENGINEER REPRODUCTION PLANT, PORTLAND, OREGON
AMS NO. 120364
1945

PASTORIA CREEK, CALIF.
N3452.5-W11845/7.5

FIRST EDITION (29E 1) 1945
Prepared by U. S. Department of Agriculture, Forest Service, under the direction of the Chief of Engineers, U. S. Army, 1943.
Control by U. S. Coast and Geodetic Survey, U. S. Geological Survey and U. S. Forest Service.
Topography by U. S. Forest Service stereophotogrammetric methods (KEK plotter).
Photography by U. S. Forest Service, 1942.
Polyconic Projection, 1927 North American Datum.

ROAD CLASSIFICATION
Dependable hard-surface, heavy-duty road. Loose-surface graded, dry weather road. U. S. Route 2160
Secondary, hard-surface, all-weather road. Dirt road. State Route 30
More than two lanes indicated by note along road with tick at point of change. 3 LANE 14 LANE
THIS MAP COMPLIES WITH THE NATIONAL STANDARD MAP ACCURACY REQUIREMENTS.

USCS
Historical File
Topographic Division

U.S.G.S.
FILE COPY
TOPOGRAPHIC DIVISION

768 printing