

U.S.G.S.
FILE COPY
Inspection and Editing

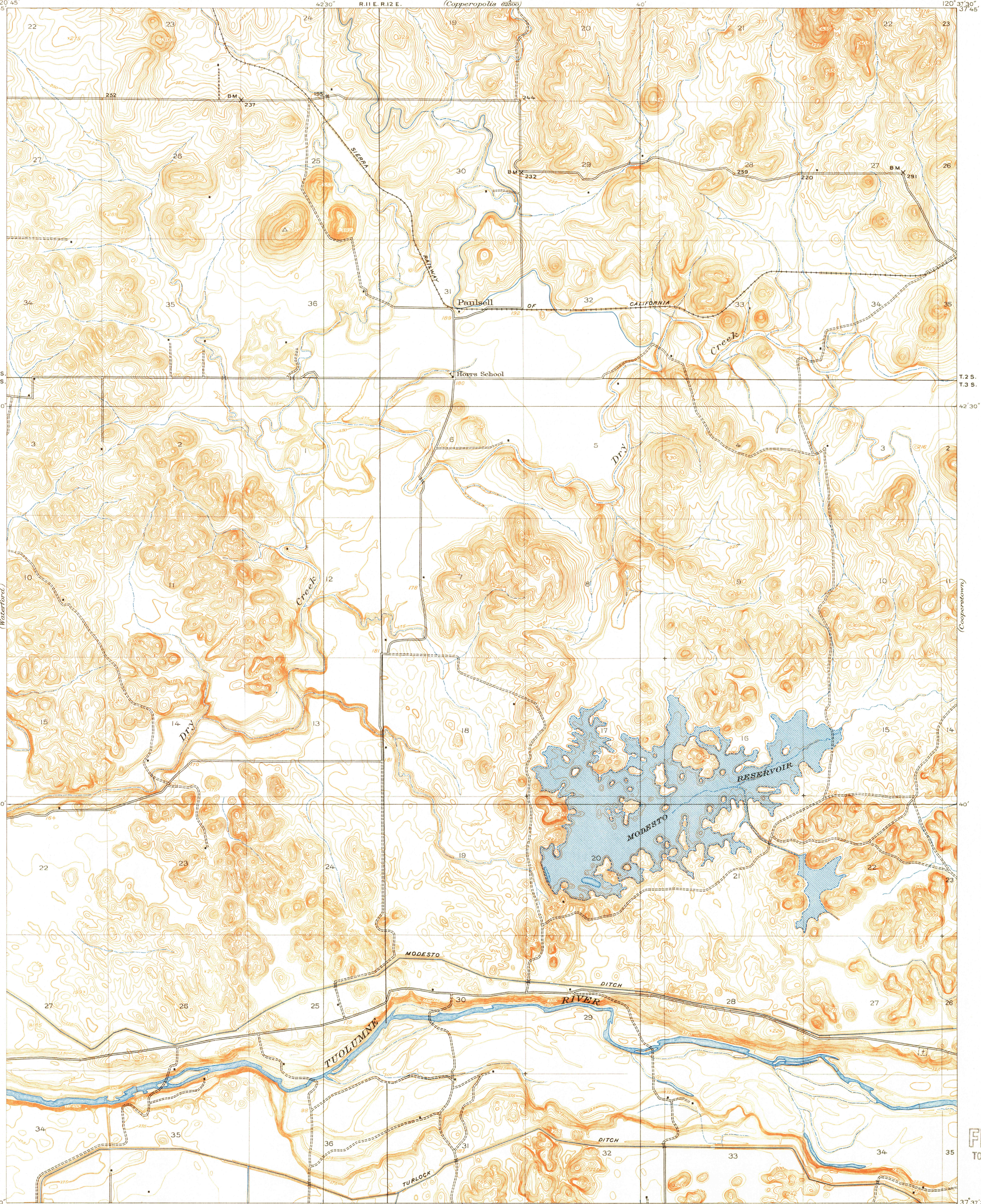
TOPOGRAPHY

U.S.G.S.
FILE COPY
TOPOGRAPHIC DIVISION

UNITED STATES
DEPARTMENT OF THE INTERIOR
GEOLOGICAL SURVEY

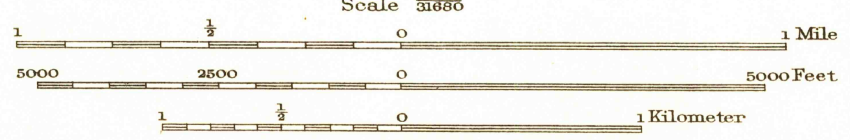
STATE OF CALIFORNIA
HIRAM W. JOHNSON, GOVERNOR
W. F. MCCLURE, STATE ENGINEER
(Copperopolis 8800)

CALIFORNIA
(STANISLAUS COUNTY)
PAULSELL QUADRANGLE



R. B. Marshall, Chief Geographer.
Geo. R. Davis, Geographer in charge.
Topography by J. B. Leavitt and F. A. Danforth.
Control by C. F. Urquhart and D. S. Birkett.
Surveyed in 1913.

Leavitt
Danforth



APPROXIMATE MEAN
DECLINATION 1913

Edition of 1915.

SURVEYED IN COOPERATION WITH THE STATE OF CALIFORNIA.

USGS
Historical Files
Topographic Division

U.S.G.S.
FILE COPY
Inspection and Editing

PAULSELL