

BUENA VISTA HILLS

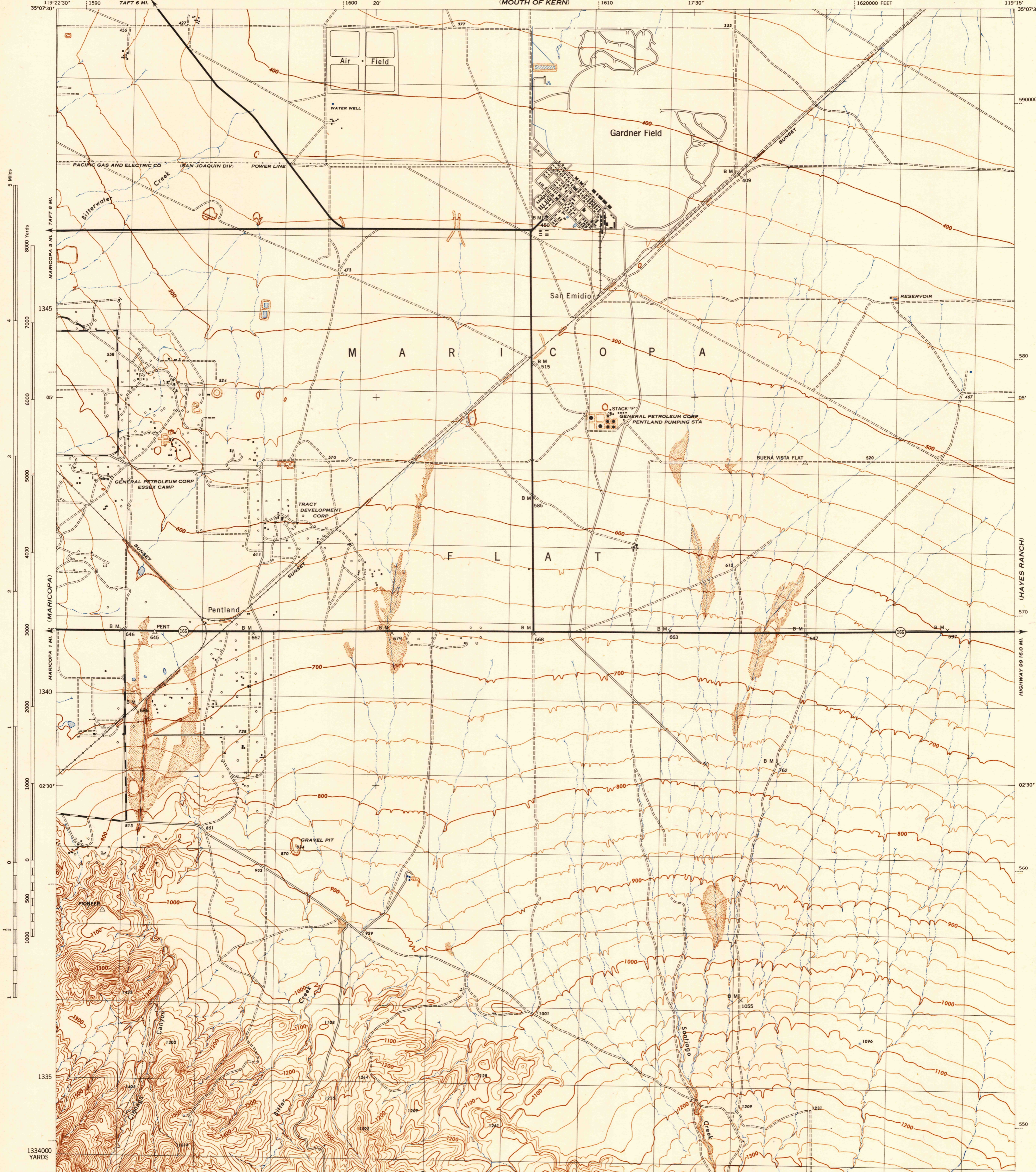
CALIFORNIA  
PENTLAND QUADRANGLE  
GRID ZONE "G"

WAR DEPARTMENT  
CORPS OF ENGINEERS, U. S. ARMY

FIRST EDITION - 29E 2  
13° 14' 15' 16' 17' 18'

CALIFORNIA  
PENTLAND QUADRANGLE  
7.5 MINUTE SERIES  
GRID ZONE "G"

(MILLUX)



5 Miles  
8000 Yards  
7000  
6000  
5000  
4000  
3000  
2000  
1000  
0  
500  
1000  
1335  
1334000 YARDS

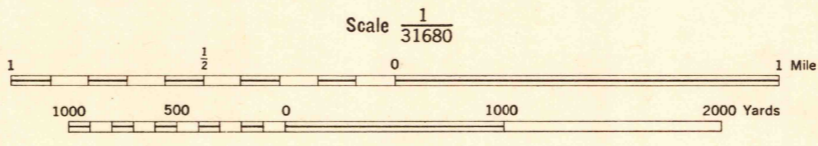
590000 FEET  
580  
05'  
570  
02'30"  
560  
550

(BALLINGER CANYON)

1163000 YARDS  
FIRST EDITION (29E 1) 1944 REVISED (29E 2) 1945  
Prepared by U. S. Department of Agriculture, Forest Service, under the direction of the Chief of Engineers, U. S. Army, 1943.  
Control by U. S. Coast and Geodetic Survey, U. S. Geological Survey and U. S. Forest Service.  
Topography by U. S. Geological Survey, 1930, 1931 and U. S. Forest Service, 1942.  
Photography and revised planimetry by U. S. Forest Service, 1942.  
Polyconic Projection, 1927 North American Datum.

ROAD CLASSIFICATION  
Dependable hard-surface, heavy-duty road. U. S. Route (160)  
Loose-surface graded, dry weather road.  
Secondary, hard-surface, all-weather road. Dirt road. State Route (30)  
More than two lanes indicated by note along road with tick at point of change. 3 LANE 1/2 LANE  
THIS MAP COMPLIES WITH THE NATIONAL STANDARD MAP ACCURACY REQUIREMENTS.

Contours by U. S. G. S.  
Contours by U. S. F. S.



CONTOUR INTERVAL 25 FEET  
DATUM IS 1929 MEAN SEA LEVEL

ONE THOUSAND YARD GRID COMPUTED FROM "GRID SYSTEM FOR PROGRESSIVE MAPS IN THE U. S. ZONE G, U. S. C. & G. S. SPECIAL PUBLICATION NO. 99 TEN THOUSAND FOOT GRID BASED ON CALIFORNIA PLANE COORDINATE SYSTEM, ZONE 5 THE LAST THREE DIGITS OF THE GRID NUMBERS ARE OMITTED  
NOTE: OFFICERS USING THIS MAP WILL MARK MERIDIAN CORRECTIONS AND SORTINGS WHICH COME TO THEIR ATTENTION AND MAIL DIRECT TO "THE CHIEF OF ENGINEERS, WASHINGTON, D. C."

APPROXIMATE MEAN DECLINATION 1945  
ANNUAL MAGNETIC CHANGE 1" DECREASE  
USE DIAGRAM ONLY TO OBTAIN NUMERICAL VALUES. TO DETERMINE MAGNETIC NORTH LINE, CONNECT THE POINT "P" ON THE SOUTH EDGE OF THE MAP WITH THE VALUE OF THE ANGLE BETWEEN GRID AND MAGNETIC NORTH, AS PLOTTED ON THE DEGREE SCALE AT THE NORTH EDGE OF THE MAP.

29TH ENGINEER REPRODUCTION PLANT, PORTLAND, OREGON  
ANS NO. 120165  
1945

PENTLAND, CALIF.  
N3500-W11915/7.5

USGS  
HISTORICAL FILE  
PHOTOGRAPHIC DIVISION