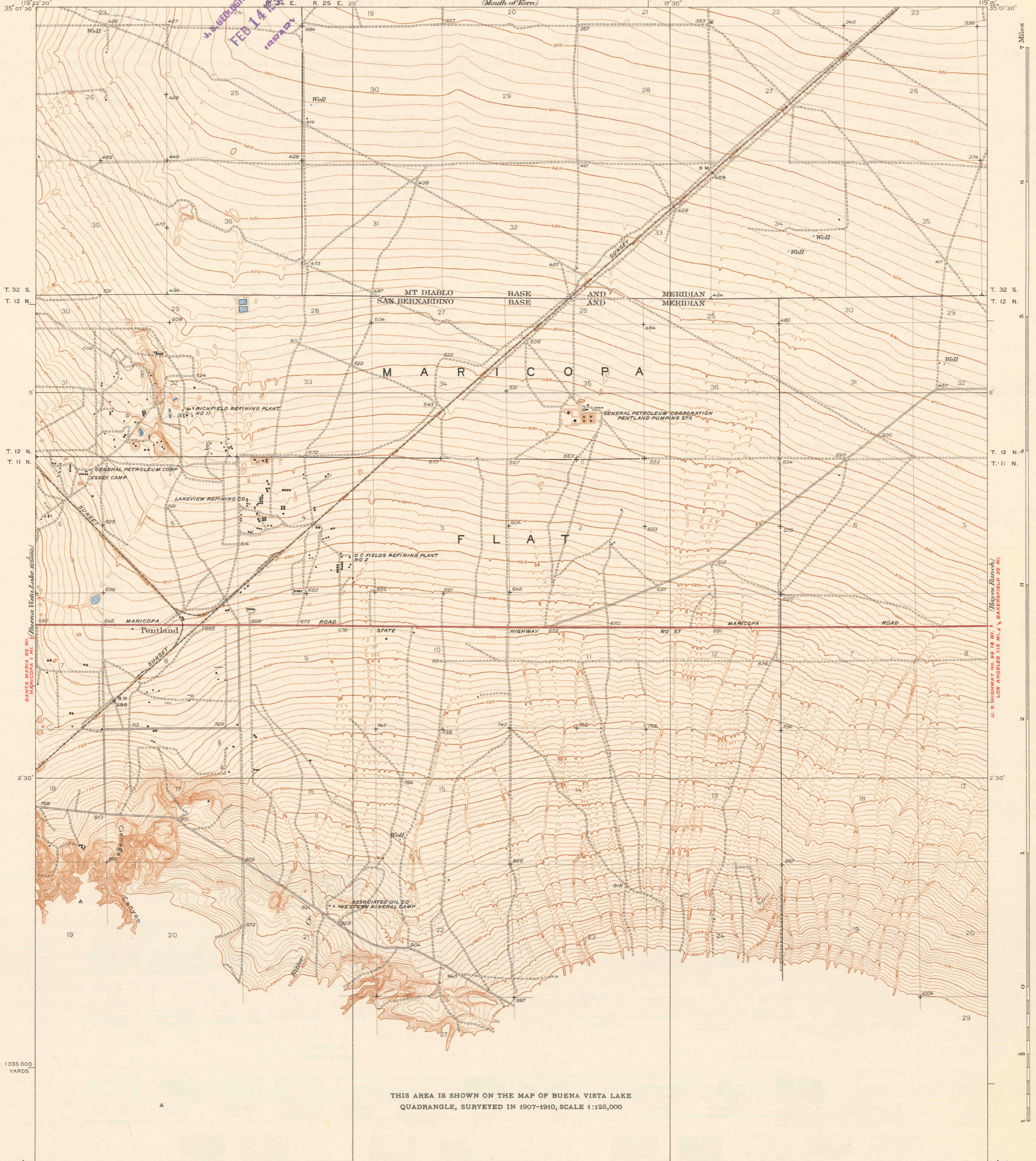


(Mouth of Kern)

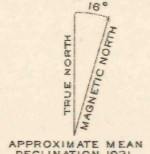


4-3460 (MINERAL SURVEY)
FEB 14 1935
1224 p.m.

THIS AREA IS SHOWN ON THE MAP OF BUENA VISTA LAKE
QUADRANGLE, SURVEYED IN 1907-1910, SCALE 1:125,000

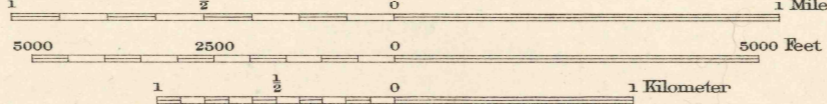
Topography by H.L. McDonald, S.C. Kain,
and F.H. Purdy
Control by U.S. Geological Survey
Surveyed in 1930-1931

(Mt. Pinos)
1:25000



(Mt. Pinos 1:25000)

Scale 1:6250



Contour interval 5 feet
Datum is mean sea level

Polyconic projection, 1927 North American datum
5000 yard grid based upon U.S. zone system, G

HARD IMPROVED SURFACED ROADS
OTHER MAIN TRAVELED ROADS
1933

PENTLAND, CALIF.
Edition of 1934

(Hayes Ranch)
U.S. HIGHWAY NO. 99 18 MI. N. LOS ANGELES 115 MI. S. BAKERSFIELD 35 MI. W.

(Mt. Pinos)
1:25000