

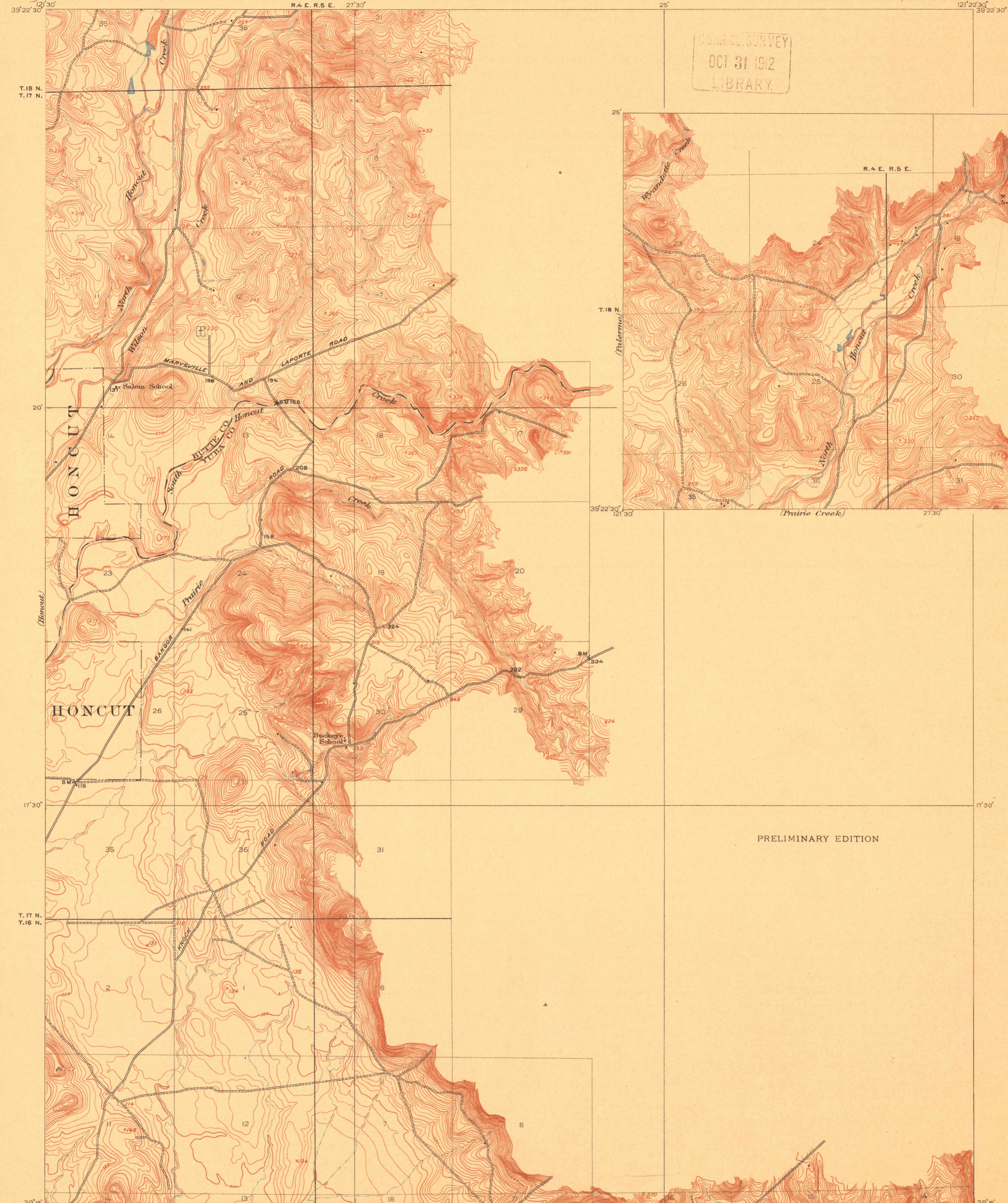
TOPOGRAPHY

STATE OF CALIFORNIA
J. N. GILLET, GOVERNOR
NATHANIEL ELLERY, STATE ENGINEER

CALIFORNIA
PRAIRIE CREEK QUADRANGLE

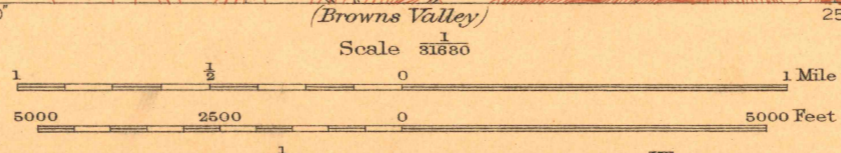
U.S. GEOLOGICAL SURVEY
GEORGE OTIS SMITH, DIRECTOR

U.S. GEOLOGICAL SURVEY
OCT 31 1912
LIBRARY.

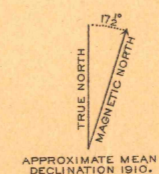


PRELIMINARY EDITION

(Tuba City)
R. B. Marshall, Chief Geographer.
T. C. Gardine, Geographer in charge.
Topography by W. H. Griffin.
Control by C. F. Urquhart and L. F. Biggs.
Surveyed in 1909-1910.
SURVEYED IN COOPERATION WITH THE STATE OF CALIFORNIA.



Contour interval 5 feet.
Datum is mean sea level.



Edition of Sep. 1912

PRAIRIE CREEK