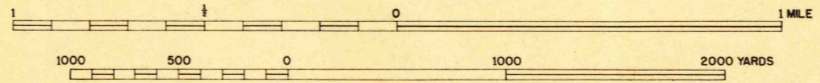


Prepared under the direction of the Chief of Engineers, U. S. Army, 1942.  
Compiled by Fairchild Aerial Surveys, Inc., Los Angeles, California.  
Topography by Fairchild Aerial Surveys, Inc., Los Angeles, California,  
by stereophotogrammetric process.  
Control by U. S. Coast and Geodetic Survey  
and Fairchild Aerial Surveys, Inc.  
Aerial photography by Fairchild Aerial Surveys, Inc.  
Polyconic Projection, North American Datum 1927.

Scale 1:31,680



CONTOUR INTERVAL 25 FEET  
DATUM IS MEAN SEA LEVEL

ONE THOUSAND YARD GRID COMPUTED FROM GRID SYSTEM FOR PROGRESSIVE MAPS  
IN THE U. S. ZONE G, U. S. C. & G. S. SPECIAL PUBLICATION NO. 59  
THE LAST THREE DIGITS OF THE GRID NUMBERS ARE OMITTED

THE STATE GRIDS ARE INDICATED FOR CALIFORNIA, ZONE 8 BY --- TICKS  
FOR CALIFORNIA, ZONE 4 BY - - - TICKS, OUTSIDE THE NEAT LINE AT 8 000 FOOT INTERVALS  
NOTE: OFFICERS USING THIS MAP WILL MARK MERIDON CORRECTIONS AND ADDITIONS WHICH COME  
TO THEIR ATTENTION AND MAIL DIRECT TO THE CHIEF OF ENGINEERS, WASHINGTON, D. C.

APPROXIMATE MEAN DECLINATION 1943  
FOR CENTER OF SHEET  
ANNUAL MAGNETIC CHANGE 7" DECREASE  
Use diagram only to obtain numerical values. To determine magnetic  
north line, connect the pivot point "P" on the south edge of the map  
with the value of the angle between GRID NORTH and MAGNETIC  
NORTH, as plotted on the degree scale at the south edge of the map.

ROAD CLASSIFICATION 1943  
Dependable hard-surface, heavy duty road. Loose-surface graded, dry weather road. U. S. Route 160  
Secondary, hard-surface, all-weather road. Dirt road. State Route 30  
More than two lanes indicated by note along road with tick at point of change. LANE 1 & 4 LANE

PYRAMID HILLS, CALIF.  
N3545-W12000/7.5

USGS  
Historical File  
Topographic Division