

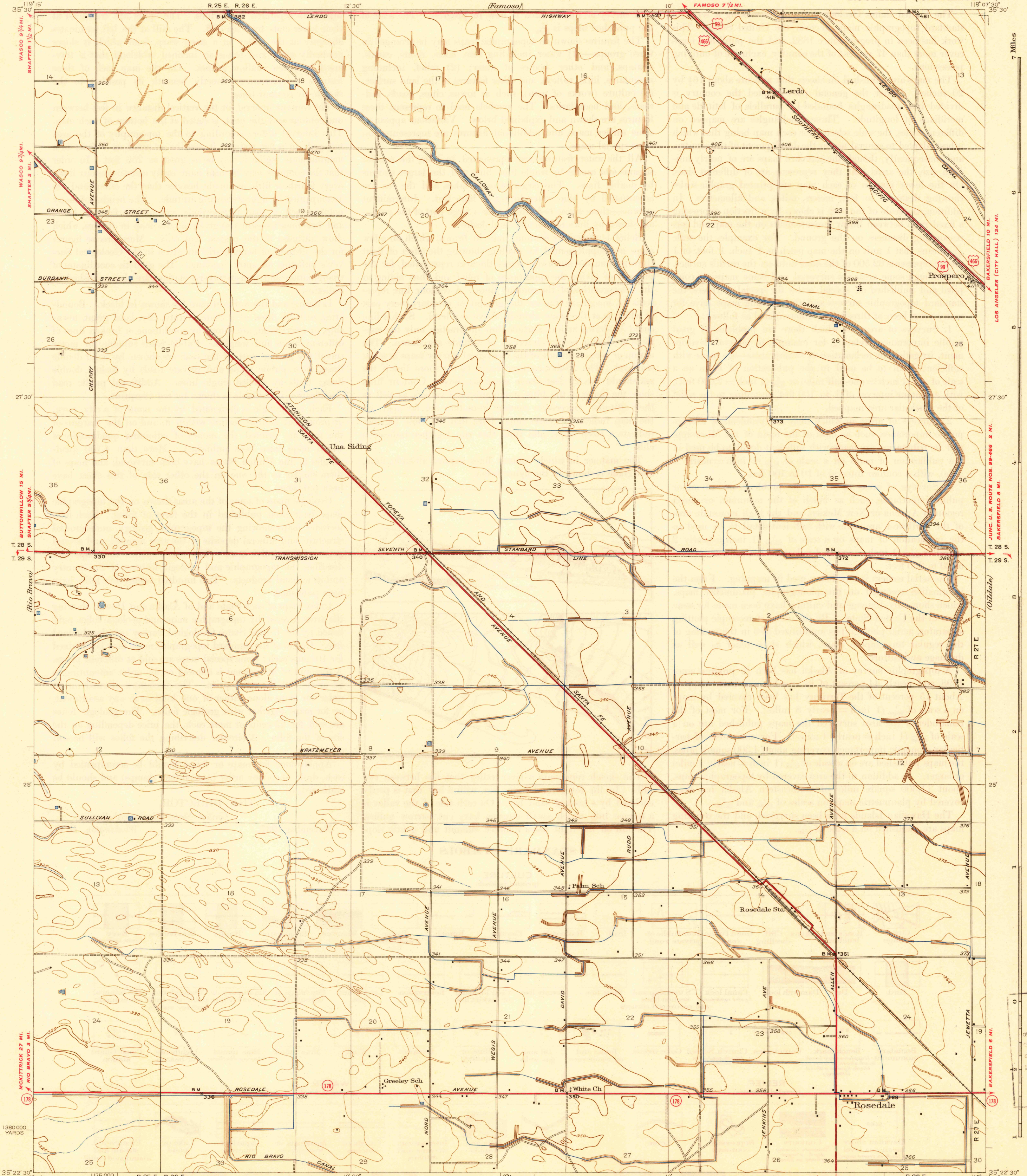
UNITED STATES  
DEPARTMENT OF THE INTERIOR  
GEOLOGICAL SURVEY

STATE OF CALIFORNIA  
REPRESENTED BY THE  
DIRECTOR OF PUBLIC WORKS  
(Ramoso)

U. S. G. S.  
FILE COPY  
Inspection and Mapping

CALIFORNIA  
(KERN COUNTY)  
ROSEDALE QUADRANGLE

(North of Oildale)



Topography by S.N. Stoner, F.A. Wuopio,  
and O.L. Wix  
Surveyed in 1929-1930

TRUE NORTH  
MAGNETIC NORTH  
APPROXIMATE MEAN  
DECLINATION, 1930

USGS  
Historical File  
Topographic Division

Scale 31680  
1 Mile  
5000 2500 0 5000 Feet  
1 Kilometer  
Contour interval 5 feet  
Datum is mean sea level

ROUTES USUALLY TRAVELED  
HARD IMPERVIOUS SURFACES  
OTHER SURFACE IMPROVEMENTS  
1941  
② U. S. ROUTE  
③ STATE ROUTE

Polynomic projection, 1927 North American datum  
5000 yard grid based upon U. S. zone system, G  
To join Wasco and Famoso maps  
use dotted projection corners

ROSEDALE, CALIF.  
Edition of 1933  
reprinted 1941  
N3522.5-W11907.5/75

U. S. G. S.  
FILE COPY  
Inspection and Mapping

NOV 25 1941

1925