

(MC PHERSON PK)
1:62500

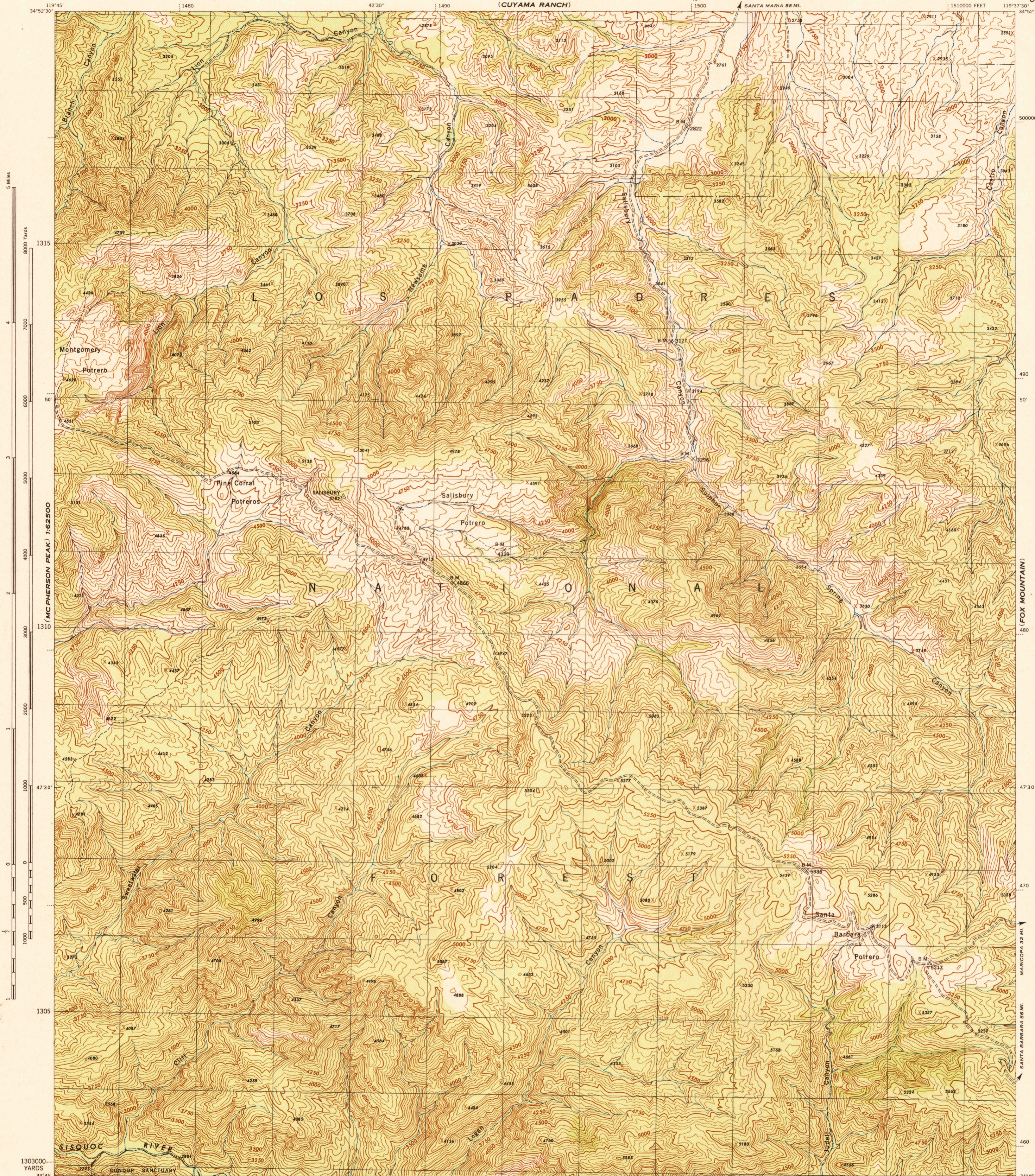
CALIFORNIA
SALISBURY POTRERO QUADRANGLE
GRID ZONE "G"

WAR DEPARTMENT
CORPS OF ENGINEERS, U. S. ARMY

FIRST EDITION - 29E 2
18° 14' 15' 16' 17' 18'

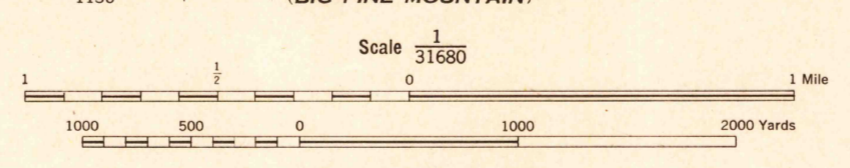
CALIFORNIA
SALISBURY POTRERO QUADRANGLE
7.5 MINUTE SERIES
GRID ZONE "G"

EAST OF
CUYAMA RANCH



(SAN RAFAEL
MTN.)
1:62500

Prepared by U. S. Department of Agriculture, Forest Service, under the direction of the Chief of Engineers, U. S. Army, 1943.
Control by U. S. Coast and Geodetic Survey, U. S. Geological Survey and U. S. Forest Service.
Topography by U. S. Forest Service stereophotogrammetric methods (Wernstedt Photograph).
Photography by U. S. Forest Service, 1942.
Polyconic Projection, 1927 North American Datum.



CONTOUR INTERVAL 50 FEET
DATUM IS 1929 MEAN SEA LEVEL

ONE THOUSAND YARD GRID COMPUTED FROM "GRID SYSTEM FOR PROGRESSIVE MAPS IN THE U. S." ZONE G, U. S. C. & G. S. SPECIAL PUBLICATION NO. 89
TEN THOUSAND FOOT GRID BASED ON CALIFORNIA PLANE COORDINATE SYSTEM, ZONE 5
THE LAST THREE DIGITS OF THE GRID NUMBERS ARE OMITTED
NOTE: OFFICERS USING THIS MAP WILL MAKE MERIDIAN CORRECTIONS AND NOTATIONS WHICH COME TO THEIR ATTENTION AND MAIL DIRECT TO THE CHIEF OF ENGINEERS, WASHINGTON, D. C.

APPROXIMATE MEAN DECLINATION 1944
ANNUAL MAGNETIC CHANGE 0.7" DECREASE
USE DIAGRAM ONLY TO OBTAIN NUMERICAL VALUES. TO DETERMINE MAGNETIC NORTH LINE, CONNECT THE PIVOT POINT "M" ON THE SOUTH EDGE OF THE MAP WITH THE VALUE OF THE ANGLE BETWEEN GRID AND MAGNETIC NORTH AS PLOTTED ON THE DEGREE SCALE AT THE NORTH EDGE OF THE MAP.

29TH ENGINEER REPRODUCTION PLANT, PORTLAND, OREGON
ANS NO. 120580
EDITION OF 1944

SALISBURY POTRERO, CALIF.
N3445-W11937.5/7.5

(STRAWBERRY PK)

USGS
TOPOGRAPHIC DIVISION
HISTORICAL FILE