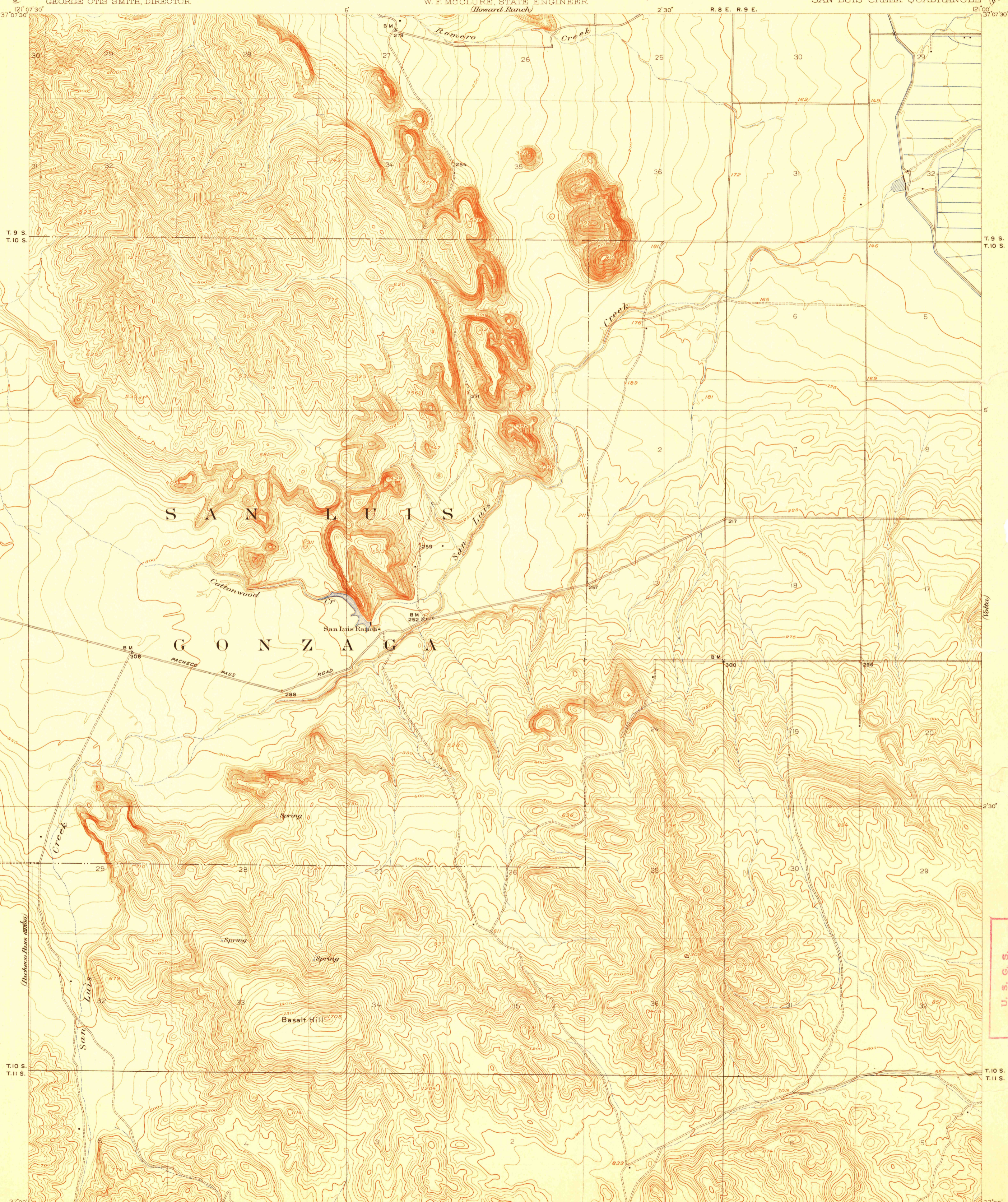


(Pacheco Pass)
22300

(Ingomar)
22300

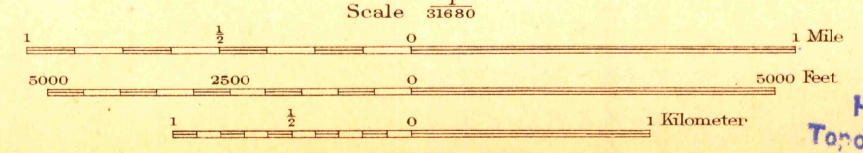


U. S. G. S.
FILE COPY
Inspection and Editing.

U. S. G. S.
FILE COPY

ENGRAVED 1921 BY U.S.G.S.
R.B. Marshall, Chief Geographer.
Geo. R. Davis, Geographer in charge.
Topography by Roscoe Reeves and N.E. Ballmer.
Control by Roscoe Reeves and C.F. Urquhart.
Surveyed in 1916.
SURVEYED IN COOPERATION WITH THE STATE OF CALIFORNIA.

Reeves
Ballmer



USGS
Historical File
Topographic Division

TRUE NORTH
MAGNETIC NORTH
APPROXIMATE MEAN
DECLINATION 1916

MAR 13 1922 2640

SAN LUIS CREEK
Edition of 1922.

(Queen Sabes)
22300

(Pacheco)
22300