

UNITED STATES
DEPARTMENT OF THE INTERIOR
GEOLOGICAL SURVEY

CALIFORNIA EL CENTRO 108 MI.
SAN YSIDRO QUADRANGLE
7 1/2-MINUTE SERIES
(Jamaul 62300)

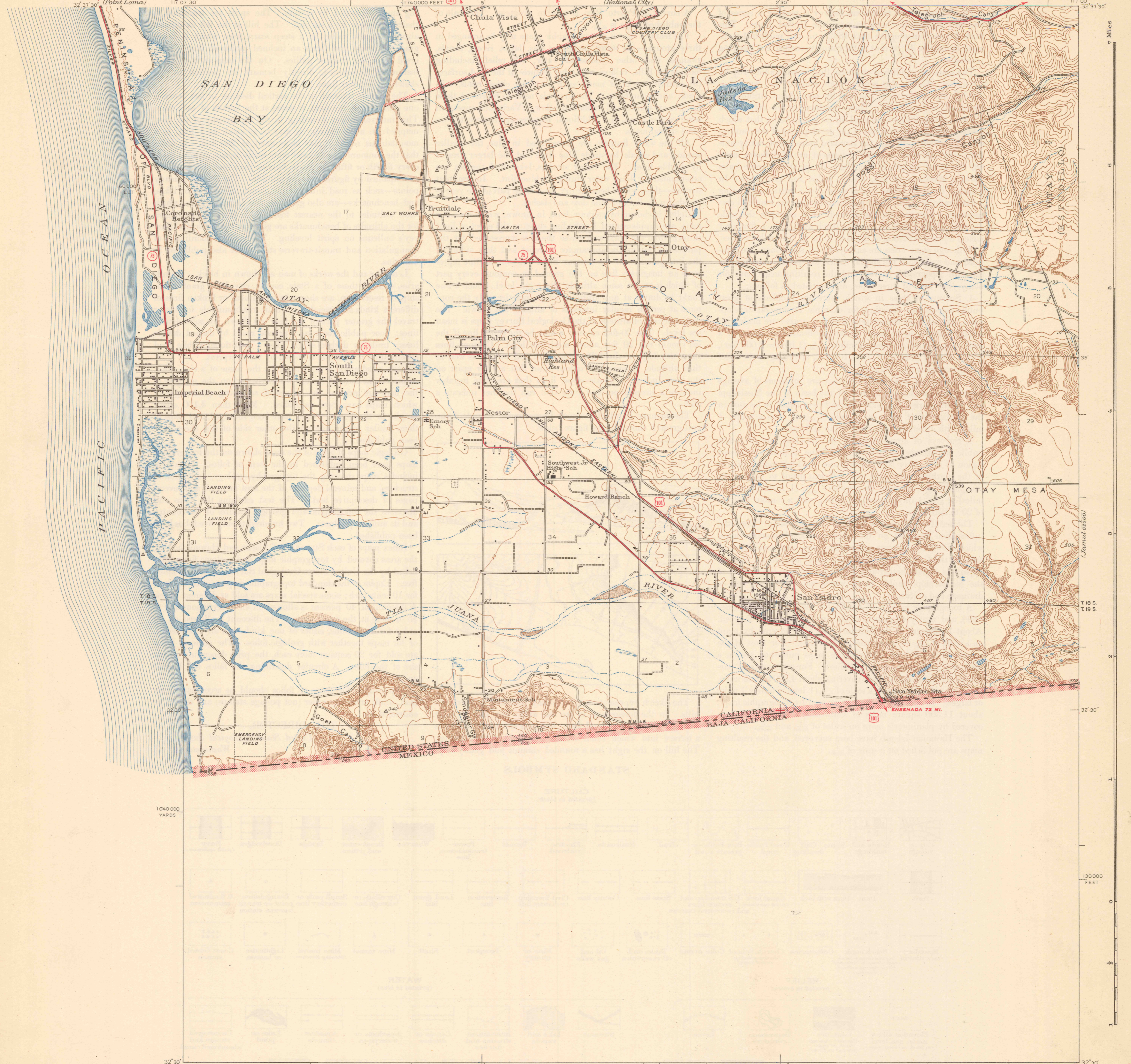
CORONADO 4.8 MI.
(Point Loma)

SAN DIEGO (CIVIC CENTER) 7.8 MI.
3.7 MI. NATIONAL CITY 3.4 MI.

SAN DIEGO (CIVIC CENTER) 8.8 MI.
CHULA VISTA 1 MI.

SAN DIEGO (CIVIC CENTER) 11.8 MI.
CHULA VISTA 3.5 MI.

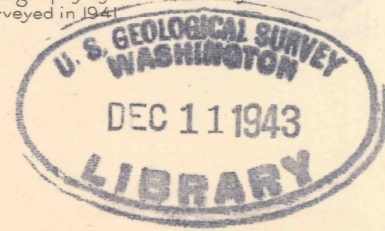
7 Miles



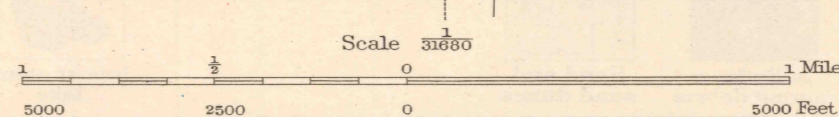
1040 000
YARDS

1400 000 YARDS

Topography by C.P. McKinley
Surveyed in 1942



TRUE NORTH
APPROXIMATE MEAN
DECLINATION, 1941



Scale 5880
Contour interval 25 feet
Datum is mean sea level

ROUTES USUALLY TRAVELED
HARD IMPERVIOUS SURFACES
OTHER SURFACE IMPROVEMENTS
U. S. ROUTE 1943 STATE ROUTE

Polyconic projection, 1927 North American datum
5000 yard grid based on U.S. zone system, 6
10000 foot grid based on California (6)
rectangular coordinate system

SAN YSIDRO, CALIF.
Edition of 1943

N3230-W1700/75