

59-S-III-E/2-SE/4

DEPARTMENT OF THE INTERIOR  
FRANKLIN K. LANE, SECRETARY

# TOPOGRAPHY

STATE OF CALIFORNIA  
HIRAM W. JOHNSON, GOVERNOR  
W. F. McCLURE, STATE ENGINEER  
(Sandy Mush)

Advance sheet.  
Subject to correction.

CALIFORNIA  
SANTA RITA BRIDGE QUADRANGLE

Turner Ranch

Lingard

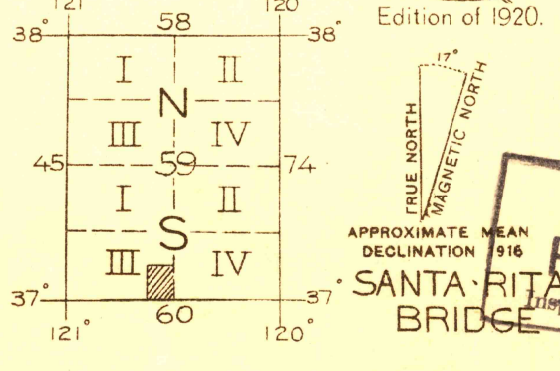


R. B. Marshall, Chief Geographer.  
Geo. R. Davis, Geographer in charge.  
Topography by N. E. Ballmer, and Roscoe Reeves.  
Control by Corps of Engineers, U. S. Army.  
L. F. Biggs and D. S. Birkett  
Surveyed in 1916.

SURVEYED IN COOPERATION WITH THE STATE OF CALIFORNIA



Contour interval 5 feet.  
Datum is mean sea level.



U. S. G. S.  
FILE COPY  
Inspection and Editing.

CALIF.