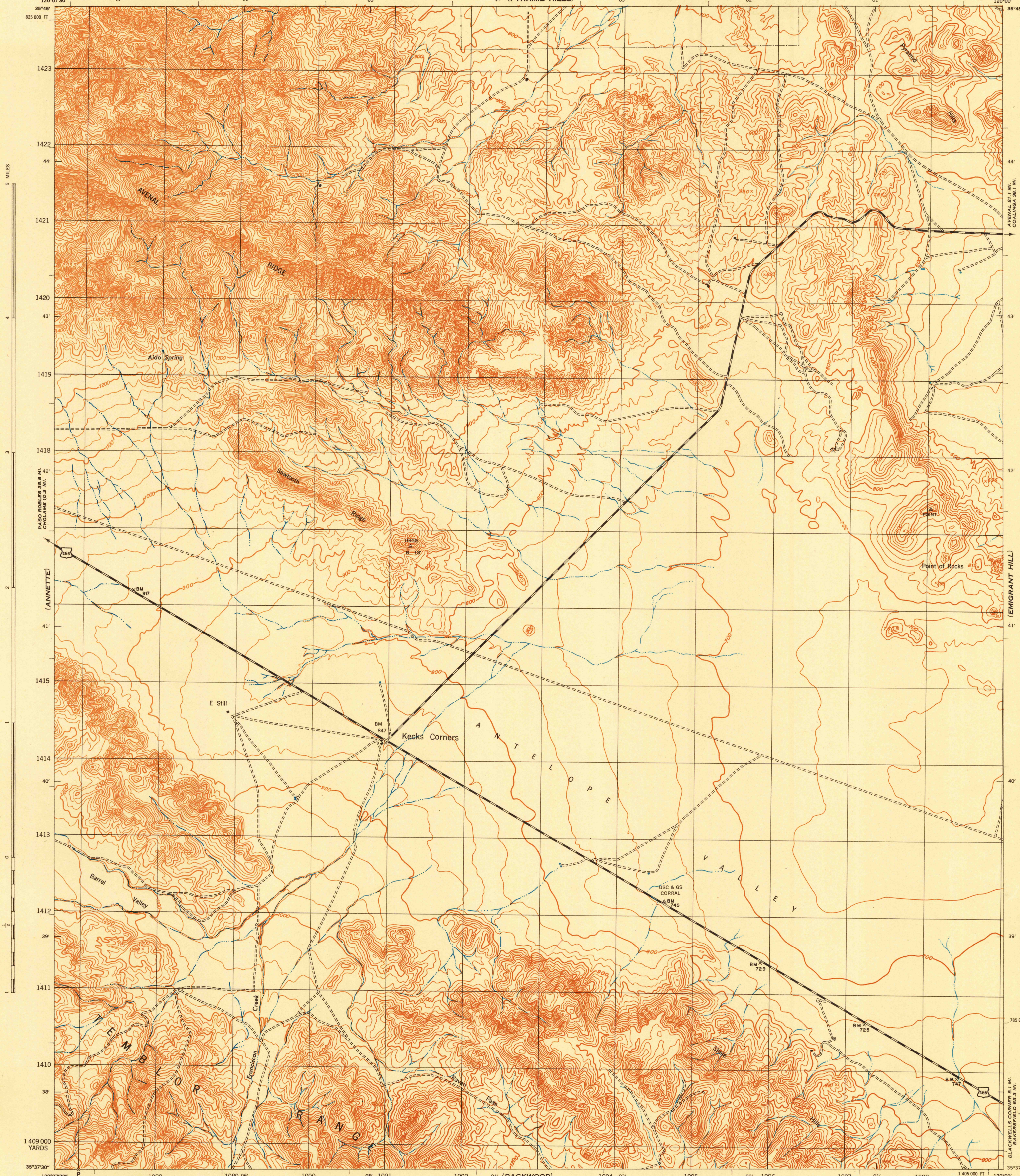


CALIFORNIA  
KERN COUNTY  
SAWTOOTH RIDGE QUADRANGLE  
GRID ZONE "G"

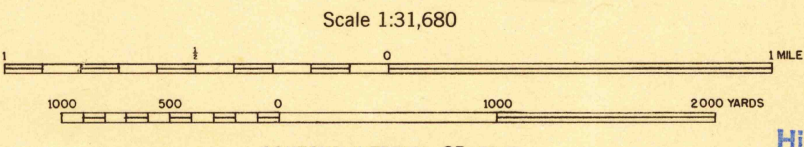
WAR DEPARTMENT  
CORPS OF ENGINEERS, U. S. ARMY

CALIFORNIA  
KERN COUNTY  
SAWTOOTH RIDGE QUADRANGLE  
GRID ZONE "G"

FIRST EDITION - AMS 1



1 087 000 YARDS  
First Edition 1943  
Prepared under the direction of the Chief of Engineers, U. S. Army, 1942.  
Compiled by Fairchild Aerial Surveys, Inc., Los Angeles, California.  
Topography by Fairchild Aerial Surveys, Inc., Los Angeles, California,  
by stereophotogrammetric process.  
Control by U. S. Coast and Geodetic Survey  
and Fairchild Aerial Surveys, Inc.  
Aerial photography by Fairchild Aerial Surveys, Inc.  
Polyconic Projection, North American Datum 1927.



ROAD CLASSIFICATION 1943  
Dependable hard-surface, heavy duty road. Loose-surface graded, dry weather road. U. S. Route 160  
Secondary, hard-surface all-weather road. Dirt road. State Route 30  
More than two lanes indicated by note along road with tick at point of change. 3 LANE | 4 LANE

CONTOUR INTERVAL 25 FEET  
DATUM IS MEAN SEA LEVEL  
ONE THOUSAND YARD GRID COMPUTED FROM "GRID SYSTEM FOR PROGRESSIVE MAPS IN THE U. S." ZONE "G", U. S. C. & G. S. SPECIAL PUBLICATION NO. 59  
THE LAST THREE DIGITS OF THE GRID NUMBERS ARE OMITTED  
CALIFORNIA STATE GRID ZONE "G" IS INDICATED BY DOTTED TICKS OUTSIDE THE NEAT LINE AT 5,000 FOOT INTERVALS  
NOTE: OFFICERS USING THIS MAP WILL MAKE CHECK CORRECTIONS AND ADDITIONS WHICH COME IN THEIR ATTENTION AND WILL DIRECT TO THE CHIEF OF ENGINEERS, WASHINGTON, D. C.

APPROXIMATE MEAN DECLINATION 1943 FOR CENTER OF SHEET  
ANNUAL MAGNETIC CHANGE 1" DECREASE  
Use diagram only to obtain numerical values. To determine magnetic north line, connect the point "M" on the south edge of the map with the value of the angle between GRID NORTH and MAGNETIC NORTH, as plotted on the degree scale at the north edge of the map.

SAWTOOTH RIDGE, CALIF.  
N3537.5-W12000/7.5

