

(SAN MIGUEL
1:62,500)

CALIFORNIA
SAN LUIS OBISPO COUNTY
SHANDON QUADRANGLE
GRID ZONE "G"

WAR DEPARTMENT
CORPS OF ENGINEERS, U. S. ARMY

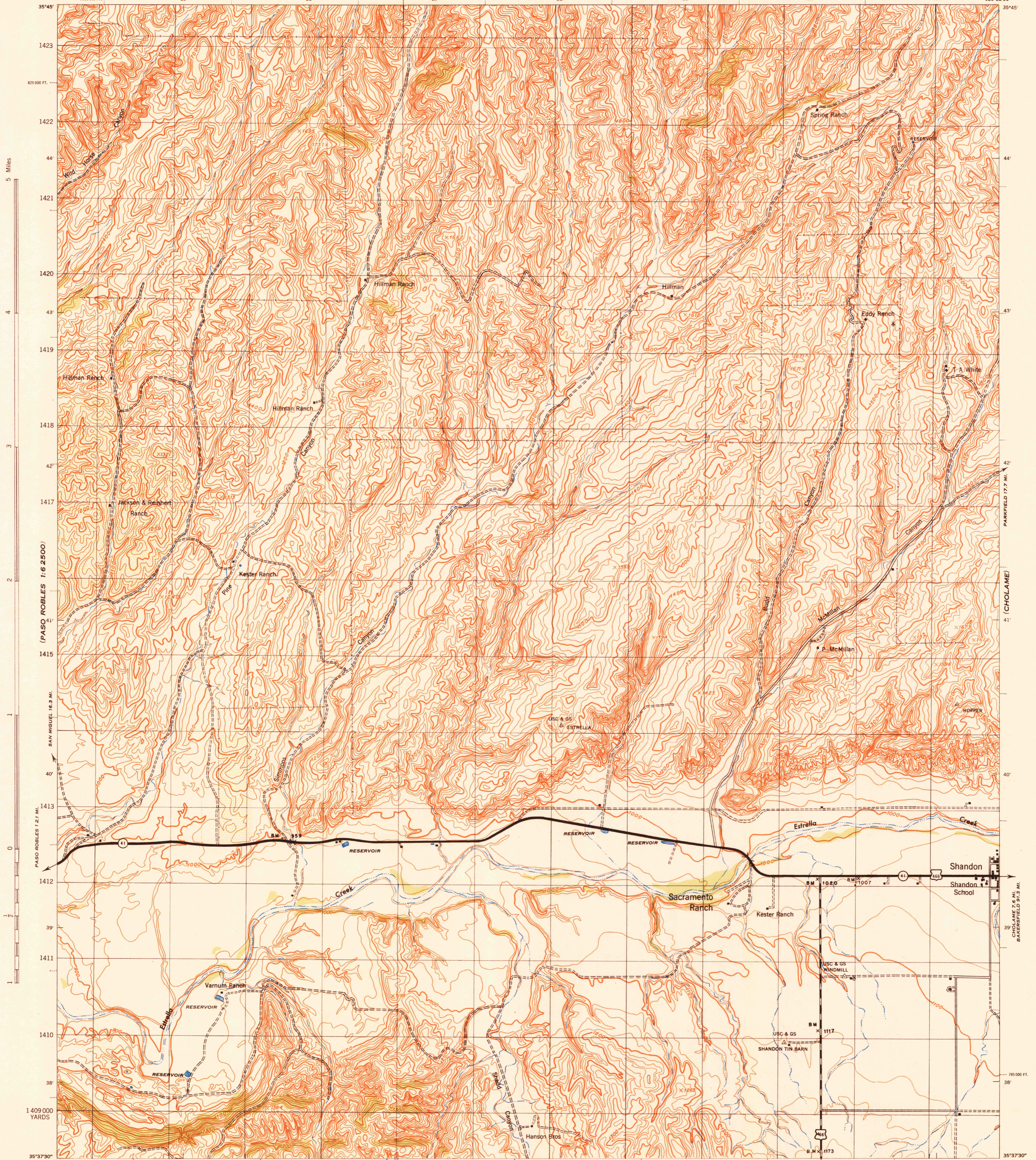
14° 15° 16° 17° 18° 19°

CALIFORNIA
SAN LUIS OBISPO COUNTY
SHANDON QUADRANGLE
GRID ZONE "G"

(CHOLAME HILLS)

FIRST EDITION - AMS 1

GRID ZONE "G"



(PASO ROBLES 1:62,500)

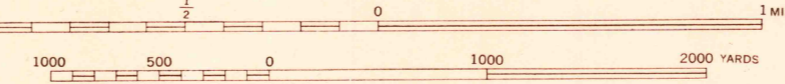
(CHOLAME)

(PASO ROBLES 1:62,500)

(COMMATTI CANYON)

Prepared under the direction of the Chief of Engineers, U. S. Army, 1942.
 Compiled by Fairchild Aerial Surveys, Inc., Los Angeles, California.
 Topography by Fairchild Aerial Surveys, Inc., Los Angeles, California,
 by stereophotogrammetric process.
 Control by U. S. Coast and Geodetic Survey
 and Fairchild Aerial Surveys, Inc.
 Aerial photography by Fairchild Aerial Surveys, Inc.
 Polyconic Projection, North American Datum 1927.

Scale 1:31,680



CONTOUR INTERVAL 25 FEET
DATUM IS MEAN SEA LEVEL

ONE THOUSAND YARD GRID COMPUTED FROM "GRID SYSTEM FOR PROGRESSIVE MAPS
 IN THE U. S. ARMY" (U. S. G. O. S. P. 16) SPECIAL PUBLICATION NO. 99
 THE LAST THREE DIGITS OF THE GRID NUMBERS ARE OMITTED.
 CALIFORNIA STATE GRID ZONE 5 IS INDICATED BY DOTTED
 TICKS OUTSIDE THE NEAT LINE AT 5000 FOOT INTERVALS.
 NOTE: OFFICERS USING THIS MAP WILL MARK HEREON CORRECTIONS AND ADDITIONS WHICH COME
 TO THEIR ATTENTION AND MAIL DIRECT TO THE CHIEF OF ENGINEERS, WASHINGTON, D. C.



ROAD CLASSIFICATION 1943

Dependable hard-surface, heavy-duty road. U. S. Route 160

Loose-surface graded, dry weather road.

Secondary, hard-surface, all-weather road. State Route 30

Dirt road.

More than two lanes indicated by note along road with tick at point of change. 3 LANE | 4 LANE

SHANDON, CALIF.
N5357.5-W12022.5/7.5

USGS
HISTORICAL FILE
GEOGRAPHIC DIVISION