

CALIFORNIA  
SAN LUIS OBISPO COUNTY  
SHEDD CANYON QUADRANGLE  
GRID ZONE "G"

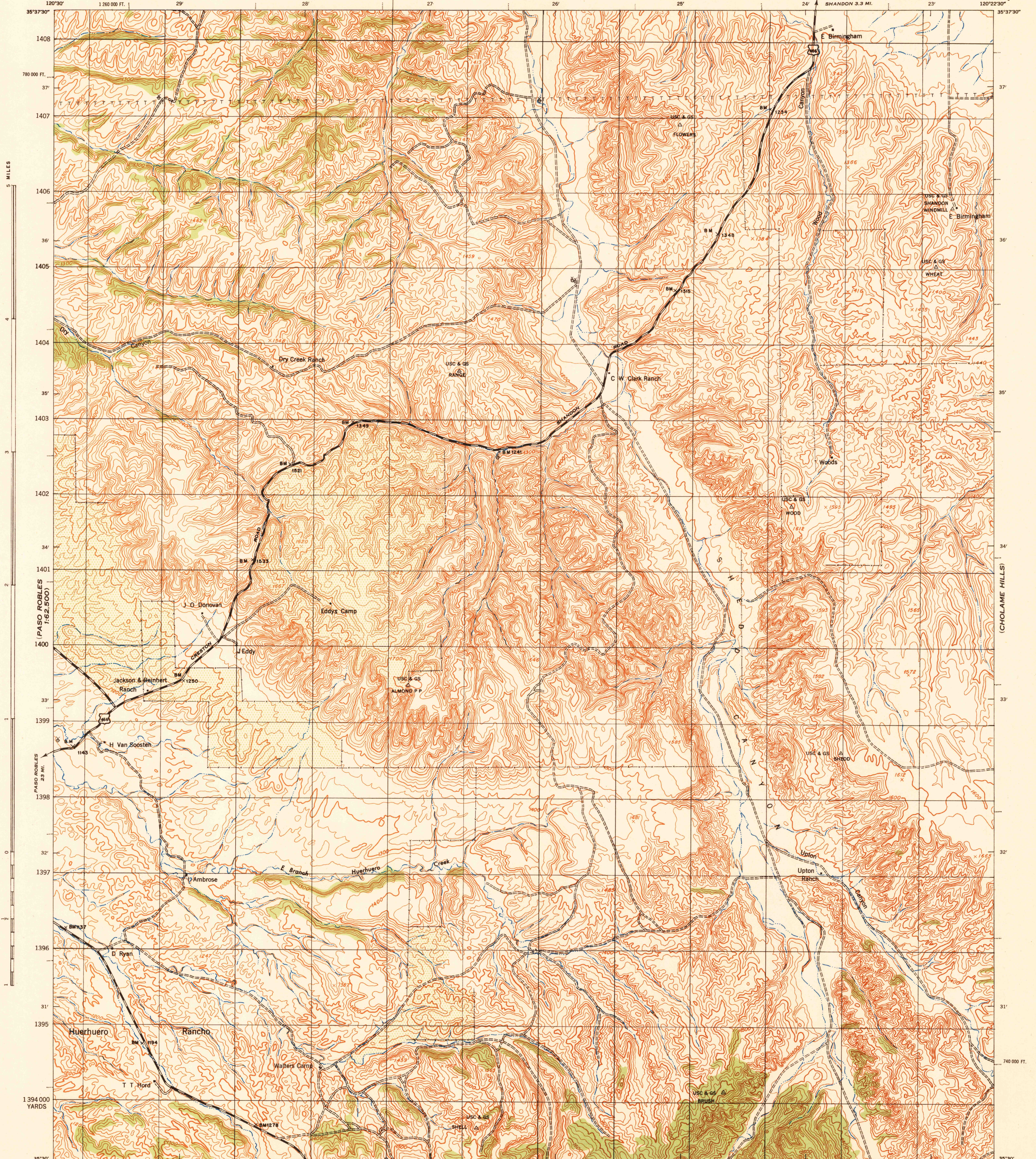
WAR DEPARTMENT  
CORPS OF ENGINEERS, U. S. ARMY  
(SHANDON)

CALIFORNIA  
SAN LUIS OBISPO COUNTY  
SHEDD CANYON QUADRANGLE  
GRID ZONE "G"

14° 15° 16° 17° 18° 19°  
FIRST EDITION-AMS 1

(PASO ROBLES  
1:62,500)

(CHOLAME  
1:62,500)



120°30' 1050 000 YARDS  
First Edition 1943  
Prepared under the direction of the Chief of Engineers, U. S. Army, 1942.  
Compiled by Fairchild Aerial Surveys, Inc., Los Angeles, California.  
Topography by Fairchild Aerial Surveys, Inc., Los Angeles, California  
by stereophotogrammetric process.  
Control by U. S. Coast and Geodetic Survey  
and Fairchild Aerial Surveys, Inc.  
Aerial photography by Fairchild Aerial Surveys, Inc.  
Polyconic Projection, North American Datum 1927.

Scale 1:31,680  
1 000 500 0 1000 2000 YARDS  
CONTOUR INTERVAL 25 FEET  
DATUM IS MEAN SEA LEVEL  
ONE THOUSAND YARD GRID COMPUTED FROM 'GRID SYSTEM FOR PROGRESSIVE MAPS  
IN THE U. S. ZONE G, U. S. C. & G. S. SPECIAL PUBLICATION NO. 59  
THE LAST THREE DIGITS OF THE GRID NUMBERS ARE OMITTED  
CALIFORNIA STATE GRID ZONE 5 IS INDICATED BY DOTTED  
TICKS OUTSIDE THE NEAT LINE AT 5,000 FOOT INTERVALS  
NOTE: OFFICERS USING THIS MAP WILL MARK HEREON CORRECTIONS AND ADDITIONS WHICH COME  
TO THEIR ATTENTION AND MAIL DIRECT TO THE CHIEF OF ENGINEERS, WASHINGTON, D. C.

APPROXIMATE MEAN DECLINATION 1943  
FOR CENTER OF SHEET  
ANNUAL MAGNETIC CHANGE (INCREASE OR DECREASE)  
Use diagram only to obtain numerical values. To determine  
magnetic north line, connect the point "M" on the  
south edge of the map with the value of the angle between  
GRID NORTH and MAGNETIC NORTH, as plotted on the  
degree scale of the north edge of the map.

ROAD CLASSIFICATION 1943  
Dependable hard-surface, heavy-duty road. U. S. Route 160  
Loose-surface graded, dry weather road.  
Secondary, hard-surface, all-weather road.  
Dirt road.  
Slate Route 30  
More than two lanes indicated by note along road with tick at point of change. 3 LANE 1 & 2 LANE

USGS  
Historical File  
Topographic Division

U. S. G. S.  
FILE COPY  
Inspection and Editing

SHEDD CANYON, CALIF.  
N3530-W12022.5/7.5