

TUMEY HILLS, CALIF.

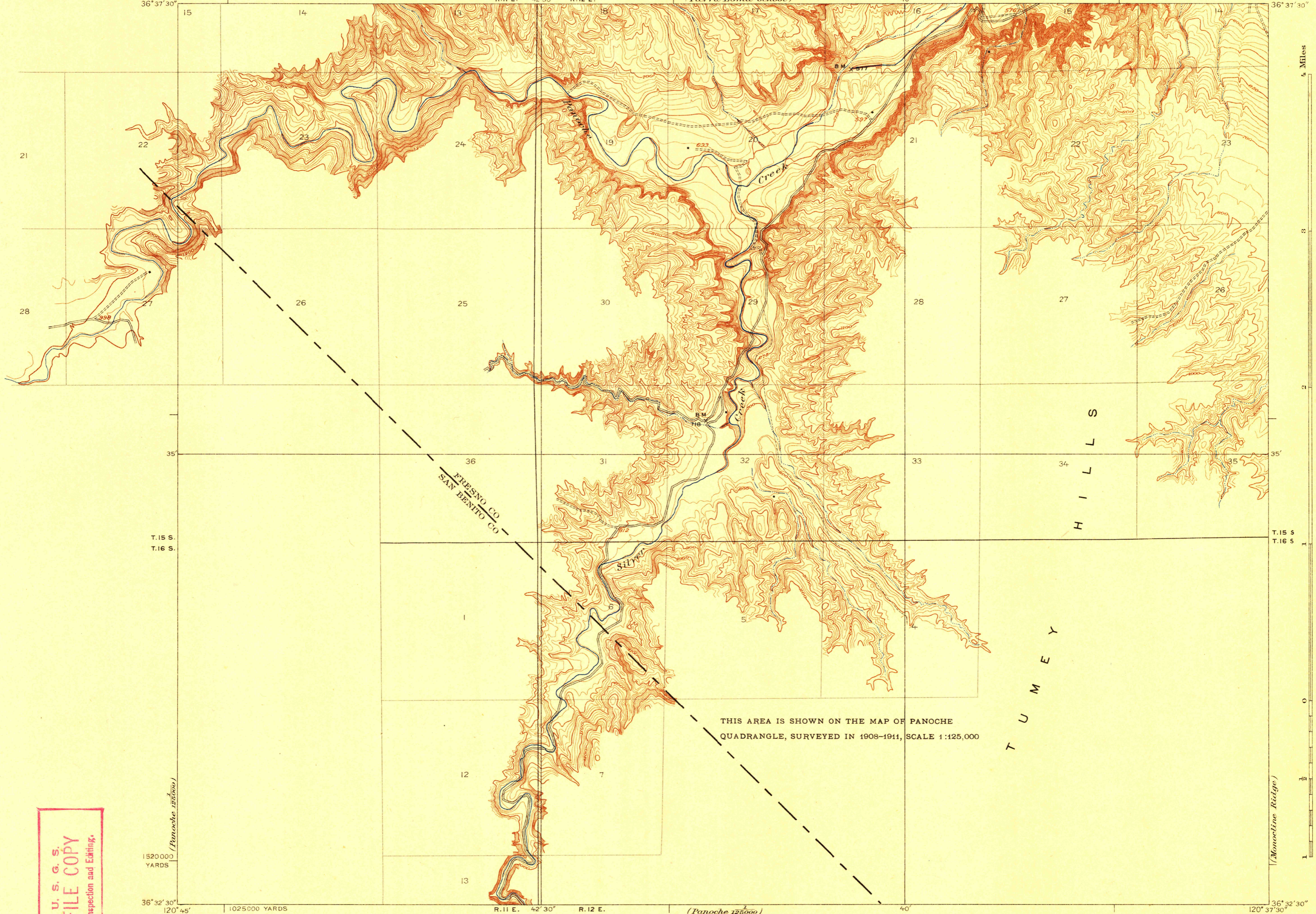
DEPARTMENT OF THE INTERIOR
U.S. GEOLOGICAL SURVEY

STATE OF CALIFORNIA
WILLIAM D STEPHENS, GOVERNOR.
W. F. MCCLURE, STATE ENGINEER
(Tierra Loma School)

CALIFORNIA
TUMEY HILLS QUADRANGLE

(Chaney Ranch)

TUMEY HILLS

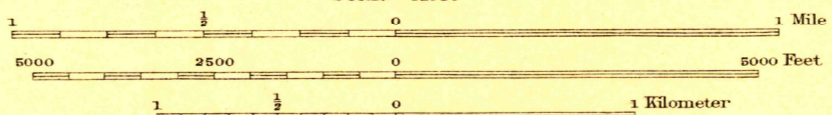
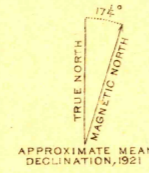


THIS AREA IS SHOWN ON THE MAP OF PANOCHÉ
QUADRANGLE, SURVEYED IN 1908-1911, SCALE 1:125,000

U. S. G. S.
FILE COPY
Inspection and Editing.

U. S. G. S.
FILE COPY
Inspection and Editing.

Topography by R.A. Kiger.
Surveyed in 1921.



Contour interval 5 feet and 25 feet
changing on the 700 foot contour.
Datum is mean sea level.

USGS
Historical File
Topographic Division

Polyconic projection, North American datum.
5000 yard grid based upon U.S. zone system, G.

MAR 7 - 1924 565 Edition of 1924.

Tumey Hills