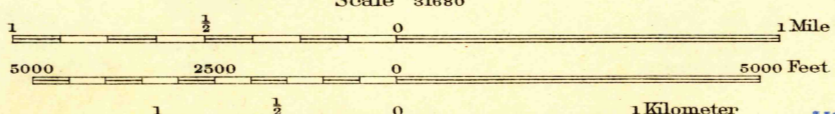


Vertical scale bar on the right side of the map, labeled 'Miles' at the top and '0', '1', '2', '3', '4', '5' along the scale.

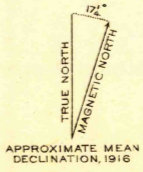
W.H. Herron, Acting Chief Geographer.  
Geo. R. Davis, Geographer in charge.  
Topography by R.T. Evans and C.A. Ecklund.  
Control by Corps of Engineers U.S. Army,  
C.L. Nelson, and D.S. Birkett.  
Surveyed in 1916.

Ecklund  
Evans



Contour interval 5 feet.  
Datum is mean sea level.

USGS  
Historical File  
Topographic Division



Polyconic projection, North American datum  
Edition of 1918, reprinted 1943

CALIF.  
TURNER RANCH

N3707.5-W12037.5/7.5

JUL 5 - 1943

U. S. G. S.  
**FILE COPY**  
Inspection and Editing.

2110