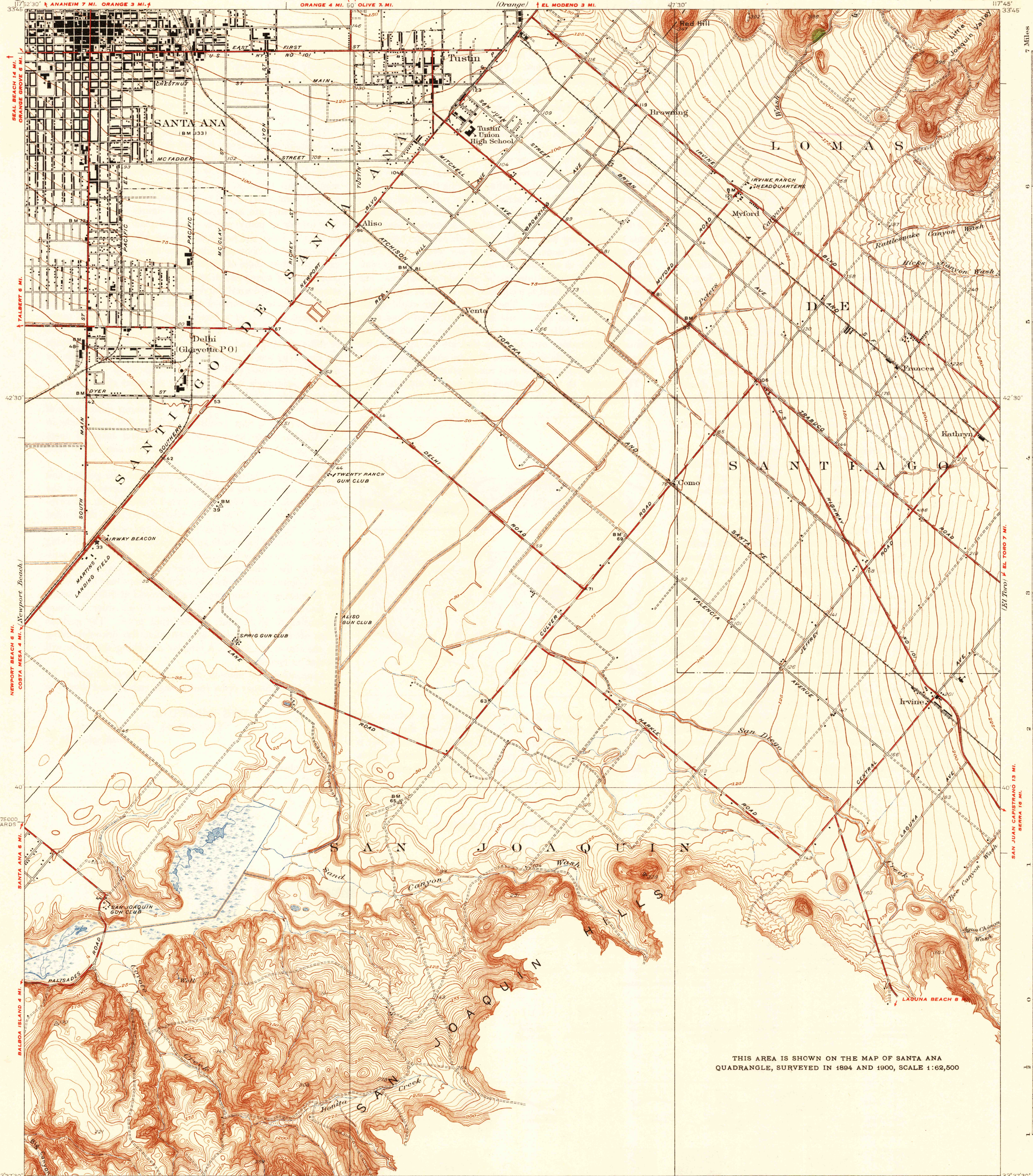


DEPARTMENT OF THE INTERIOR
U.S. GEOLOGICAL SURVEY

STATE OF CALIFORNIA
FRANK F. MERRIAM, GOVERNOR
EARL LEE KELLY, DIRECTOR OF PUBLIC WORKS
EDWARD HYATT, STATE ENGINEER

CALIFORNIA
(ORANGE COUNTY)
TUSTIN QUADRANGLE



THIS AREA IS SHOWN ON THE MAP OF SANTA ANA
QUADRANGLE, SURVEYED IN 1894 AND 1900, SCALE 1:62,500

USGS
Historical File
Topographic Division

Polyconic projection, 1927 North American datum
5000 yard grid based upon U.S. zone system G

THROUGH ROUTES
OTHER MAIN TRAVELED ROADS
1934

TUSTIN, CALIF.
Edition of 1935
1651:4625; /49;



Contour interval 5 feet
Datum is mean sea level

APPROXIMATE MEAN
DECLINATION, 1932

Topography by R.R. Menbeck and W.B. Upton, Jr.
Control by U.S. Geological Survey and
U.S. Coast and Geodetic Survey
Surveyed in 1932