

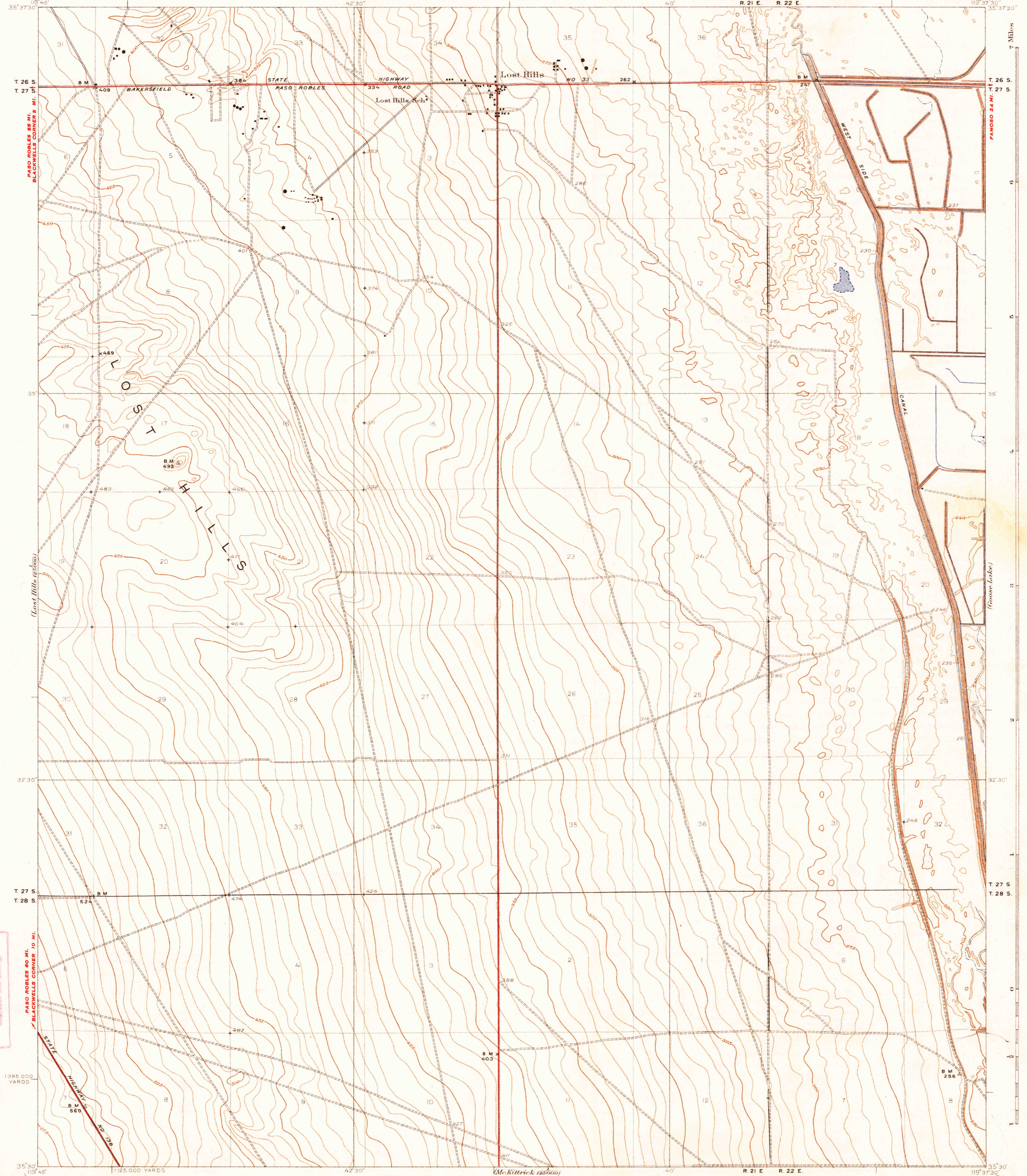
Lewis Stiles

U.S.G.S. FILE COPY Inspection and Editing

STATE OF CALIFORNIA
JAMES ROLPH, JR. GOVERNOR
EARL LEE KELLY, DIRECTOR OF PUBLIC WORKS
EDWARD HYATT, STATE ENGINEER

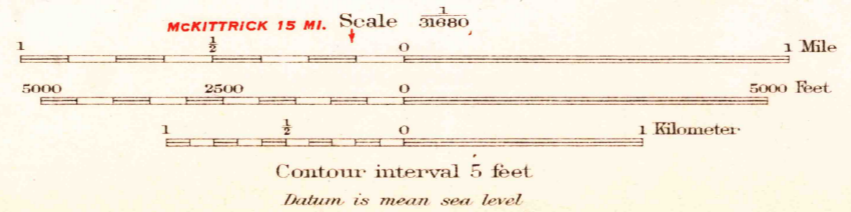
DEPARTMENT OF THE INTERIOR
U.S. GEOLOGICAL SURVEY

CALIFORNIA
(KERN COUNTY)
WEST OF GOOSE LAKE QUADRANGLE



U.S.G.S. FILE COPY Inspection and Editing

Topography by R.G. Stevenson
Control by U.S. Geological Survey
Surveyed in 1932



USGS G.S. Historical File Topographic Division Inspection and Editing

Polyconic projection, North American datum
5000 yard grid based upon U.S. zone system, G

HARD IMPERVIOUSLY SURFACED ROADS
OTHER MAIN TRAVELED ROADS
1934

WEST OF GOOSE LAKE, CALIF.
Edition of 1934
Name changed to Lost Hills
1652:0850/174

SEP 24 1934 (2415) 215