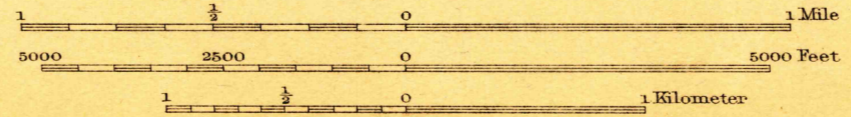
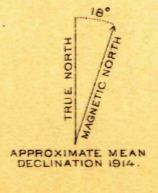


ENGRAVED 1916 BY U.S.G.S.
R. B. Marshall, Chief Geographer.
Geo. R. Davis, Geographer in charge.
Topography by A. J. Ogle and J. B. Leavitt.
Control by C. L. Nelson, D. S. Birkett, and C. H. Semper.
Surveyed in 1914.

Ogle
Leavitt



Contour interval 5 feet.
Datum is mean sea level.



Edition of 1917.

DEC 8 1 1917 2090

USCS
Historical File
Topographic Division

WINTON, CAL.

U. S. G. S.
FILE COPY